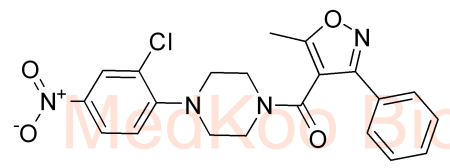


8.236
8.229
8.170
8.164
8.148
8.142
7.627
7.617
7.613
7.544
7.536
7.529
7.208
7.186

3.812
3.391
3.344
3.198
2.892
2.855
2.851
2.844
2.501

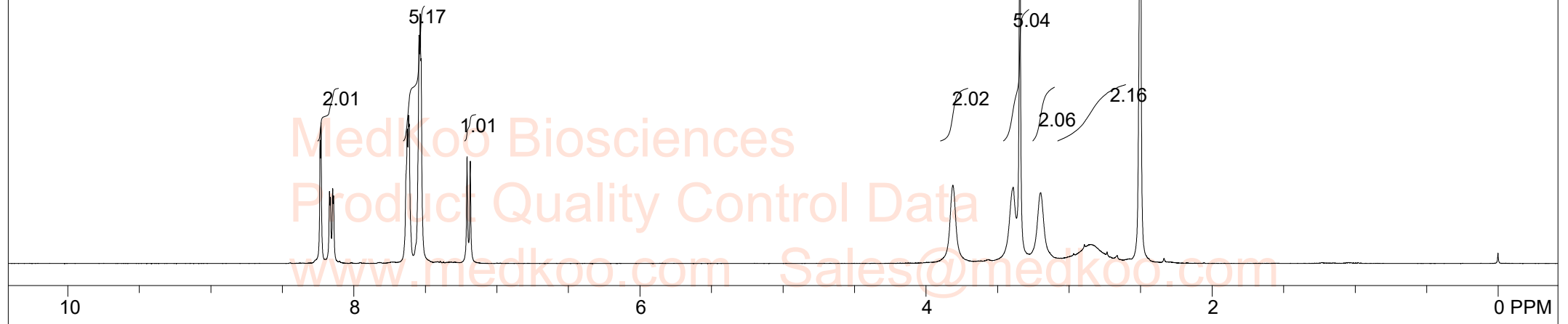
Nucleozin HNMR Analysis, Solvent:DMSO

www.medkoo.com Sales@medkoo.com



MedKoo Cat#: 326797
 Name: Nucleozin
 CAS#: 341001-38-5
 Lot#: T21D06P09
 Chemical Formula: C₂₁H₁₉ClN₄O₄
 Exact Mass: 426.1095
 Molecular Weight: 426.86

www.medkoo.com Sales@medkoo.com

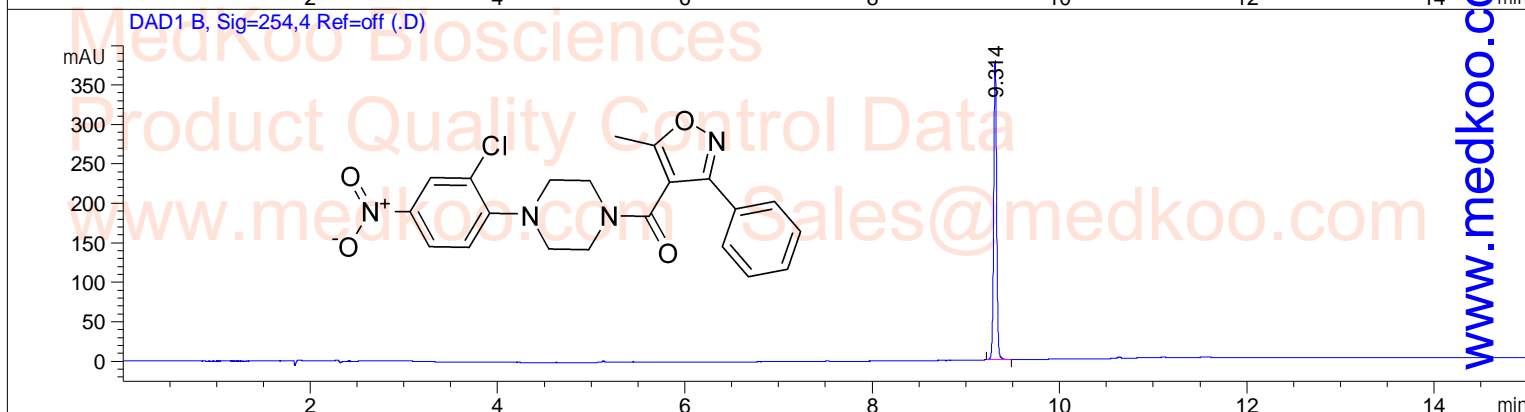
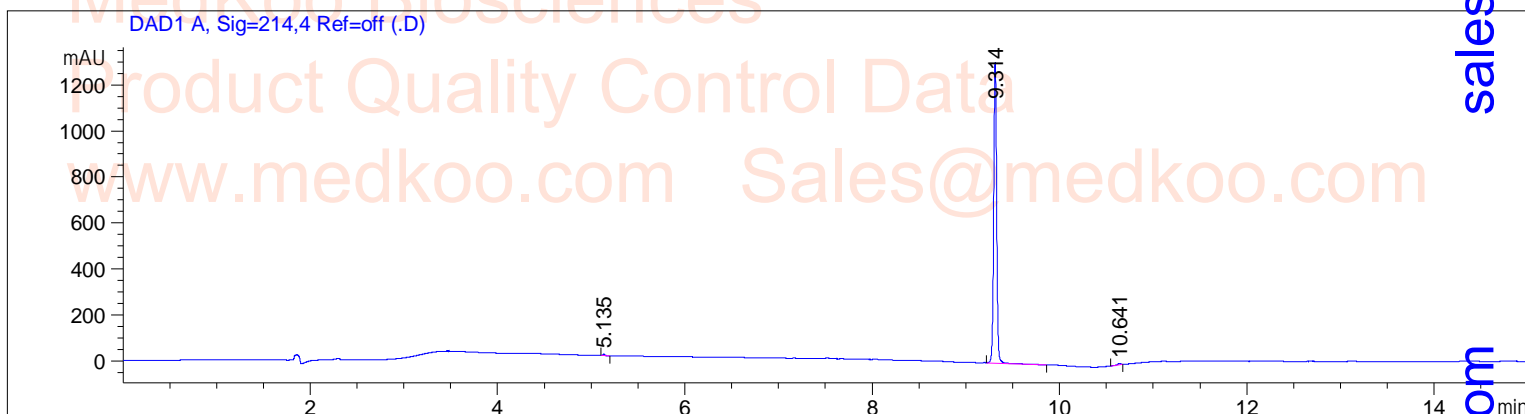


NMRB003, DMSO,							
F1: 400.232	F2: 1.000	SW1: 8224		OF1: 2474.5		PTS1d: 32768	
EX: zg30		PW: 14.0 usec	PD: 1.0 sec	NA: 8	LB: 0.0		Nuts - \$pdata

Nucleozin HPLC Analysis

Acq. Operator :
 Acq. Instrument : HPLC Location : P1-F-07
 Sample Name : Nucleozin Inj Volume : 0.7 µl
 Method : C:\CHEM32\1\METHODS\2-HPLC-15MIN.M
 Method Info : Mobile Phase: A: water(0.05%TFA) B: ACN(0.05%TFA)
 Gradient: 5% increase to 95%B within 8 min, 95%B for 7 min.
 Flow Rate: 1.0ml/min
 Column: Sunfire C18, 4.6*150mm, 3.5µm
 Column Temperature: 40 C

Sample Info : Easy-Access Method: '2-HPLC-15MIN'



Area Percent Report

Signal 1: DAD1 A, Sig=214,4 Ref=off

Peak #	RetTime [min]	Type	Width [min]	Area [mAU*s]	Height [mAU]	Area %
1	5.135	BB	0.0225	9.10022	6.32896	0.3132
2	9.314	BB	0.0337	2880.74683	1308.69922	99.1519
3	10.641	BB	0.0338	15.54058	6.77072	0.5349

Totals : 2905.38763 1321.79890

Signal 2: DAD1 B, Sig=254,4 Ref=off

Peak #	RetTime [min]	Type	Width [min]	Area [mAU*s]	Height [mAU]	Area %
1	9.314	BB	0.0335	828.84875	379.02707	100.0000

Totals : 828.84875 379.02707

MedKoo Cat#: 326797

Name: Nucleozin

CAS#: 341001-38-5

Lot#: T21D06P09

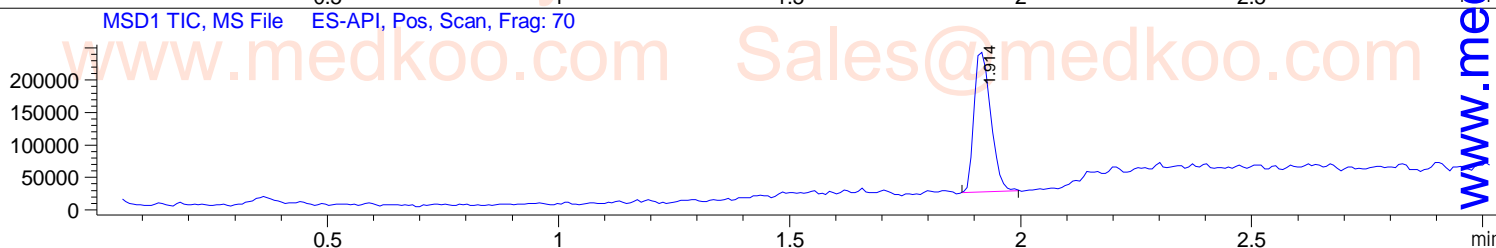
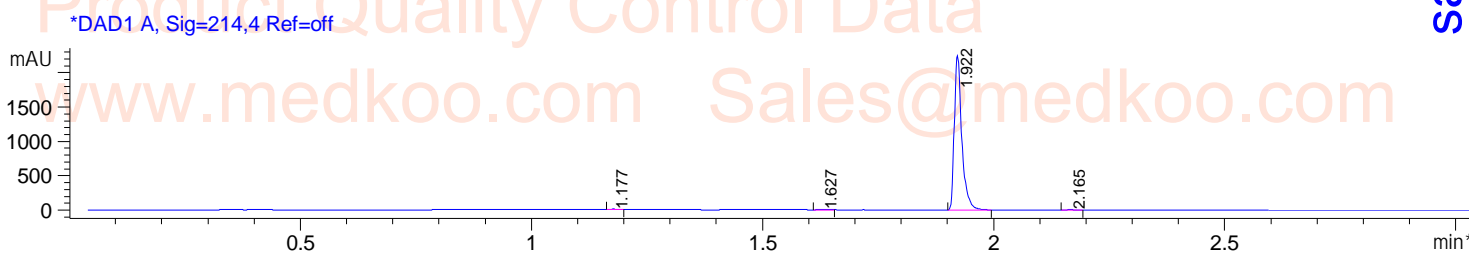
Chemical Formula: C₂₁H₁₉ClN₄O₄

Exact Mass: 426.1095

Molecular Weight: 426.86

Nucleozin LC/MS Analysis

Sample Name : Nucleozin
Acq. Operator :
Spec. Reported : MS Integration
Acq. Method : D:\METHODS\1-POS-3MIN.M
Analysis Method : D:\METHODS\1-POS-3MIN.M
Sample Info : Easy-Access Method: '1-POS-3MIN.M'
Method Info : Mobile Phase: A: water(0.01%TFA) B: ACN(0.01%TFA)
Gradient: 5%B increase to 95%B within 1.3 min, 95%B for 1.7 min.
Flow Rate: 2.0ml/min
Column: Sunfire C18, 4.6*50mm, 3.5um
Column Temperature: 50 C
Detection: UV(214,4nm) and MS(ESI,Pos mode,110 to 1200 amu)



Ret. Time: 1.91 <<<< POSITIVE SPECTRA >>>>

