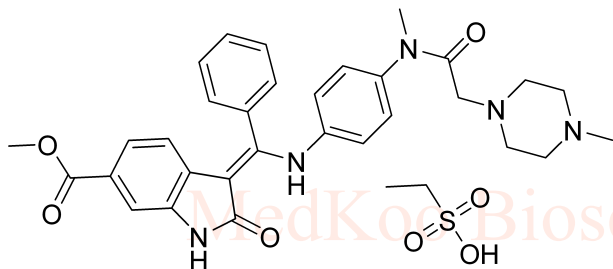
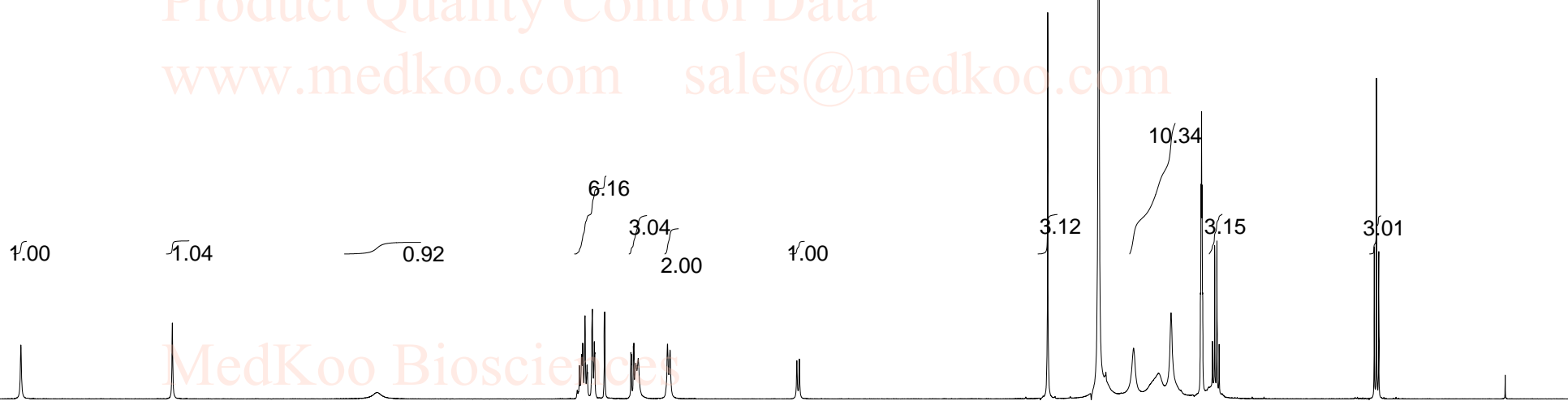


Nintedanib esylate HNMR Analysis, Solvent:DMSO

Product Quality Control Data
 www.medkoo.com sales@medkoo.com



MedKoo Cat#: 100944
 Name: Nintedanib esylate
 CAS#: 656247-18-6 (esylate)
 Lot#: A20T10K26
 Chemical Formula: C33H39N5O7S
 Molecular Weight: 649.76



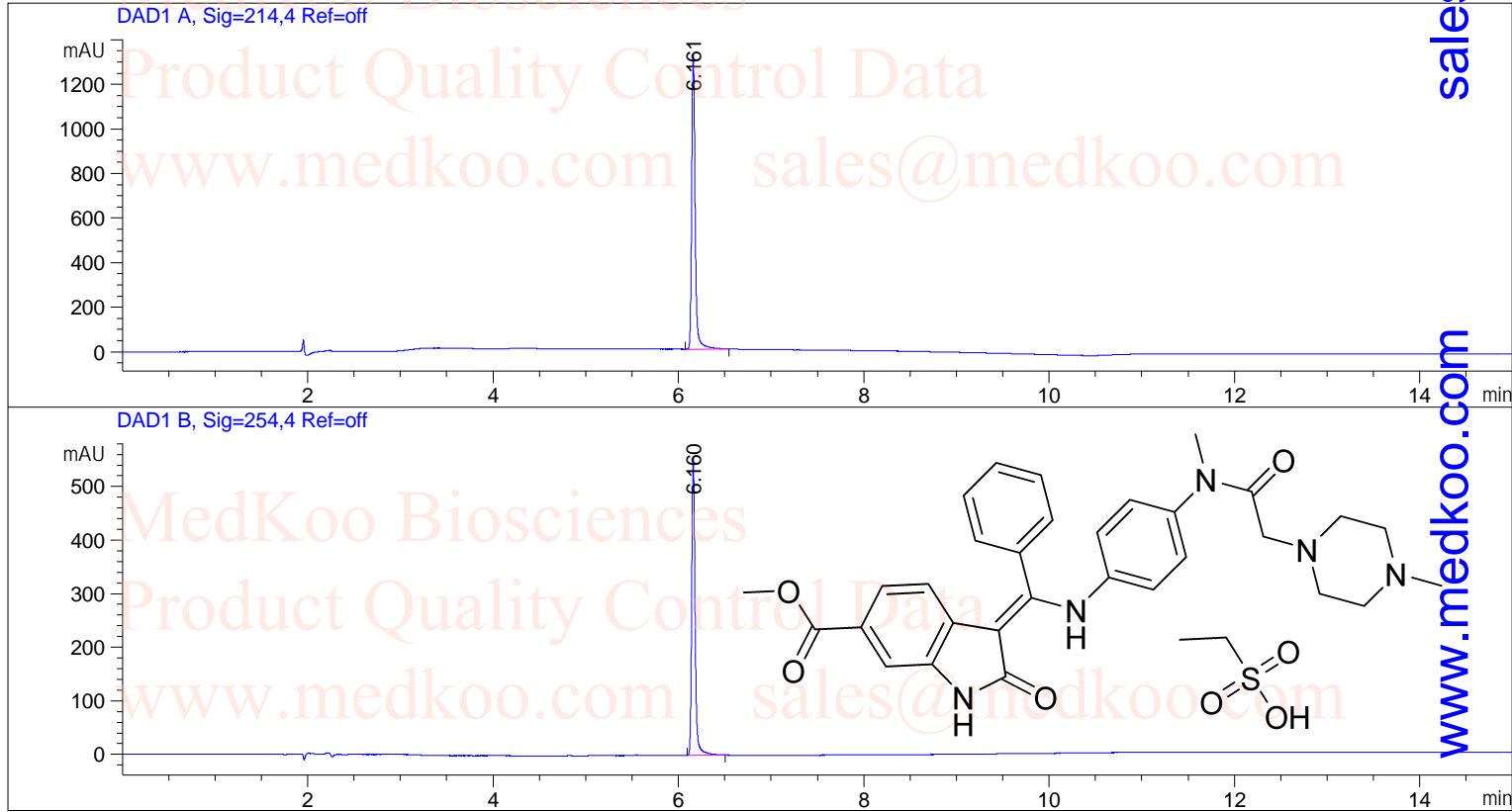
Product Quality Control Data
 www.medkoo.com sales@medkoo.com

Product Quality Control Data
 www.medkoo.com sales@medkoo.com

NMRB003, DMSO,							
F1: 400.232	F2: 1.000	SW1: 8224	OF1: 2474.0	PTS1d: 32768			
EX: zg30	MedKoo Biosciences	PD: 10.00 sec	www.medkoo.com	LB: 0.0	sales@medkoo.com	Nuts - \$pdata	

Nintedanib esylate HPLC Analysis

=====
 Acq. Operator :
 Acq. Instrument : Location : P2-C-03
 Sample Name : 656247-18-6 Inj Volume : 1.0 µl
 Method : C:\CHEM32\1\METHODS\2-HPLC-15MIN.M
 Method Info : Mobile Phase: A: water(0.05%TFA) B: ACN(0.05%TFA)
 Gradient: 5% increase to 95%B within 8 min, 95%B for 7 min.
 Flow Rate: 1.0ml/min
 Column: Luna C18(2), 4.6*150mm, 5µm
 Column Temperature: 40 C
 Sample Info : Easy-Access Method: '2-HPLC-15MIN'



Area Percent Report

Sorted By : Signal
 Multiplier : 1.0000
 Dilution : 1.0000
 Use Multiplier & Dilution Factor with ISTDs
 Signal 1: DAD1 A, Sig=214,4 Ref=off

Peak #	RetTime [min]	Type	Width [min]	Area [mAU*s]	Height [mAU]	Area %
1	6.161	BB	0.0397	3461.72144	1324.40808	100.0000

Totals : 3461.72144 1324.40808

Signal 2: DAD1 B, Sig=254,4 Ref=off

Peak #	RetTime [min]	Type	Width [min]	Area [mAU*s]	Height [mAU]	Area %
1	6.160	BB	0.0392	1424.38721	555.19434	100.0000

Totals : 1424.38721 555.19434

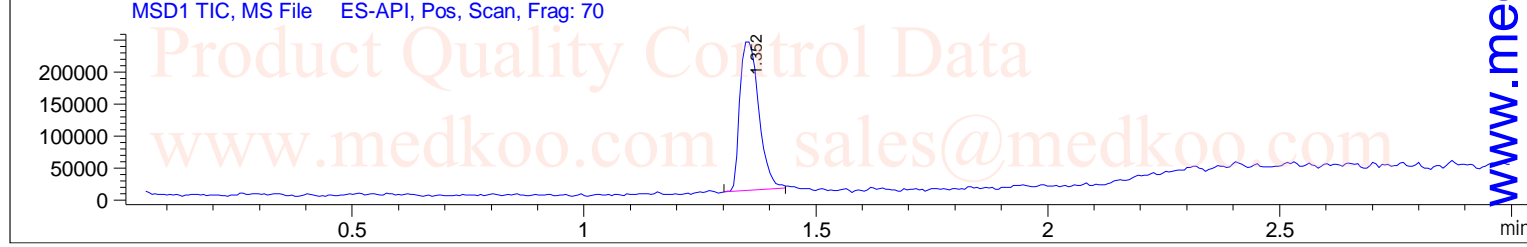
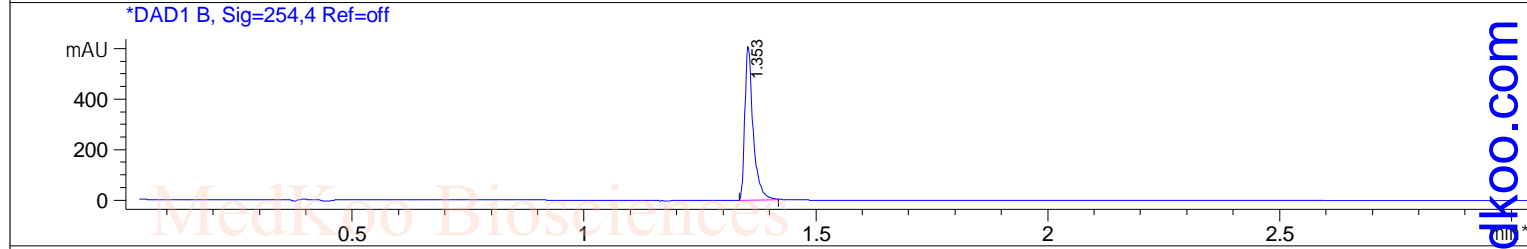
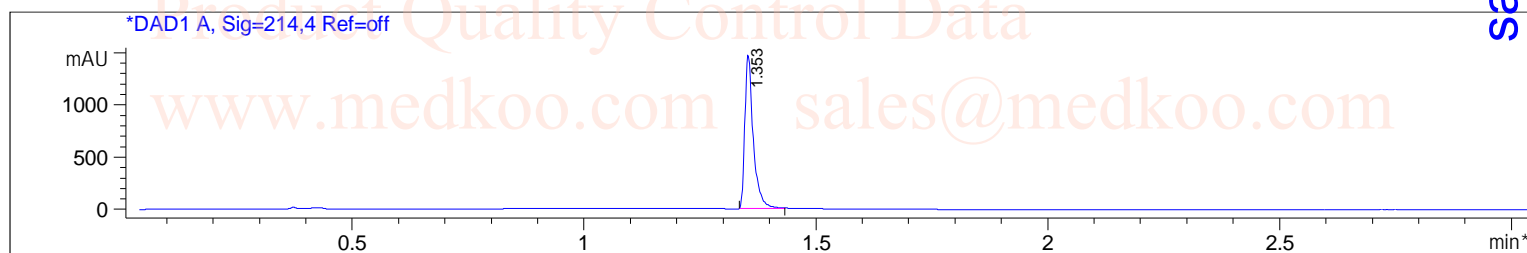
MedKoo Cat#: 100944
 Name: Nintedanib esylate
 CAS#: 656247-18-6 (esylate)
 Lot#: A20T10K26
 Chemical Formula: C33H39N5O7S
 Molecular Weight: 649.76

sales@medkoo.com
 www.medkoo.com
 MedKoo Biosciences

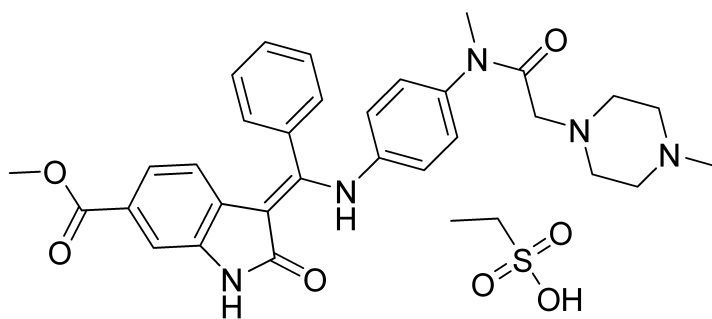
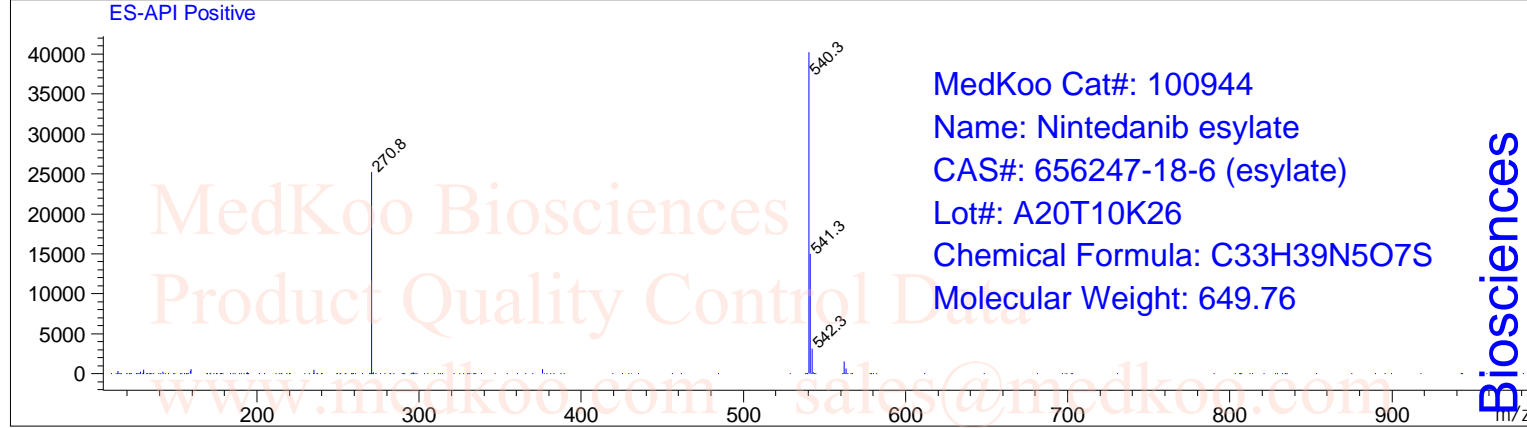
Nintedanib esylate LC/MS Analysis

Sample Name : 656247-18-6
Acq. Operator :
Spec. Reported : MS Integration
Acq. Method : D:\METHODS\1-POS-3MIN.M
Analysis Method : D:\METHODS\1-POS-3MIN.M
Sample Info : Easy-Access Method: '1-POS-3MIN.M'
Method Info : Mobile Phase: A: water(0.01%TFA) B: ACN(0.01%TFA)
Gradient: 5%B increase to 95%B within 1.3 min, 95%B for 1.7 min.
Flow Rate: 2.0ml/min
Column: Sunfire C18, 4.6*50mm, 3.5um
Column Temperature: 50 C
Detection: UV(214,4nm) and MS(ESI, Pos mode, 110 to 1000 amu)

Tgt Mass(EZX) :
Location : P2-B-08
Inj : 1
Inj Volume : 1 ul



Ret. Time: 1.35 <<<< POSITIVE SPECTRA >>>>



sales@medkoo.com

www.medkoo.com

MedKoo Biosciences