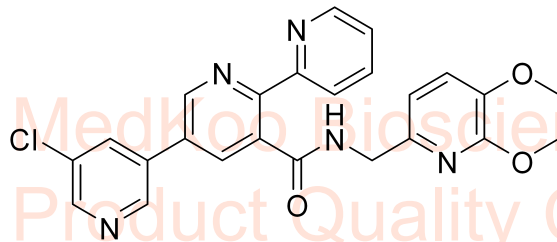


9.159
9.070
9.066
8.905
8.890
8.875
8.735
8.729
8.547
8.540
8.511
8.506
8.501
8.367
8.363
8.090
8.070
7.971
7.952
7.442
7.428
7.350
7.330
7.181
7.161

4.381
4.367
3.842
3.795
3.331
2.505
2.501
2.496

-0.000

MK-1064 HNMR Analysis, Solvent:DMSO



MedKoo Cat#: 530433
Name: MK-1064
CAS#: 1207253-08-4
Lot#: A21T08K15
Chemical Formula: C₂₄H₂₀CIN₅O₃
Exact Mass: 461.1255
Molecular Weight: 461.91

1.00
1.04
0.98
0.97
2.01
0.96
0.93
0.93
0.97
0.95
0.93

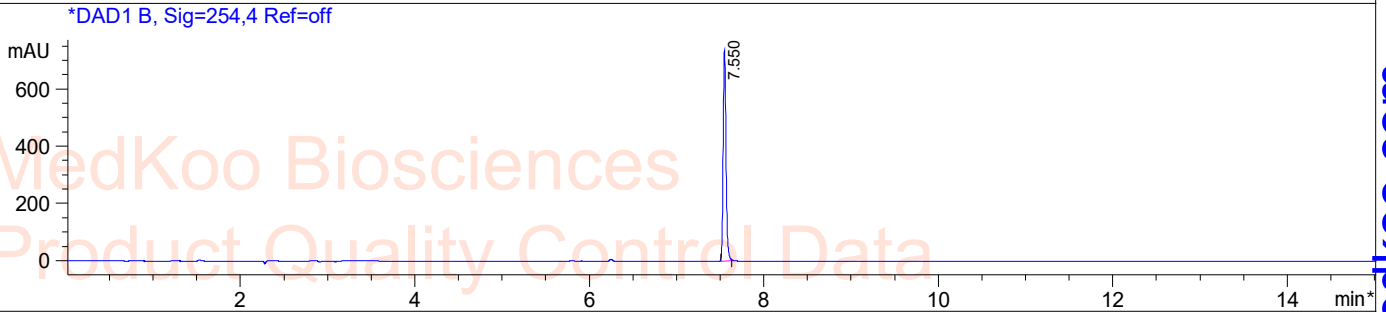
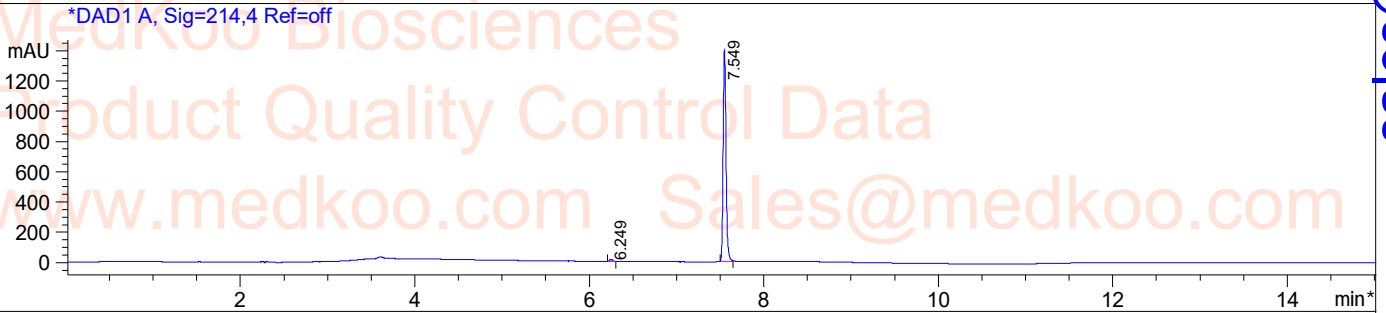
1.94
6.04

10 8 6 4 2 0 PPM

F1: 400.130	F2: 1.000	SW1: 8224	OF1: 2467.8	PTS1d: 65536
EX: zg30	PD: www.medkoo.com	LB: 0.3	sales@medkoo.com	

MK-1064 HPLC Analysis

Sample Name : 1207253-08-4
Method Info : Mobile Phase : A:water(0.01%TFA) B:ACN(0.01%TFA)
Gradient:5%B increase to 95%B within 9min,95%B for 6min
Flow Rate :1ml/min
Column :Sunfire C18 150*4.6mm,3.5um
Column Temperature:45C
Detection:UV(214nm,4nm) and MS(ESI,POS Mode,110-1300amu)

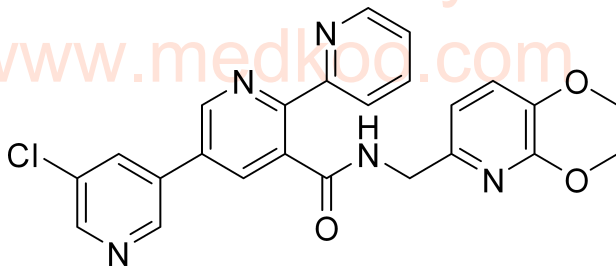


Integration Results for DAD1 A, Sig=214,4 Ref=off

RetTim	Width	Area	Height	Area%
6.25	0.04	34.12	14.50	1.05
7.55	0.04	3209.86	1395.94	98.95

Integration Results for DAD1 B, Sig=254,4 Ref=off

RetTim	Width	Area	Height	Area%
7.55	0.04	1675.43	737.05	100.00



MedKoo Cat#: 530433

Name: MK-1064

CAS#: 1207253-08-4

Lot#: A21T08K15

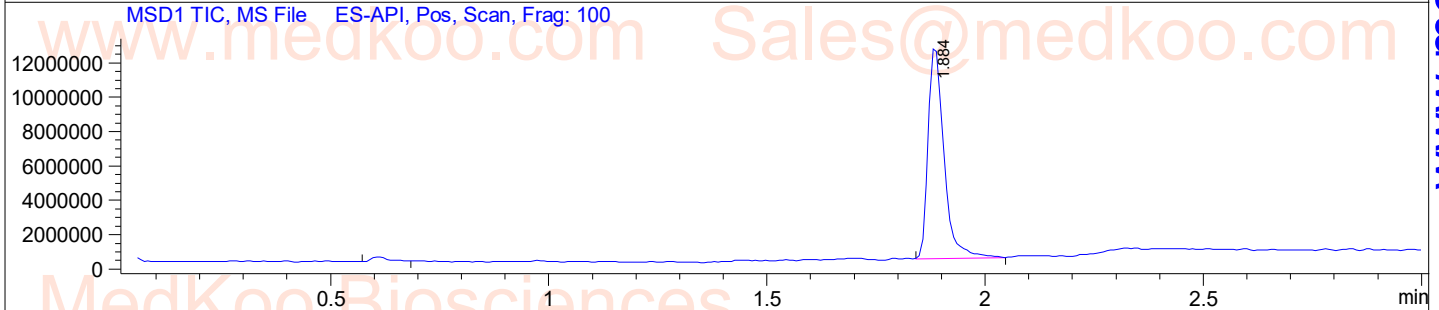
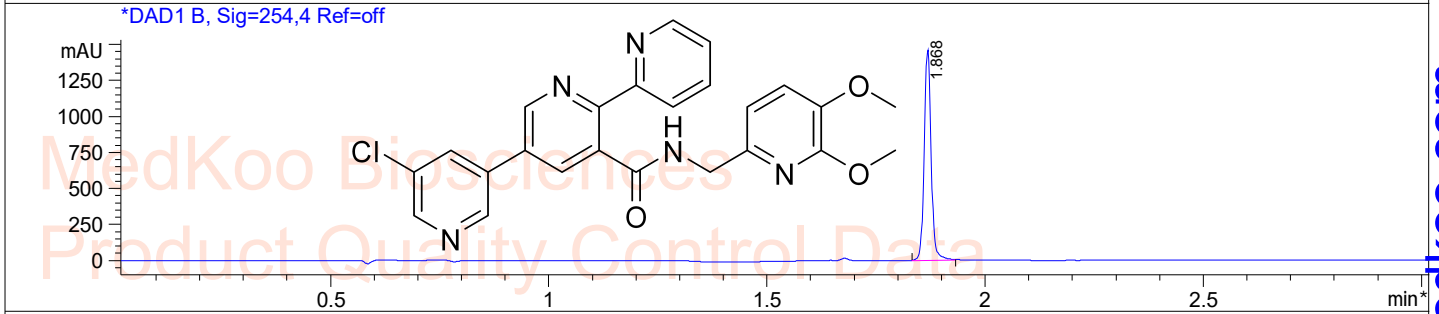
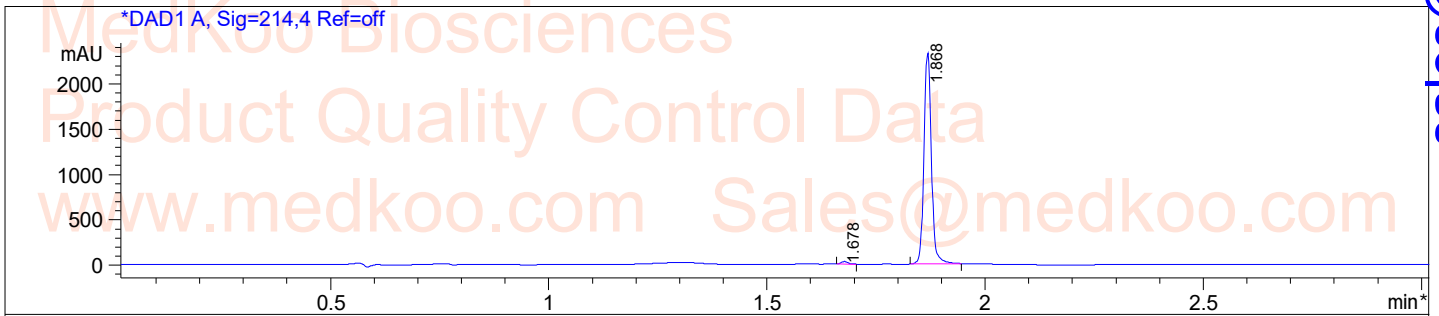
Chemical Formula: C₂₄H₂₀CIN₅O₃

Exact Mass: 461.1255

Molecular Weight: 461.91

MK-1064 LC/MS Analysis

Sample Name : 1207253-08-4
Method Info : Mobile Phase : A:water(0.01%TFA) B:ACN(0.01%TFA)
Gradient:5%B increase to 95%B within 1.5min,95%B for 1.5min
Flow Rate :2.0ml/min
Column :SunFire C18 3.5um, 4.6mm*50mm
Column Temperature:50C
Detection:UV(214nm,4nm) and MS(ESI,POS Mode,110-1300amu)



Ret.Time: 1.88

<<<< POSITIVE SPECTRA >>>>

