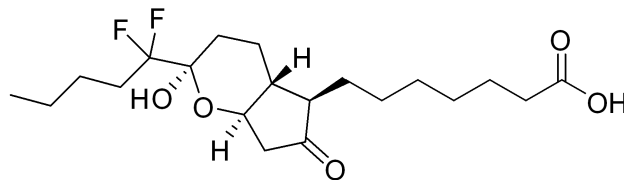
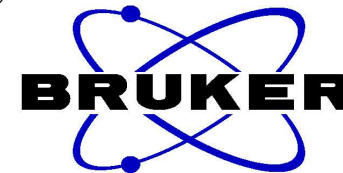


7.284
4.212
4.196
2.628
2.610
2.584
2.566
2.389
2.370
2.351
2.309
2.281
2.265
2.236
2.044
2.028
2.008
1.988
1.950
1.909
1.888
1.873
1.856
1.841
1.827
1.804
1.686
1.669
1.651
1.634
1.611
1.592
1.573
1.553
1.533
1.446
1.428
1.409
1.390
1.372
1.345
0.979
0.960
0.942

Lubiprostone HNMR, solvent: CDCl3



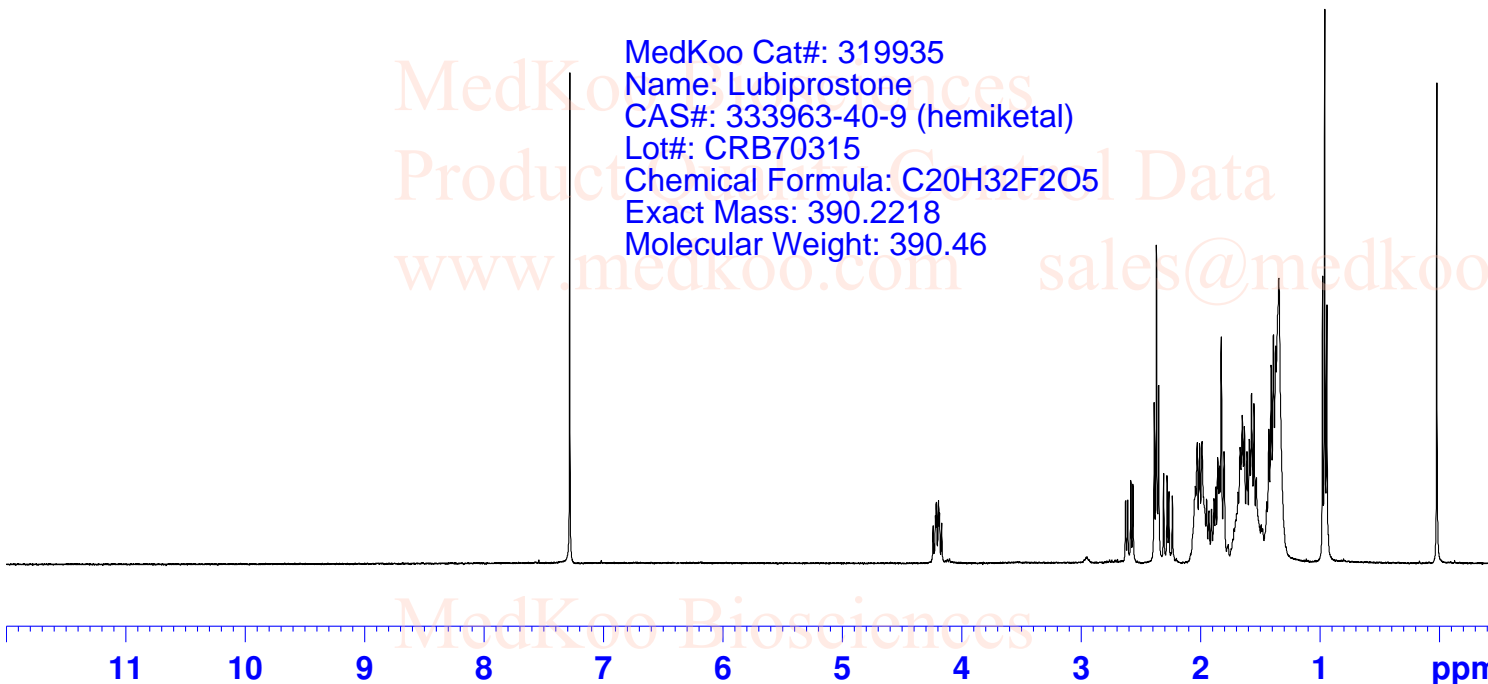
```

NAME Lubiprostone
EXPNO 1
PROCNO 1
INSTRUM spect
PROBHD 5 mm PABBO
PULPROG BB-zg30
TD 65536
SOLVENT CDCl3
NS 8
DS 0
SWH 8223.685 Hz
FIDRES 0.125483 Hz
AQ 3.9846387 sec
RG 287
DW 60.800 usec
DE 6.50 usec
TE 297.5 K
D1 1.00000000 sec
TD0 1
  
```

MedKoo Cat#: 319935
 Name: Lubiprostone
 CAS#: 333963-40-9 (hemiketal)
 Lot#: CRB70315
 Chemical Formula: C₂₀H₃₂F₂O₅
 Exact Mass: 390.2218
 Molecular Weight: 390.46

```

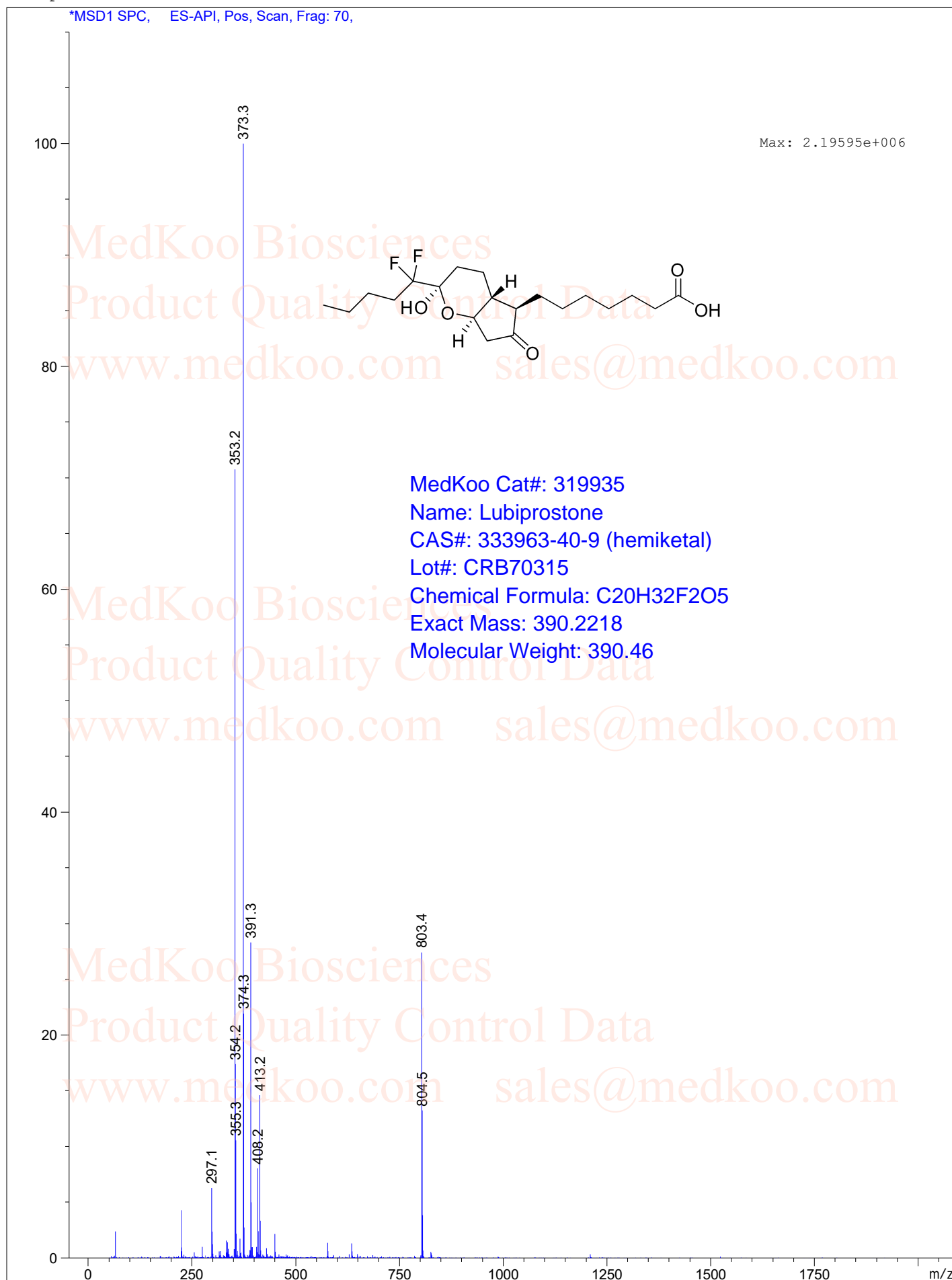
===== CHANNEL f1 =====
NUC1 1H
P1 10.85 usec
PL1 -4.00 dB
PL1W 20.19063568 W
SFO1 400.1324710 MHz
SI 32768
SF 400.1300000 MHz
WDW EM
SSB 0
LB 0.30 Hz
GB 0
PC 1.00
  
```



Lubiprostone MS Analysis

MS Spectrum

*MSD1 SPC, ES-API, Pos, Scan, Frag: 70,



MedKoo Cat#: 319935
Name: Lubiprostone
CAS#: 333963-40-9 (hemiketal)
Lot#: CRB70315
Chemical Formula: C₂₀H₃₂F₂O₅
Exact Mass: 390.2218
Molecular Weight: 390.46

sales@medkoo.com

www.medkoo.com

MedKoo Biosciences