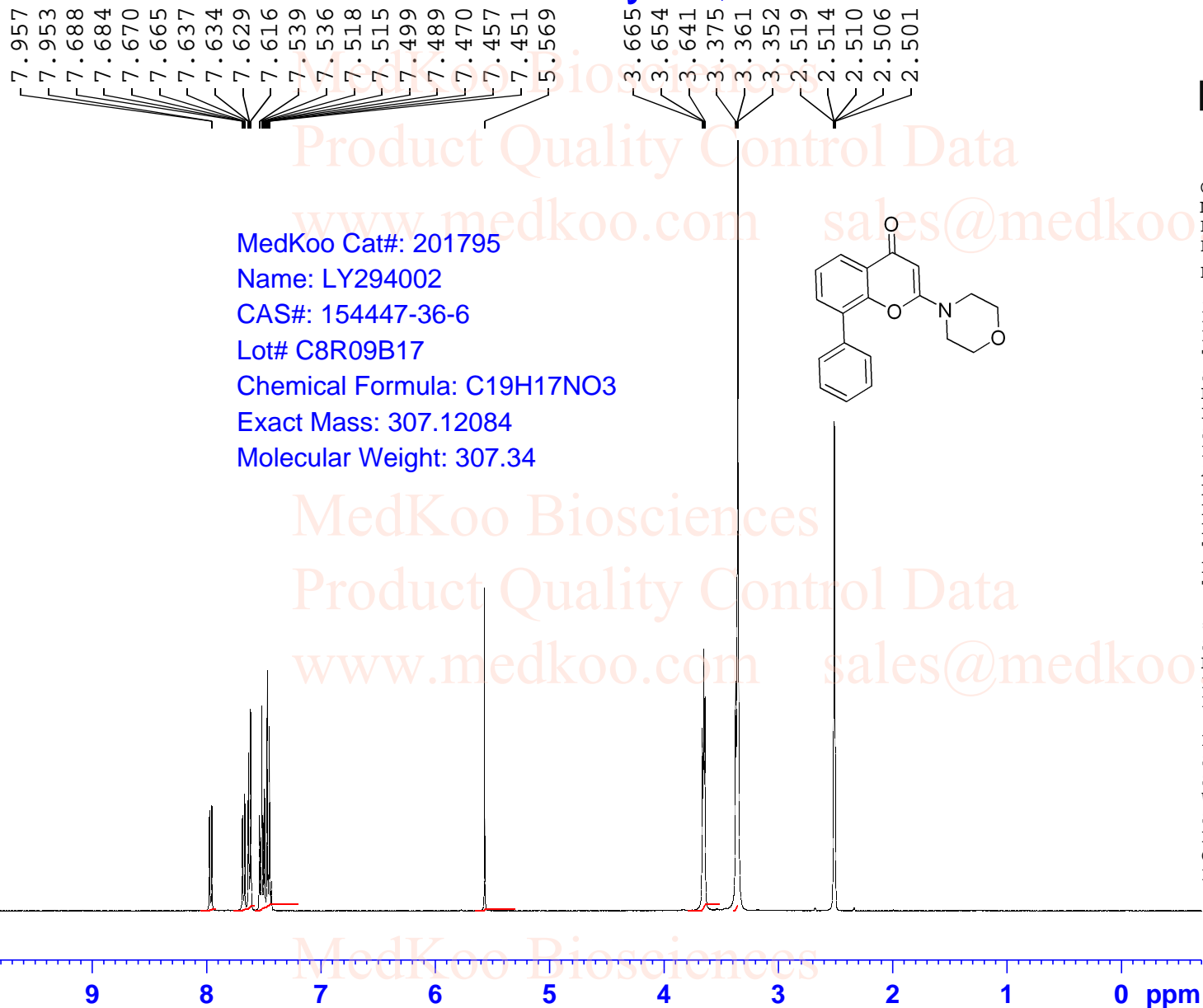


LY294002 HNMR Analysis, solvent = DMSO-d6



MedKoo Cat#: 201795
 Name: LY294002
 CAS#: 154447-36-6
 Lot# C8R09B17
 Chemical Formula: C19H17NO3
 Exact Mass: 307.12084
 Molecular Weight: 307.34



Current Data Parameters
 NAME LY4002
 EXPNO 1
 PROCNO 1
 F2 - Acquisition Parameters
 INSTRUM spect
 PROBHD 5 mm PADUL 13C
 PULPROG zg30
 TD 65536
 SOLVENT DMSO
 NS 8
 DS 2
 SWH 8012.820 Hz
 FIDRES 0.122266 Hz
 AQ 4.0894465 sec
 RG 187.16
 DW 62.400 usec
 DE 6.50 usec
 TE 296.5 K
 D1 1.00000000 sec
 TD0 1
 ===== CHANNEL f1 =====
 SFO1 400.1324710 MHz
 NUC1 1H
 P1 10.00 usec
 PLW1 20.00000000 W
 F2 - Processing parameters
 SI 65536
 SF 400.1300000 MHz
 WDW EM
 SSB 0
 LB 0.30 Hz
 GB 0
 PC 1.00

LY294002 HPLC Analysis

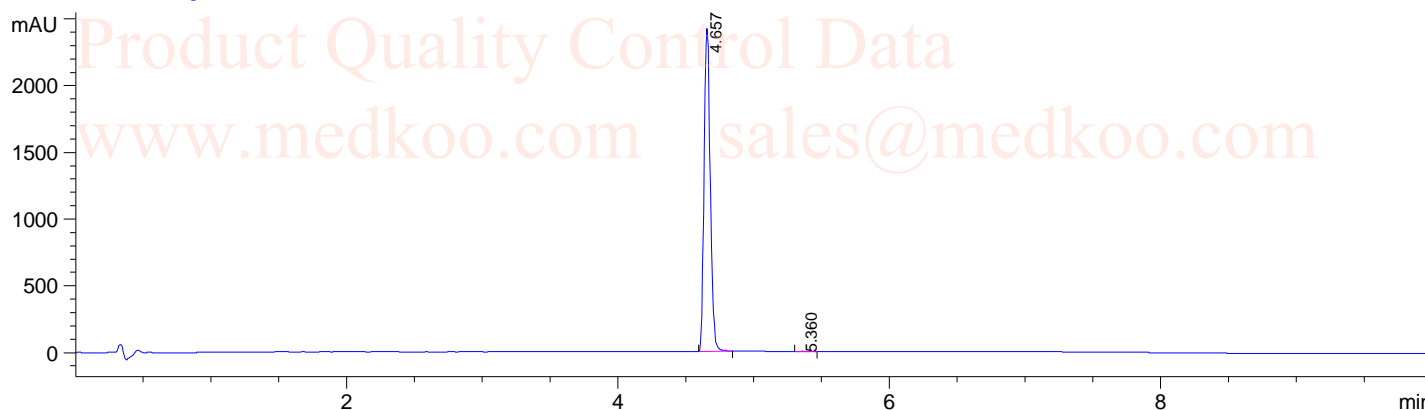
Sample Name : LY4002
Acq. Operator : 1
Spec. Reported : Integration

Tgt Mass(EZX) :
Location : P1-E-07
Inj : 0
Inj Volume : 9 ul

MedKoo Biosciences

Product Quality Control Data

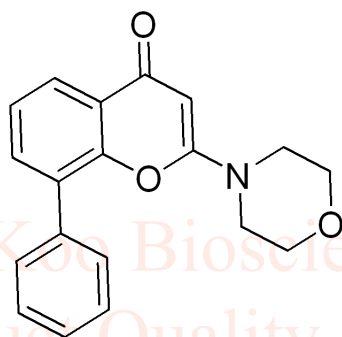
www.medkoo.com sales@medkoo.com



Integration Results for DAD1 A, Sig=214,4 Ref=off

RetTim	Width	Area	Height	Area%
4.66	0.05	7744.87	2417.70	99.90
5.36	0.10	7.90	1.33	0.10

www.medkoo.com sales@medkoo.com



MedKoo Cat#: 201795
Name: LY294002
CAS#: 154447-36-6
Lot# C8R09B17
Chemical Formula: C₁₉H₁₇NO₃
Exact Mass: 307.12084
Molecular Weight: 307.34

MedKoo Biosciences

Product Quality Control Data

www.medkoo.com sales@medkoo.com

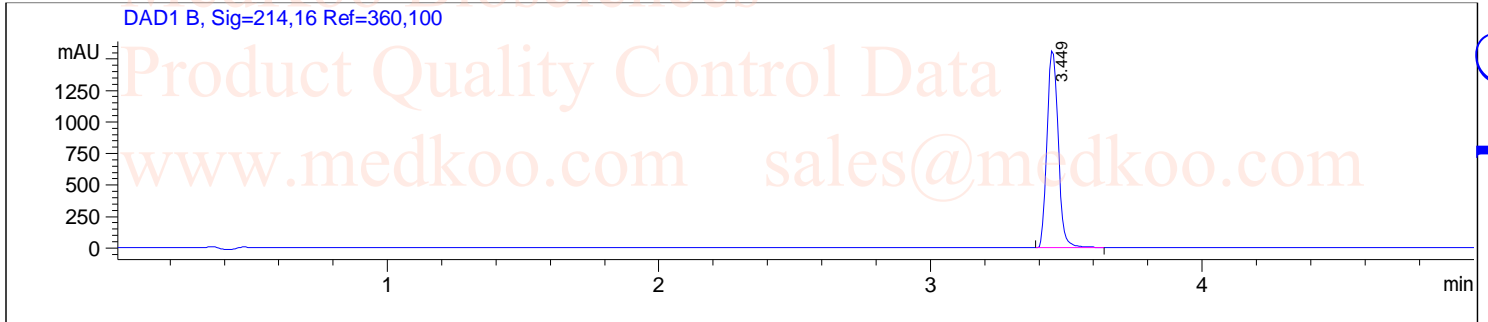
MedKoo Biosciences sales@medkoo.com www.medkoo.com

LY294002 LC/MS Analysis

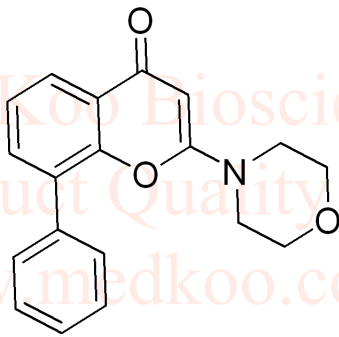
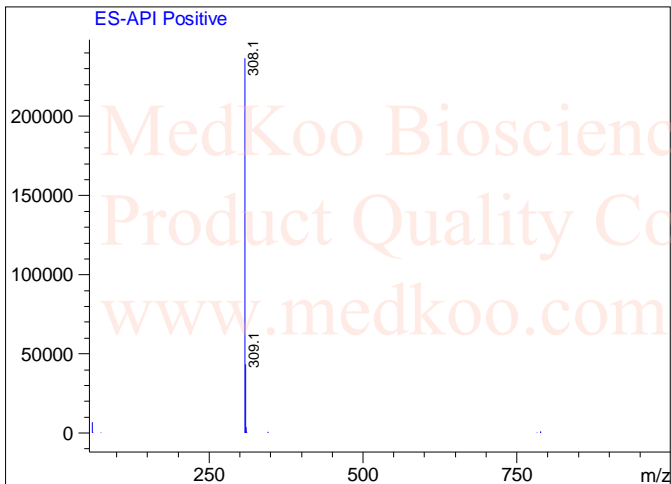
Sample Name : LY4002
Acq. Operator : D
Spec. Reported : MS Integration

Location : Vial 98
Inj : 1
Inj Volume : 5 ul

Tgt Mass(EZX) :



Ret. Time: 3.47 <<<< POSITIVE SPECTRA >>>>



MedKoo Cat#: 201795
Name: LY294002
CAS#: 154447-36-6
Lot# C8R09B17
Chemical Formula: C₁₉H₁₇NO₃
Exact Mass: 307.12084
Molecular Weight: 307.34

MedKoo Biosciences sales@medkoo.com www.medkoo.com