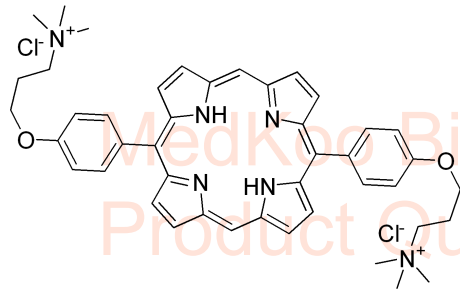


Exeporfinium chloride HNMR Analysis, Solvent: DMSO

MedKoo Biosciences

Product Quality Control Data

www.medkoo.com Sales@medkoo.com



MedKoo Cat#: 319746

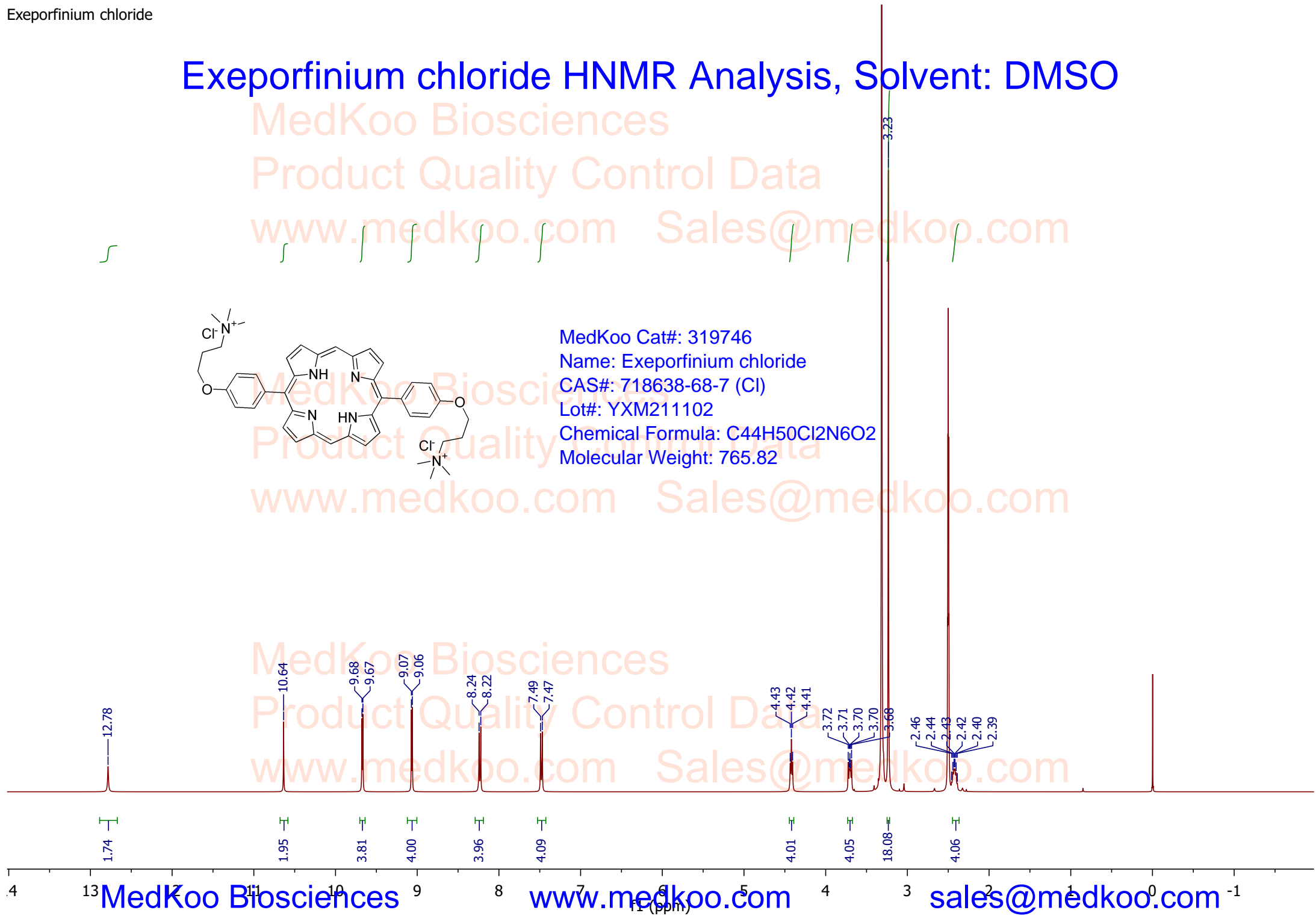
Name: Exeporfinium chloride

CAS#: 718638-68-7 (Cl)

Lot#: YXM211102

Chemical Formula: $\text{C}_{44}\text{H}_{50}\text{Cl}_2\text{N}_6\text{O}_2$

Molecular Weight: 765.82

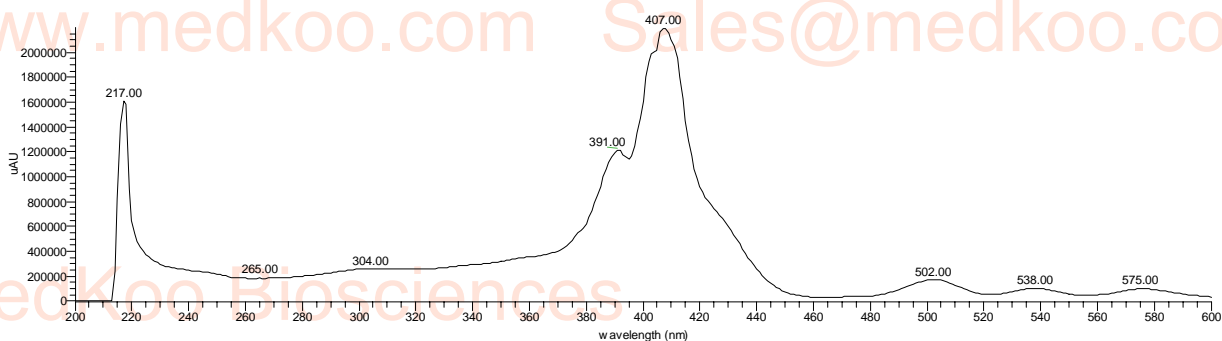
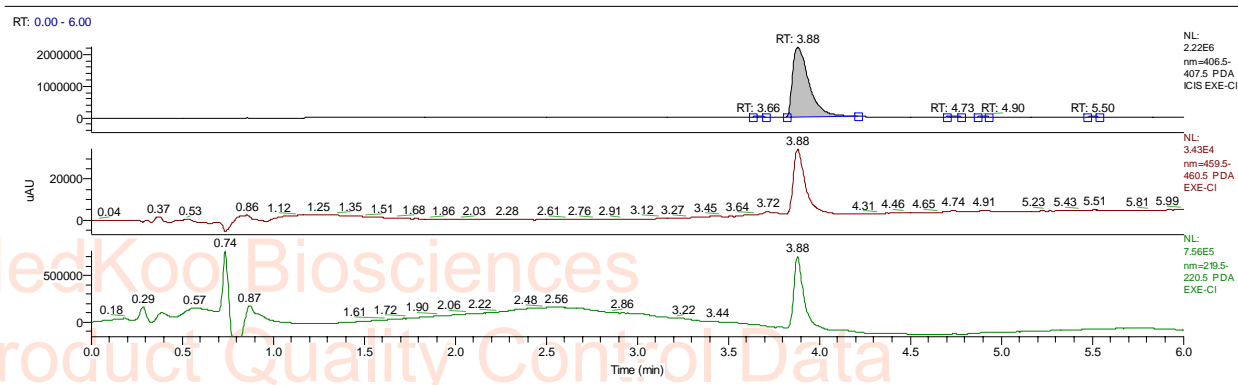


MedKoo Biosciences

Product Quality Control Data

www.medkoo.com Sales@medkoo.com

Exeporfinium chloride HPLC Analysis



PEAK

LIST

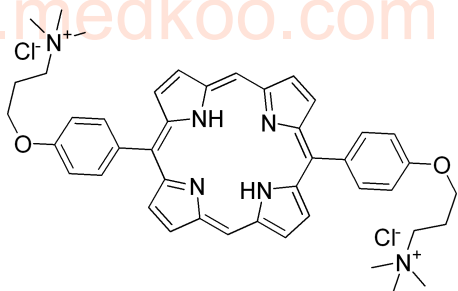
EXE-Cl.RAW

RT: 0.00 - 6.00

Number of detected peaks: 5

Apex

RT	Start RT	End RT	Height	%Height	Area	%Area
3.66	3.63	3.71	33364.53	1.46	86193.06	0.61
3.88	3.82	4.22	2191334	96.13	13887859	98.25
4.73	4.7	4.78	30962.68	1.36	97010.32	0.69
4.9	4.87	4.93	12357.74	0.54	31596.28	0.22
5.5	5.47	5.54	11449.19	0.5	33106.9	0.23



MedKoo Cat#: 319746

Name: Exeporfinium chloride

CAS#: 718638-68-7 (Cl)

Lot#: YXM211102

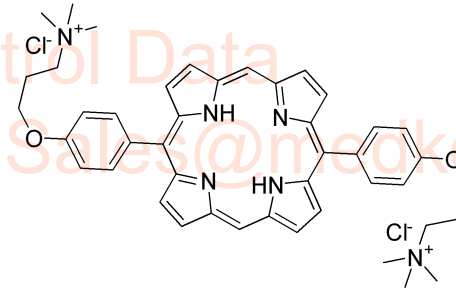
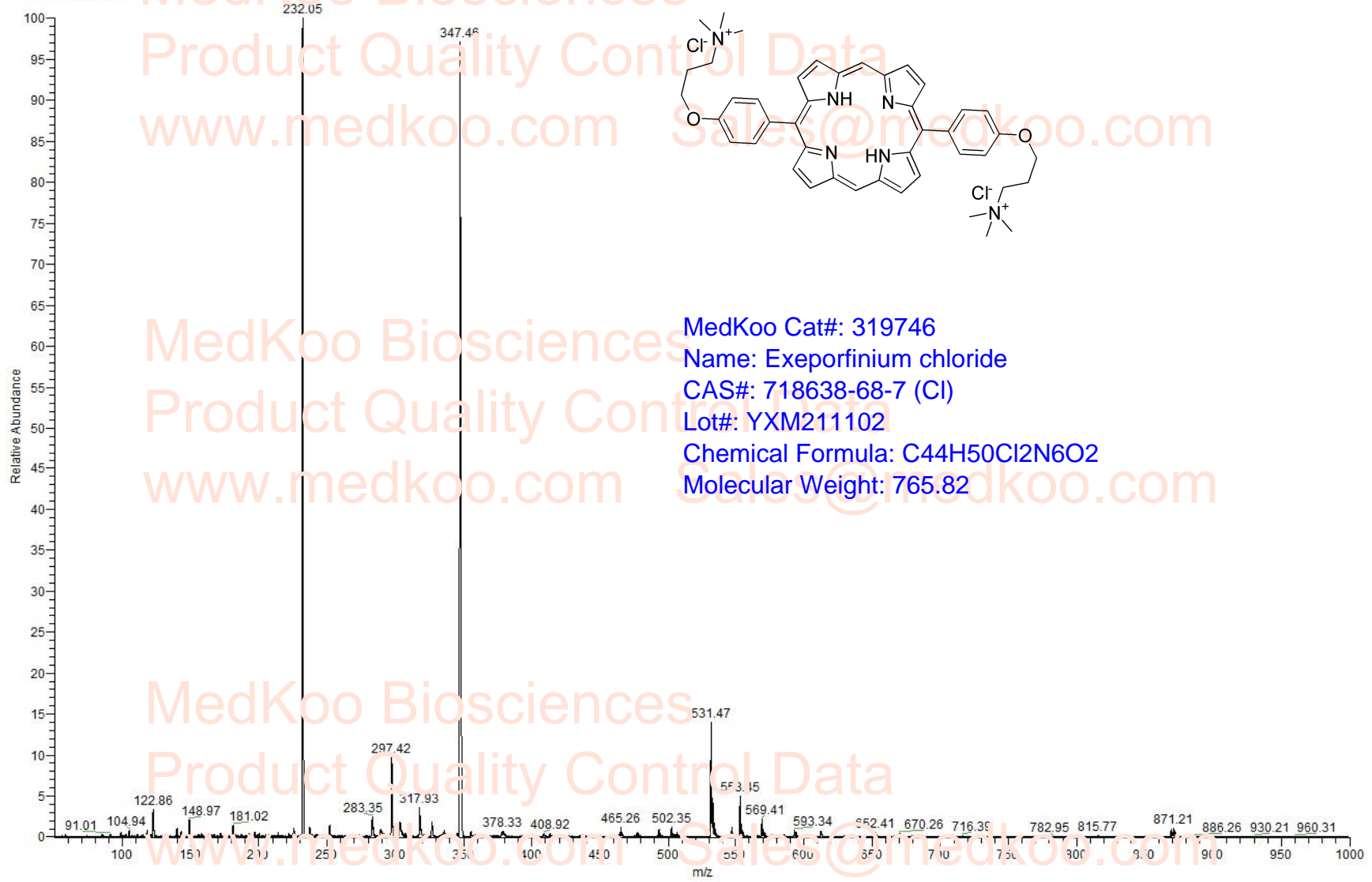
Chemical Formula: C₄₄H₅₀Cl₂N₆O₂

Molecular Weight: 765.82

Exeporfinium chloride MS Analysis

Exeporfinium chloride, MS, [M]⁺⁺ 347.46, [M]⁺⁺⁺ 232.05.

08312021_211027121411#1 PT: 0.05 W: 2 NL: 1.1123
T: +p ESI Q1MS [50.07(-1) 0.0. u]



MedKoo Cat#: 319746

Name: Exeporfinium chloride

CAS#: 718638-68-7 (Cl)

Lot#: YXM211102

Chemical Formula: C₄₄H₅₀Cl₂N₆O₂

Molecular Weight: 765.82