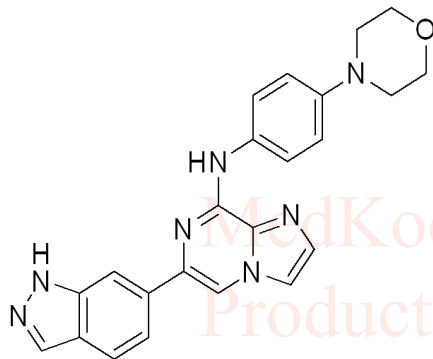
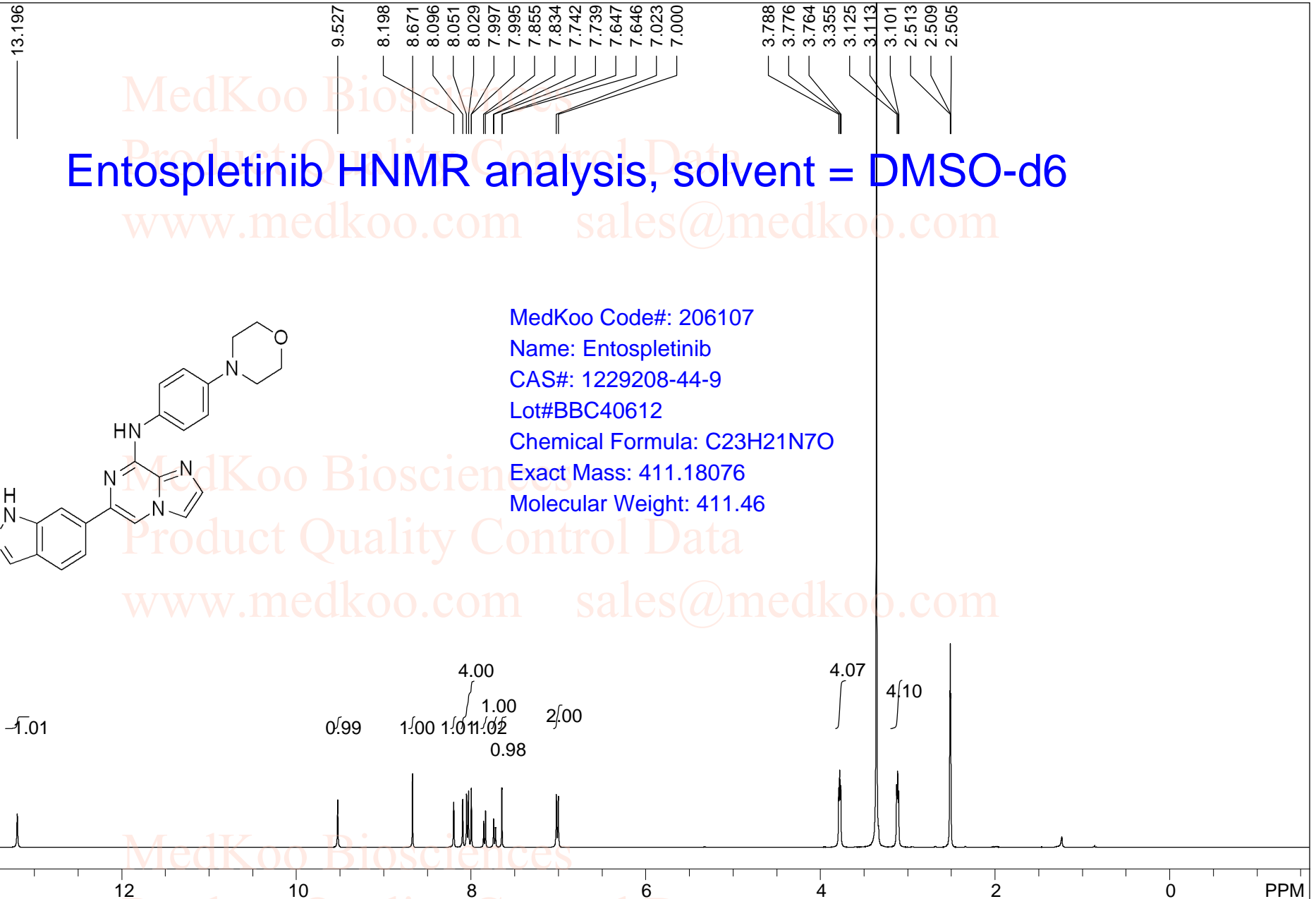


Entospletinib HNMR analysis, solvent = DMSO-d6



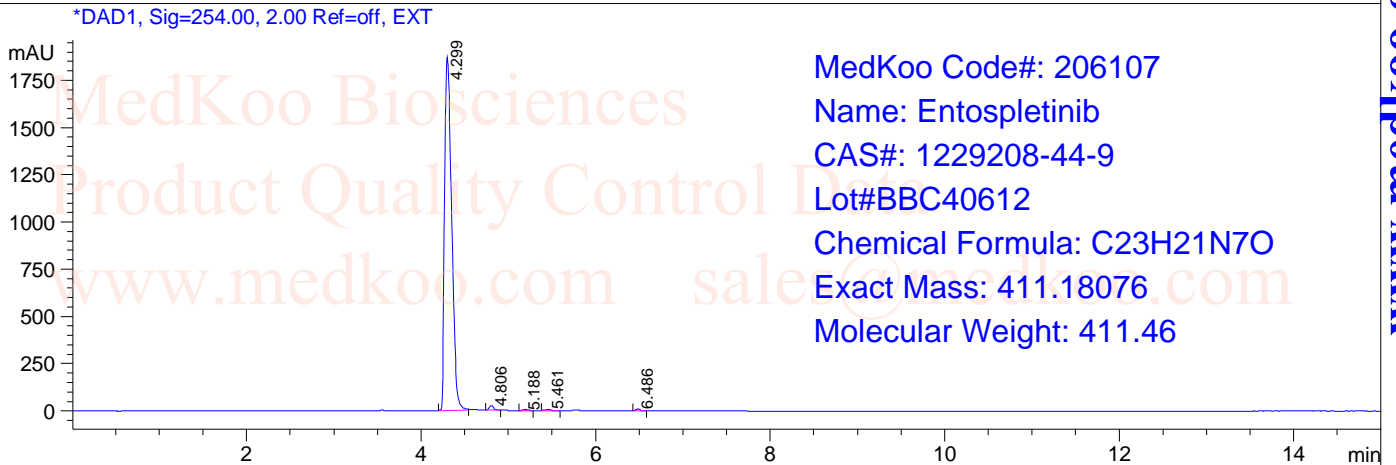
MedKoo Code#: 206107
Name: Entospletinib
CAS#: 1229208-44-9
Lot#BBC40612
Chemical Formula: C₂₃H₂₁N₇O
Exact Mass: 411.18076
Molecular Weight: 411.46



spect, DMSO,							
F1: 400.132	F2: 1.000	SW1: 8013		OF1: 2471.0		PTS1d: 65536	
EX: zg30		PW: 14.8 usec	PD: 1.0 sec	NA: 16	LB: 0.0		Nuts - \$pdata

Entospletinib HPLC analysis

Sample Name : -3 **Seq. Line** : 0
Acq. Operator : 8 **Location** : P2-F-07
Spec. Reported : Integration **Inj** : 0
Acq. Method : D:\Chem32\1.M **Inj Volume** : 2.5 ul
Analysis Method : D:\CHEM32\1.M
Sample Info : Easy-Access Method: '1.M'
Method Info : Method Info : Instrument :HPLC-03



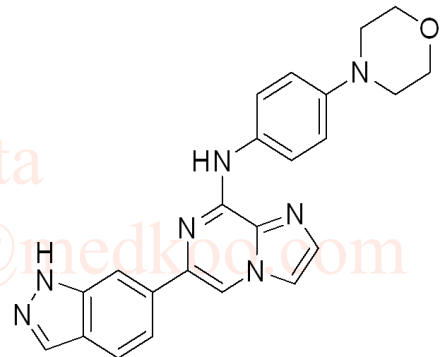
MedKoo Code#: 206107
Name: Entospletinib
CAS#: 1229208-44-9
Lot#: BBC40612
Chemical Formula: C23H21N7O
Exact Mass: 411.18076
Molecular Weight: 411.46

Integration Results for DAD1 B, Sig=214,4 Ref=off

RetTim	Width	Area	Height	Area%
4.30	0.09	5358.68	960.16	99.02
4.81	0.05	37.02	11.20	0.68
6.49	0.05	15.79	4.71	0.29

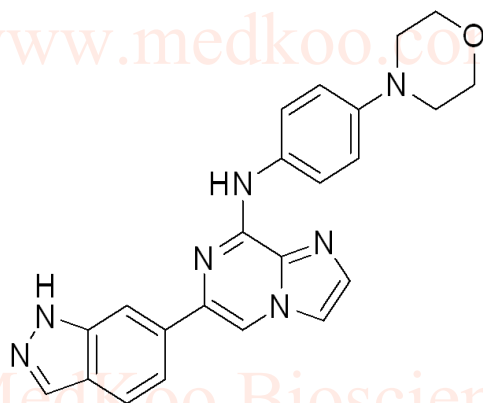
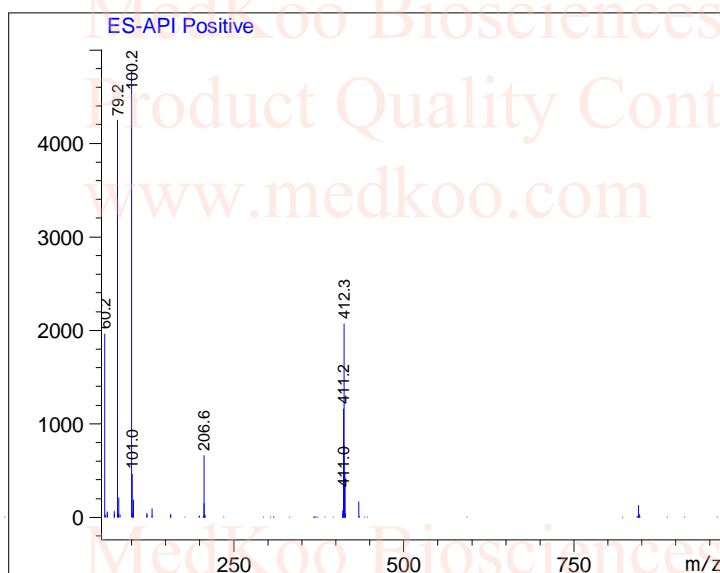
Integration Results for DAD1, Sig=254.00, 2.00 Ref=off, EXT

RetTim	Width	Area	Height	Area%
4.30	0.09	10496.01	1868.99	98.53
4.81	0.05	77.26	23.14	0.73
5.19	0.06	17.43	4.87	0.16
5.46	0.06	29.13	6.47	0.27
6.49	0.05	32.27	9.65	0.30



Entospletinib MS Analysis

Sample Name	: 3	Seq. Line	: 0
Acq. Operator	: 8	Location	: P2-D-07
Spec. Reported	: MS	Inj	: 0
Acq. Method	: D:\Chem32.M	Inj Volume	: 1.8 ul
Analysis Method	: D:\CHEM32.M		
Sample Info	: Easy-Access Method: '1.M'		



MedKoo Code#: 206107

Name: Entospletinib

CAS#: 1229208-44-9

Lot#BBC40612

Chemical Formula: C₂₃H₂₁N₇O

Exact Mass: 411.18076

Molecular Weight: 411.46