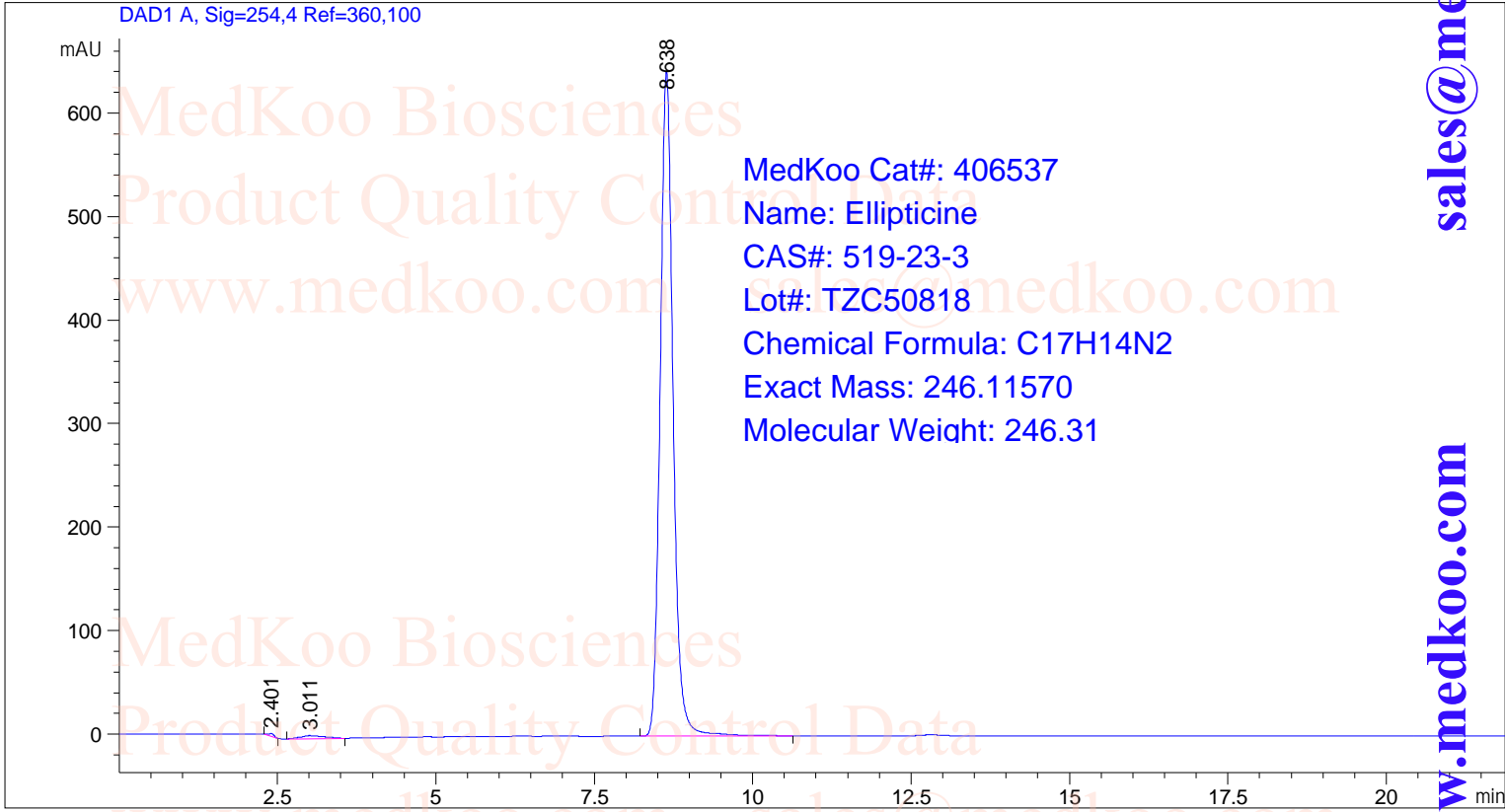


Ellipticine HPLC Analysis

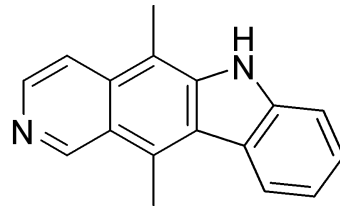
=====
Acq. Operator : SYSTEM
Sample Operator : SYSTEM
Acq. Instrument : HPLC1260 Location : 1
Acq. Method : D:\Methods\def_LC.M Inj Volume : 0.300 µl
Analysis Method : D:\Methods\def_LC.M



=====
Area Percent Report
=====

Sorted By : Signal
Multiplier : 1.0000
Dilution : 1.0000
Use Multiplier & Dilution Factor with ISTDs

Signal 1: DAD1 A, Sig=254,4 Ref=360,100



Peak #	RetTime [min]	Type	Width [min]	Area [mAU*s]	Height [mAU]	Area %
1	2.401	BB	0.0932	17.71660	2.75013	0.1926
2	3.011	BB	0.3477	76.50780	2.95854	0.8318
3	8.638	BB	0.2174	9103.23242	642.11115	98.9755

Totals : 9197.45682 647.81981

Ellipticine MS Analysis

MS Spectrum

