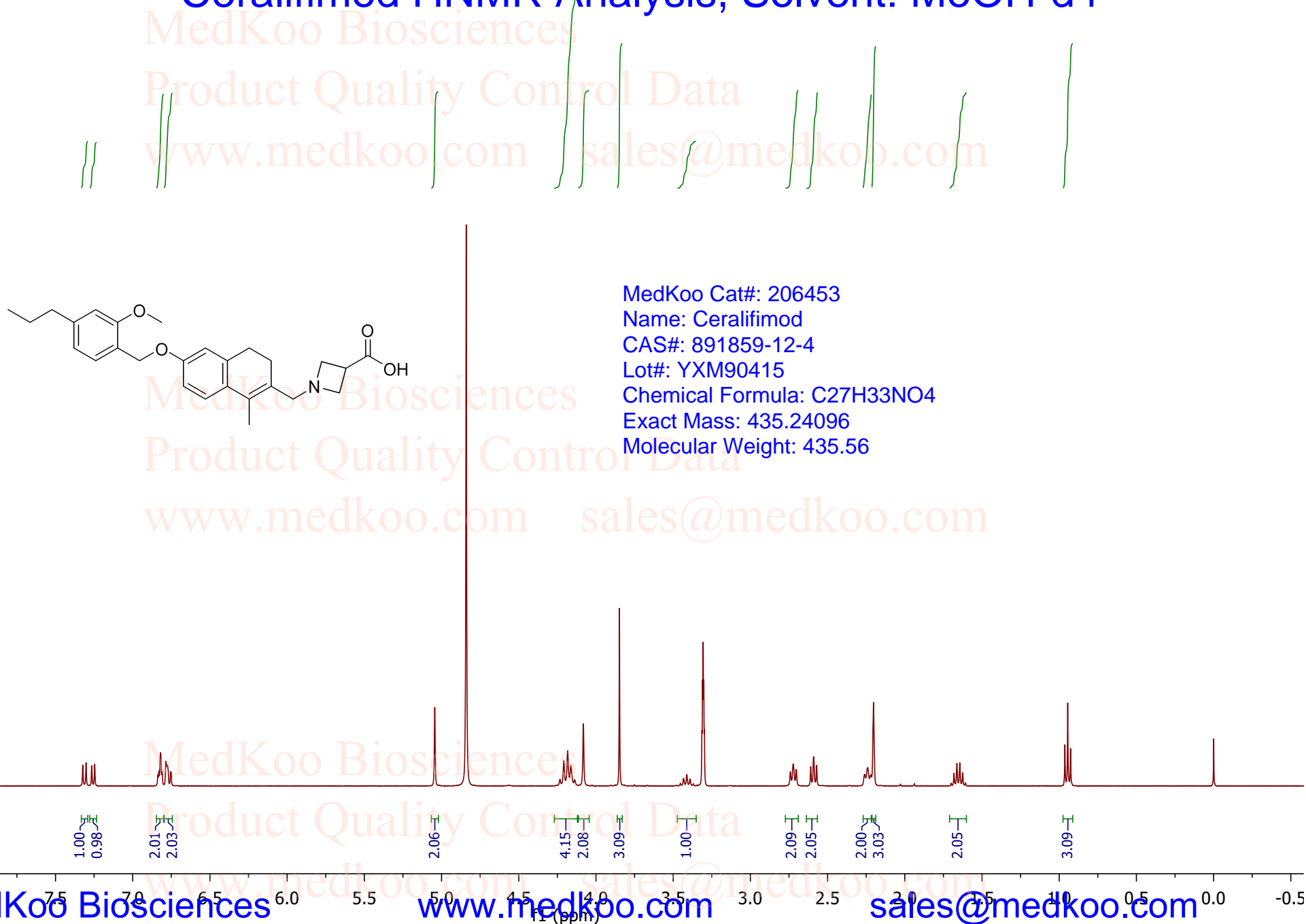
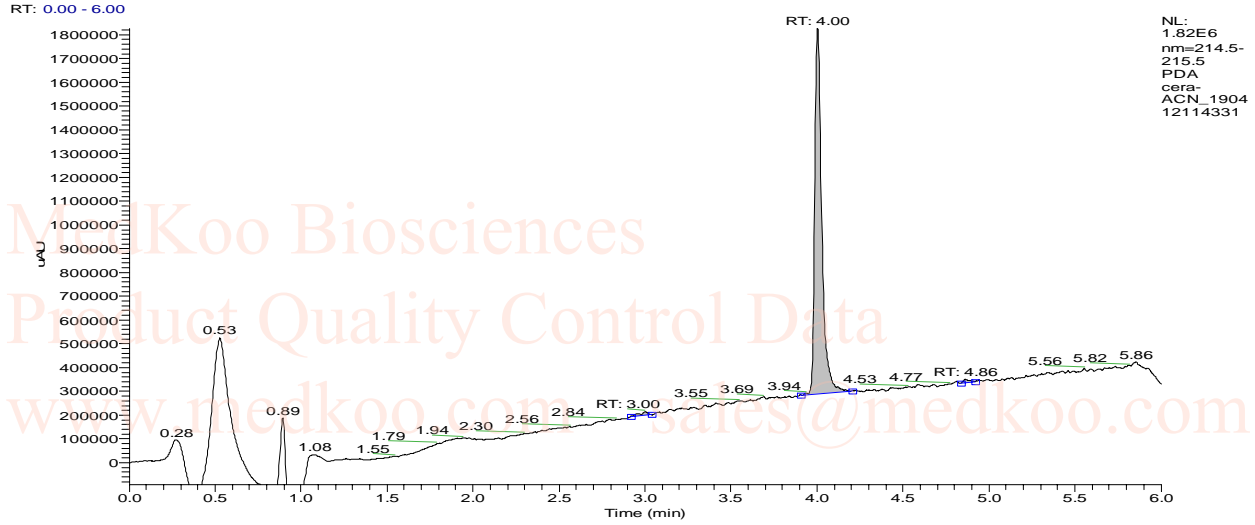


Ceralifimod HNMR Analysis, Solvent: MeOH-d4



Ceralifimod HPLC Analysis



NL:
1.82E6
nm=214.5-
215.5
PDA
cera-
ACN_1904
12114331

PEAK LIST

cera-

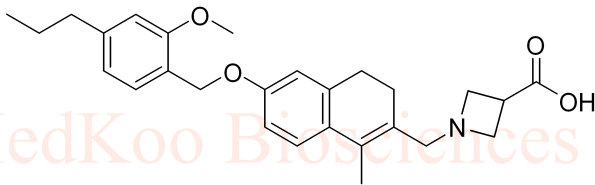
ACN_190412114331.RAW

RT: 0.00 - 6.00

Number of detected peaks: 3

Apex

RT	Start RT	End RT	Area	%Area	Height	%Height
3	2.92	3.04	50541.6	1.11	15413.44	0.99
4	3.9	4.21	4456294	98.12	1534725	98.09
4.86	4.83	4.92	35041.4	0.77	14427.32	0.92



MedKoo Cat#: 206453

Name: Ceralifimod

CAS#: 891859-12-4

Lot#: YXM90415

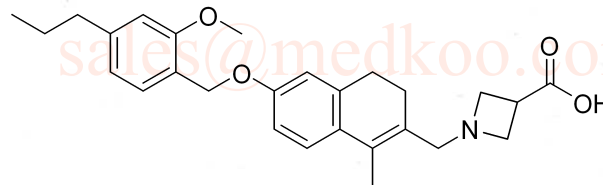
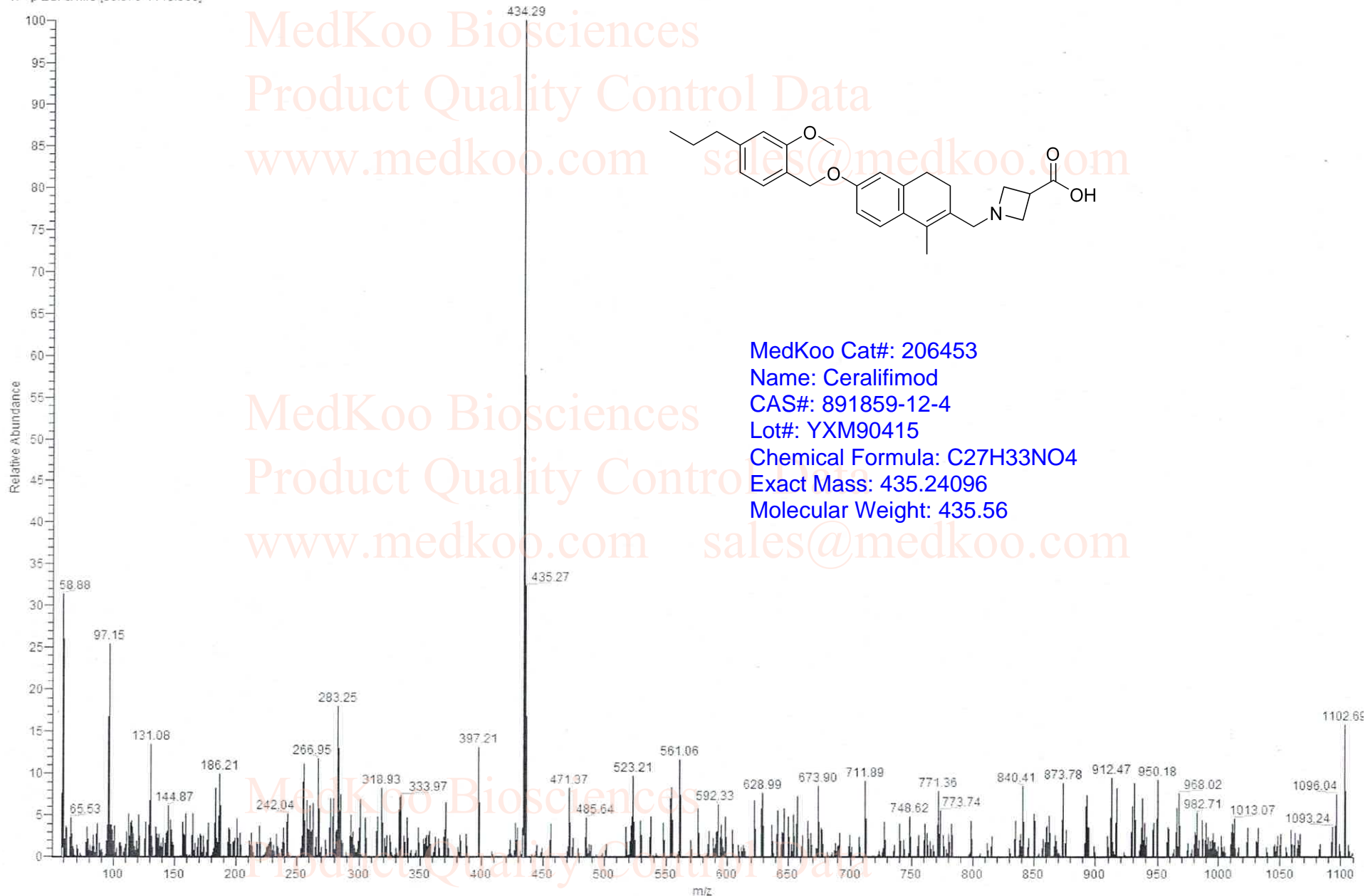
Chemical Formula: C₂₇H₃₃NO₄

Exact Mass: 435.24096

Molecular Weight: 435.56

Ceralifimod MS Analysis

VDM_190301161804 #10 RT: 0.09 AV: 1 NL: 1.06E6
T: - p ESI Q1MS [50.070-1110.000]



MedKoo Cat#: 206453
Name: Ceralifimod
CAS#: 891859-12-4
Lot#: YXM90415
Chemical Formula: C₂₇H₃₃NO₄
Exact Mass: 435.24096
Molecular Weight: 435.56