

11.60

9.22, 8.77, 8.76, 8.16, 7.75, 7.74, 7.74, 7.48, 7.45, 7.15, 7.13, 7.11, 6.88, 6.85

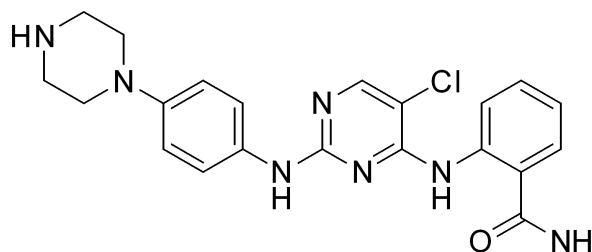
3.35, 2.99, 2.98, 2.97, 2.85, 2.83, 2.82, 2.82, 2.80, 2.51, 2.51, 2.50, 2.24

0.00

CTX0294885 HNMR analysis in DMSO-d6

Product Quality Control Data

www.medkoo.com sales@medkoo.com



MedKoo Cat#: 406457

Name: CTX-0294885

CAS#: 1439934-41-4

Lot#BBC50210

Chemical Formula: C22H24ClN7O

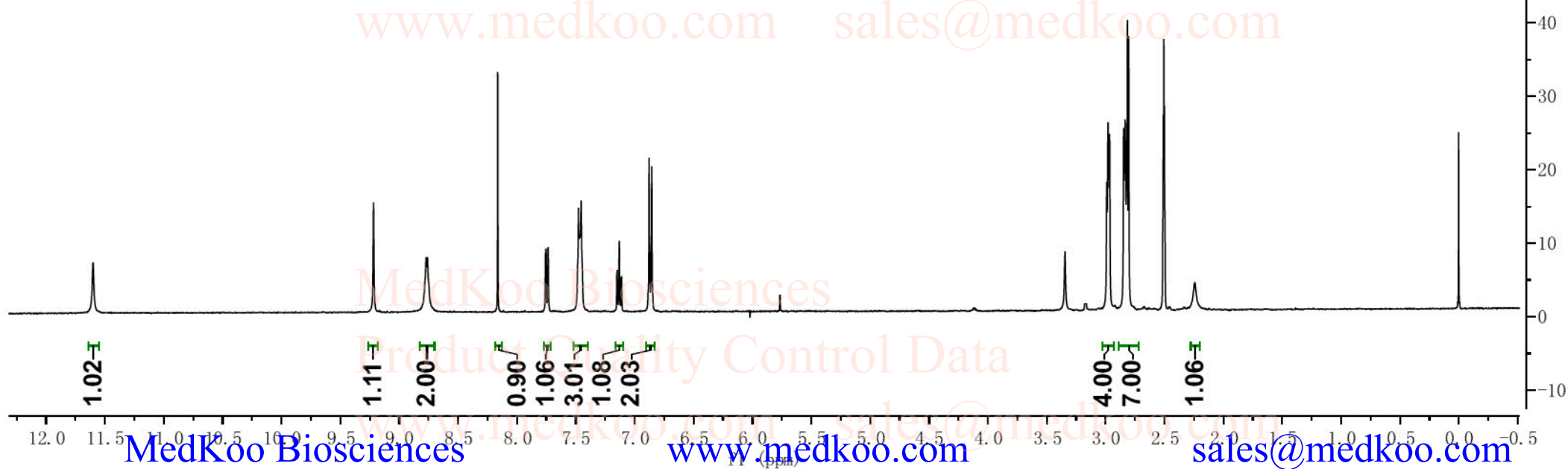
Exact Mass: 437.17309

Molecular Weight: 437.93

MedKoo Biosciences

Product Quality Control Data

www.medkoo.com sales@medkoo.com



MedKoo Biosciences

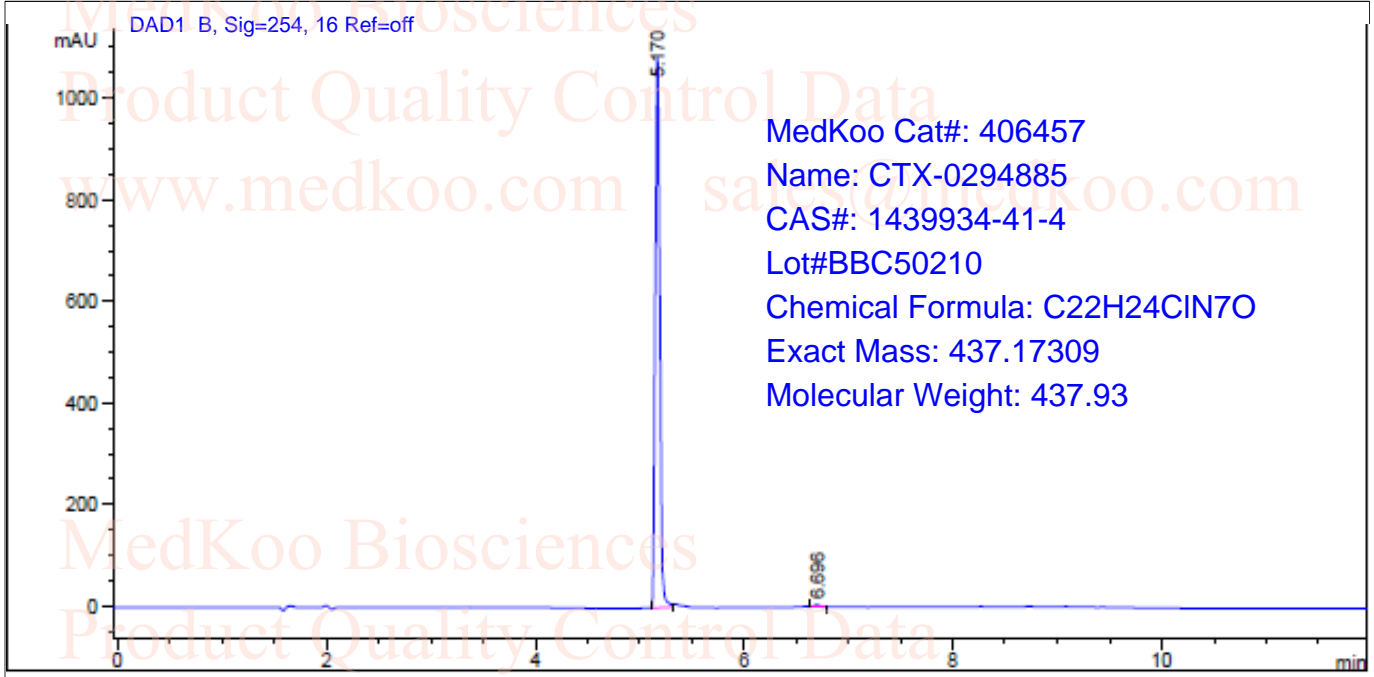
www.medkoo.com

sales@medkoo.com

CTX-0294885 HPLC Analysis

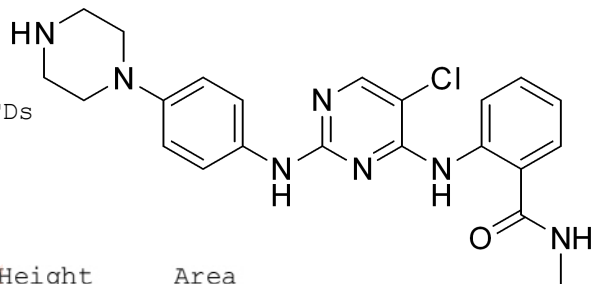
Acq. Operator : 12
Acq. Instrument : Agilent 1100HPLC
Acq. Method : D:\DATA\RAW DATA\LC-12MIN-ACID.M
Method : D:\DATA\RAW DATA\DA.M(LC-12MIN-ACID.M
Seq. Line : 5
Location : Vial 4
Inj : 1
Inj Volume : 1.0 µl
Sample Info : A=0.02% CF3COOH in water, B=ACN. Gradient: 10%-90% in 6 min,
Column: C18 (5µm, 4.6*150mm); Flow rate: 1ml/min

Additional Info : Peak(s) manually integrated



Area Percent Report

Sorted By : Signal
Multiplier : 1.0000
Dilution : 1.0000
Use Multiplier & Dilution Factor with ISTDs



Signal 1: DAD1 B, Sig=254,16 Ref=off

Peak #	RetTime [min]	Type	Width [min]	Area [mAU*s]	Height [mAU]	Area %
1	5.170	BB	0.0479	3357.11987	1090.71875	99.4632
2	6.696	BB	0.0586	18.11743	4.74367	0.5368
Totals :				3375.23730	1095.46242	

CTX0294885 MS analysis

