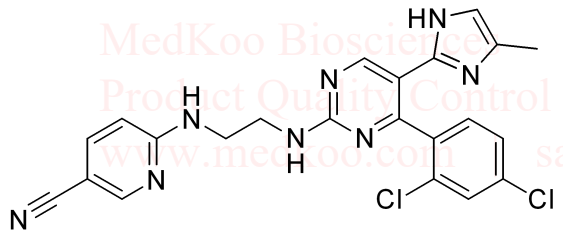


# CHIR-99021 HNMR Analysis, solvent: DMSO

13.421  
13.367

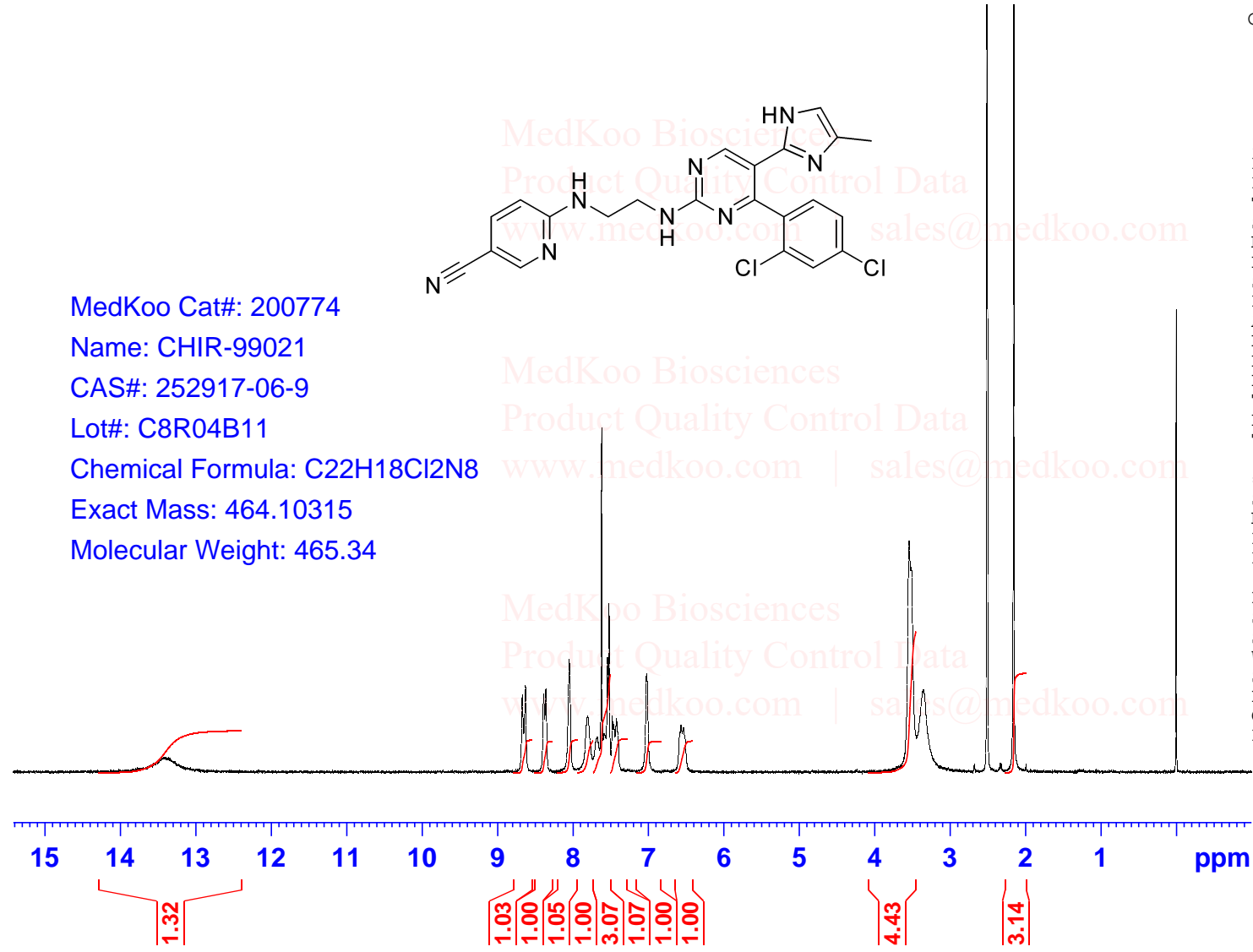
8.675  
8.630  
8.392  
8.359  
8.051  
7.803  
7.686  
7.624  
7.620  
7.590  
7.543  
7.524  
7.478  
7.458  
7.425  
7.022  
6.568  
6.536  
3.544  
3.515  
3.358  
2.514  
2.509  
2.505  
2.159  
0.005



Current Data Parameters

NAME	CHIR-99021
EXPNO	1
PROCNO	1
F2 - Acquisition Parameters	
INSTRUM	spect
PROBHD	5 mm PADUL 13C
PULPROG	zg30
TD	65536
SOLVENT	DMSO
NS	8
DS	2
SWH	8012.820 Hz
FIDRES	0.122266 Hz
AQ	4.0894465 sec
RG	199.46
DW	62.400 usec
DE	6.50 usec
TE	293.5 K
D1	1.00000000 sec
TD0	1
===== CHANNEL f1 =====	
SFO1	400.1324710 MHz
NUC1	1H
P1	10.00 usec
PLW1	20.00000000 W
F2 - Processing parameters	
SI	65536
SF	400.1300000 MHz
WDW	EM
SSB	0
LB	0.30 Hz
GB	0
PC	1.00

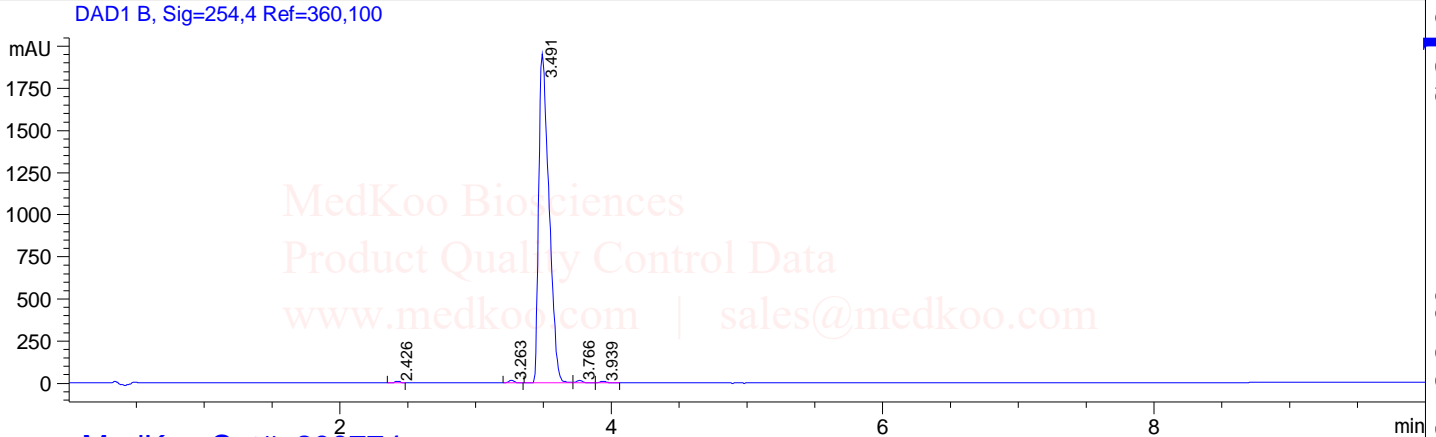
MedKoo Cat#: 200774  
Name: CHIR-99021  
CAS#: 252917-06-9  
Lot#: C8R04B11  
Chemical Formula: C<sub>22</sub>H<sub>18</sub>Cl<sub>2</sub>N<sub>8</sub>  
Exact Mass: 464.10315  
Molecular Weight: 465.34



# CHIR-99021 HPLC Analysis

Sample Name : 2529  
Acq. Operator : 1  
Spec. Reported : Integration

Location : Vial 13  
Inj : 0  
Inj Volume : 7 ul



MedKoo Cat#: 200774

Name: CHIR-99021

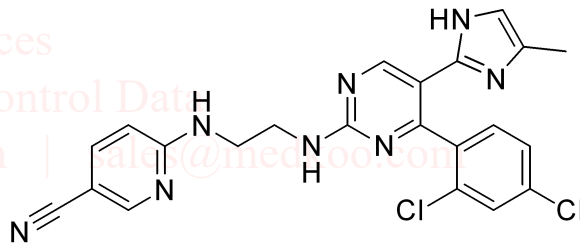
CAS#: 252917-06-9

Lot#: C8R04B11

Chemical Formula: C<sub>22</sub>H<sub>18</sub>Cl<sub>2</sub>N<sub>8</sub>

Exact Mass: 464.10315

Molecular Weight: 465.34

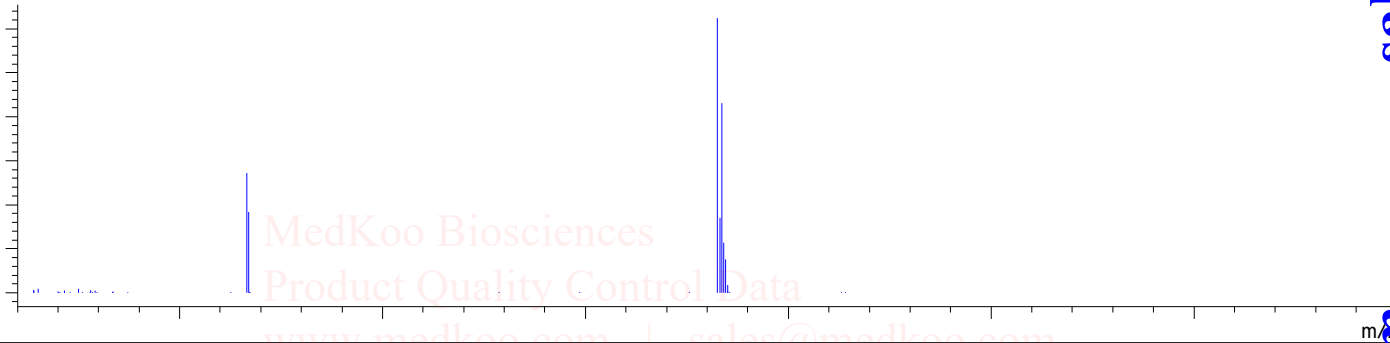


Integration Results for DAD1 B, Sig=254,4 Ref=360,100

RetTim	Width	Area	Height	Area%
2.43	0.04	29.50	10.74	0.28
3.26	0.05	51.66	16.46	0.49
3.49	0.08	10331.95	1957.99	98.35
3.77	0.05	56.60	16.10	0.54
3.94	0.06	35.73	9.73	0.34

# CHIR-99021 LCMS Analysis

Sample Name : 2529  
Acq. Operator : 8



MedKoo Cat#: 200774

Name: CHIR-99021

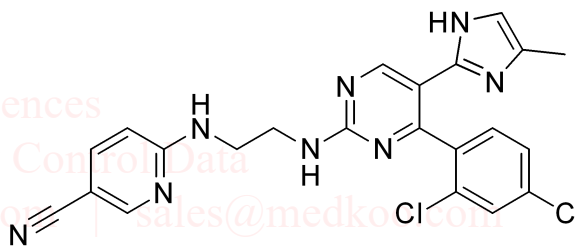
CAS#: 252917-06-9

Lot#: C8R04B11

Chemical Formula: C<sub>22</sub>H<sub>18</sub>Cl<sub>2</sub>N<sub>8</sub>

Exact Mass: 464.10315

Molecular Weight: 465.34



MedKoo Biosciences  
Product Quality Control Data  
www.medkoo.com | sales@medkoo.com

sales@medkoo.com

www.medkoo.com

MedKoo Biosciences