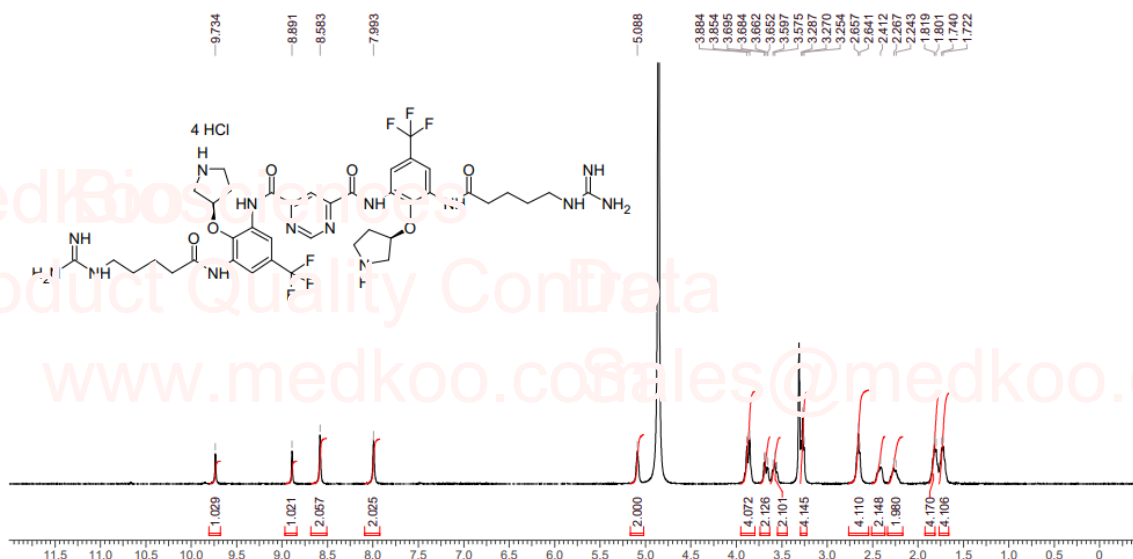


# Brilacidin HCl HNMR Analysis

Solvent: MeOD



MedKoo Cat#: 319690

Name: Brilacidin HCl

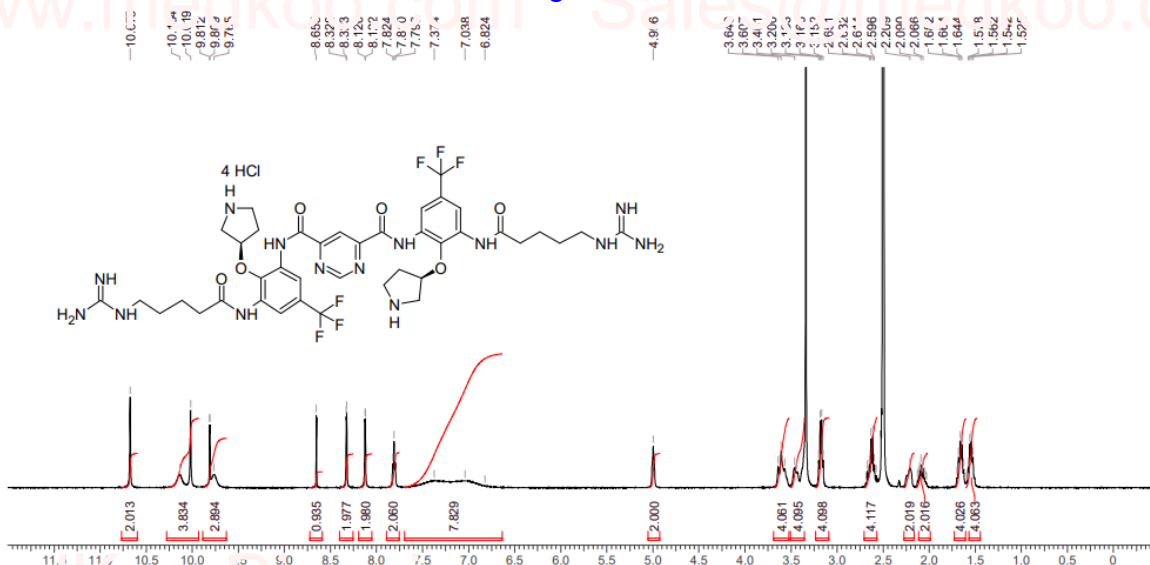
CAS#: 1224095-99-1 (HCl)

Lot#: A21B10C20

Chemical Formula: C<sub>40</sub>H<sub>54</sub>Cl<sub>4</sub>F<sub>6</sub>N<sub>14</sub>O<sub>6</sub>

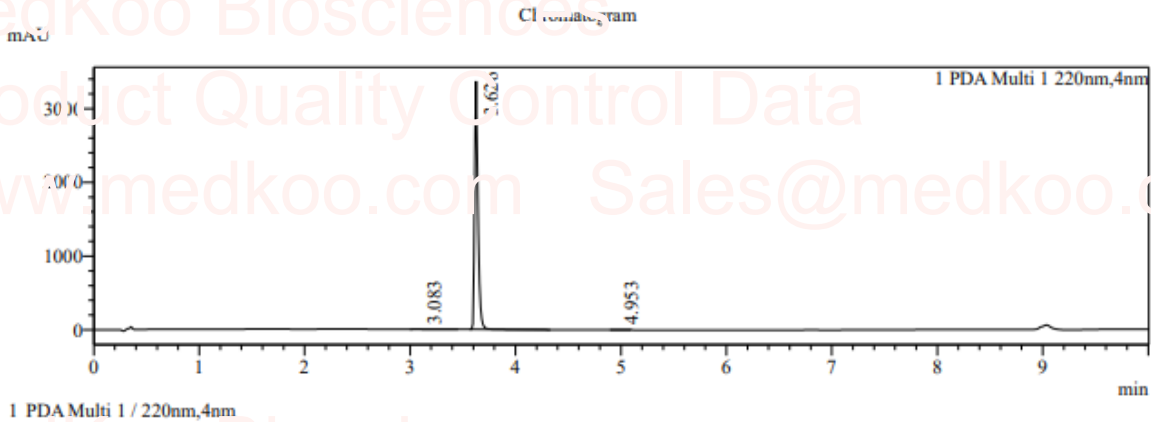
Molecular Weight: 1082.75

Solvent: DMSO



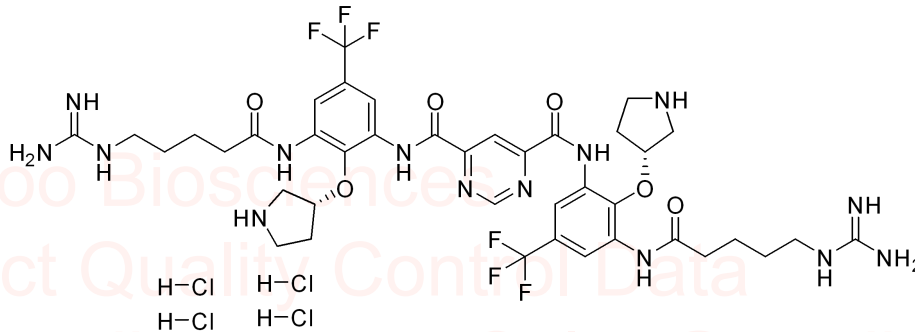
# Brilacidin HCl HPLC Analysis

Compound ID : 1  
 Sample ID : ES20739-1-P1H  
 Injection Vol : 2uL  
 Location : Tray1 vial 23  
 Acq Method : D:\method\1-100AB\_10min.lcm  
 Instrument&Column: HPLC-BO Ultimate C18 3.0 \* 50nm, 3um



## Integration Result

PDA Ch1 220nm		Peak Table						
Peak#	Ret. Time	Height	Area%	Width	Area	Area%	Area%	
1	3.083	1800	0.053	0.173	14234	0.183		
2	3.626	3365953	99.901	0.067	7695914	99.738		
3	4.953	1539	0.046	0.109	5664	0.073		



MedKoo Cat#: 319690

Name: Brilacidin HCl

CAS#: 1224095-99-1 (HCl)

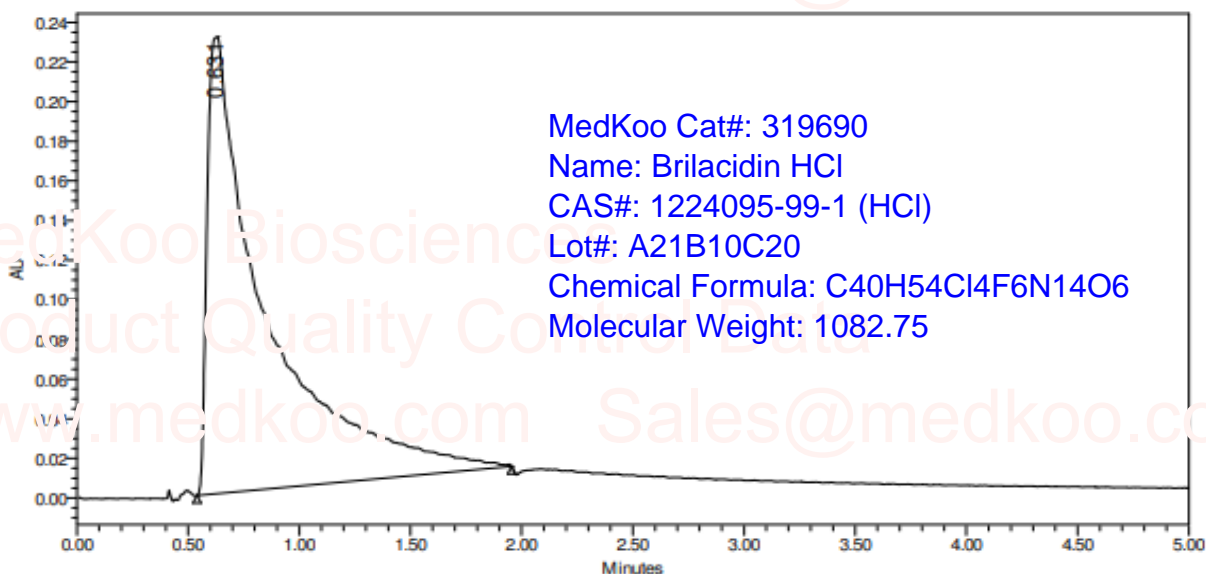
Lot#: A21B10C20

Chemical Formula: C40H54Cl4F6N14O6

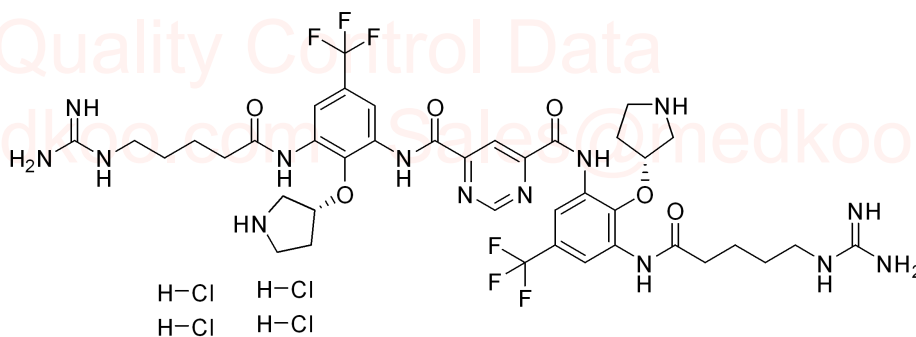
Molecular Weight: 1082.75

# Brilacidin HCl Chiral SFC Report

SAMPLE INFORMATION			
Sample ID:	ES20739-1-P1S_K4	Acquired By:	System
Compound ID:	1224095-99-1		
Acq Method:	OJ_ETOH_DEA_40_28ML_10CM	Vial:	2:D,7
Channel Name:	PDA Ch1 220nm@4.8nm Compens.	Injection Volume:	3.00 ul
Prod. Chnl. Desc.:	PDA Ch1 220nm@4.8nm Compens.		
Method Comments	Column: Chiralcel OJ-3 100Å4.6mm I.D., 3um		
	Mobile phase: A: 20% EtOH in MeCN		
	Isocratic: 100% B		
	Flow rate: 2.8mL/min		
	Column temp.: 35°C		
	ABPR: 15 (0) psi		

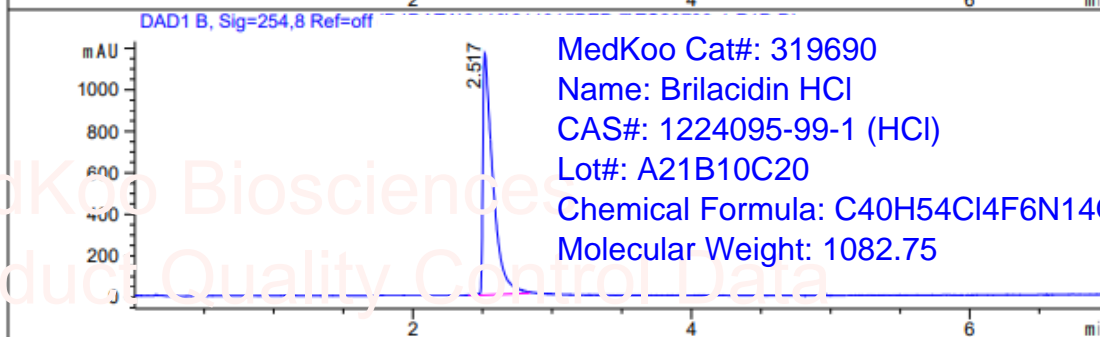
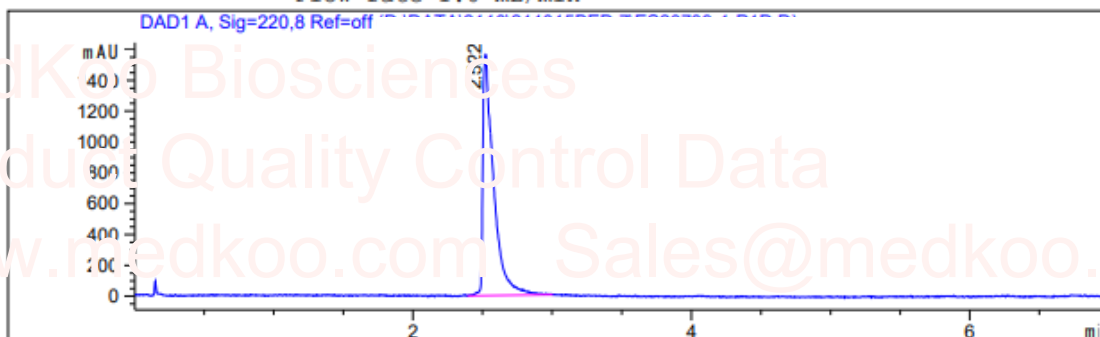


	RT	Area	% Area
1	0.631	4271950	100.00



# Brilacidin HCl LC/MS Analysis

Instrument&Column: LCMS-BE(4-302) Agilent 1260-G6120B  
 Waters Xbridge C18 30\*2.0mm,3.5um  
 Mobile phase : A) 0.04%TFA in Water; B) 0.02%TFA in ACN.  
 Gradient : 0%B increase to 95%B within 5.8 min;  
 hold at 95%B for 1.1 min;  
 then back to 0%B at 6.91 min and hold for 0.09 min.  
 Flow rate 1.0 mL/min



MedKoo Cat#: 319690  
 Name: Brilacidin HCl  
 CAS#: 1224095-99-1 (HCl)  
 Lot#: A21B10C20  
 Chemical Formula: C<sub>40</sub>H<sub>54</sub>Cl<sub>4</sub>F<sub>6</sub>N<sub>14</sub>O<sub>6</sub>  
 Molecular Weight: 1082.75

