

13.222
13.212
13.194
13.173
13.160
13.147
13.142
13.118
13.101
13.091
13.076
13.056
13.033
12.999
12.991

8.458
8.435
8.149
7.937
7.917
7.386
7.363
7.256
7.239
7.219

5.686
5.676
5.658
5.648
5.638
5.620
5.611

3.348
3.208
3.202

2.509
2.506
2.106
2.096
2.088
2.077
2.067

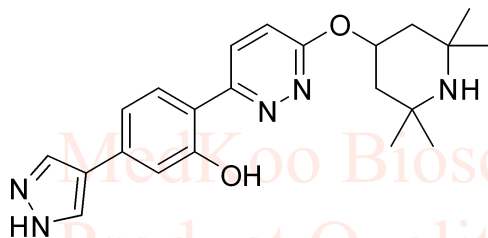
1.369
1.322
1.294
1.265
1.234
1.175
1.155
1.105
0.947
-0.001

Branaplam free base HNMR Analysis, Solvent:DMSO

MedKoo Biosciences

Product Quality Control Data

www.medkoo.com sales@medkoo.com



MedKoo Cat#: 526827

Name: Branaplam free base

CAS#: 1562338-42-4 (free base)

Lot#: A20T11K17

Chemical Formula: C₂₂H₂₇N₅O₂

Exact Mass: 393.2165

Molecular Weight: 393.491

MedKoo Biosciences

Product Quality Control Data

www.medkoo.com sales@medkoo.com

1.23

1.09

2.00

1.10

3/21

1.08

2.23

8/11

6/35

1.05

MedKoo Biosciences

Product Quality Control Data

www.medkoo.com sales@medkoo.com

14

12

10

8

6

4

2

0PPM

NMRB003, DMSO,

F1: 400.232

F2: 1.000

SW1: 8224

OF1: 2474.4

PTS1d: 32768

EX: zg30

www.medkoo.com

PD: 1.00

www.medkoo.com

LB: 0.0

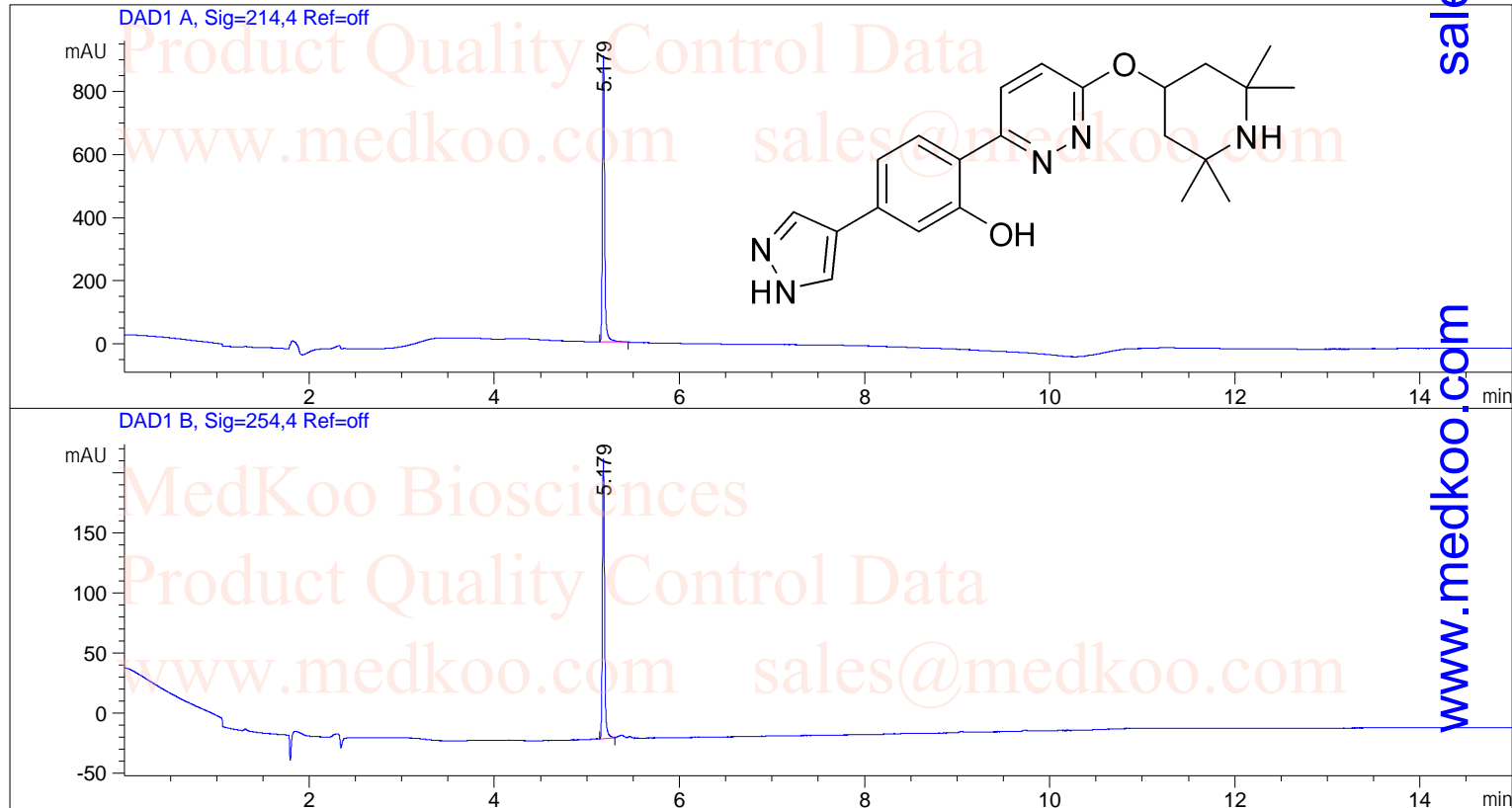
sales@medkoo.com

Nuts - \$pdata

MedKoo Biosciences

Branaplam free base HPLC Analysis

Acq. Operator :
 Acq. Instrument : HPLC Location : P1-D-07
 Sample Name : 1167421-25-1 Inj Volume : 2.0 µl
 Method : C:\CHEM32\1\METHODS\2-HPLC-15MIN.M
 Method Info : Mobile Phase: A: water(0.05%TFA) B: ACN(0.05%TFA)
 Gradient: 5% increase to 95%B within 8 min, 95%B for 7 min.
 Flow Rate: 1.0ml/min
 Column: Sunfire C18, 4.6*150mm, 3.5µm
 Column Temperature: 40 C
 Sample Info : Easy-Access Method: '2-HPLC-15MIN'



Area Percent Report

Signal 1: DAD1 A, Sig=214,4 Ref=off

Peak #	RetTime [min]	Type	Width [min]	Area [mAU*s]	Height [mAU]	Area %
1	5.179	BB	0.0256	1522.97876	907.55072	100.0000

Totals : 1522.97876 907.55072

MedKoo Cat#: 526827
 Name: Branaplam free base
 CAS#: 1562338-42-4 (free base)
 Lot#: A20T11K17
 Chemical Formula: C22H27N5O2
 Exact Mass: 393.2165
 Molecular Weight: 393.491

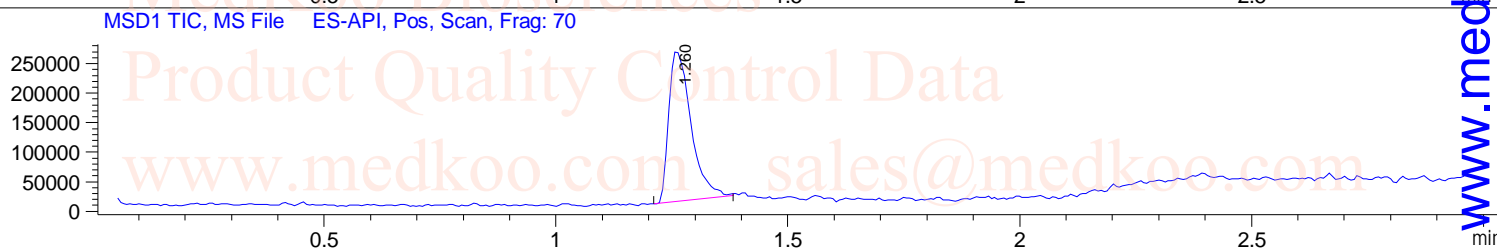
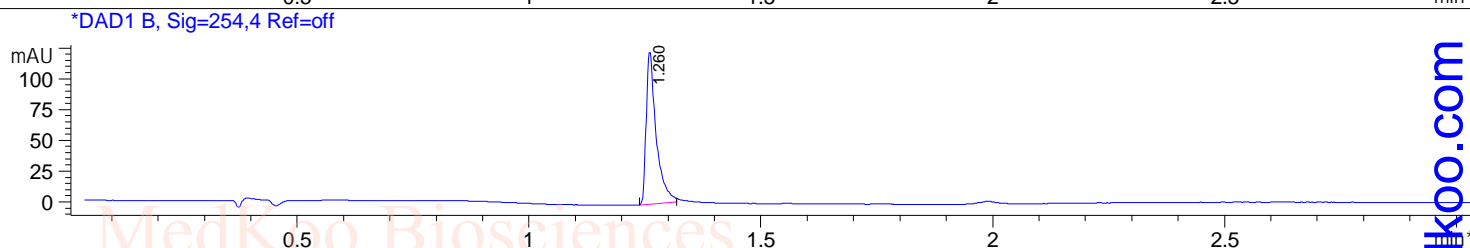
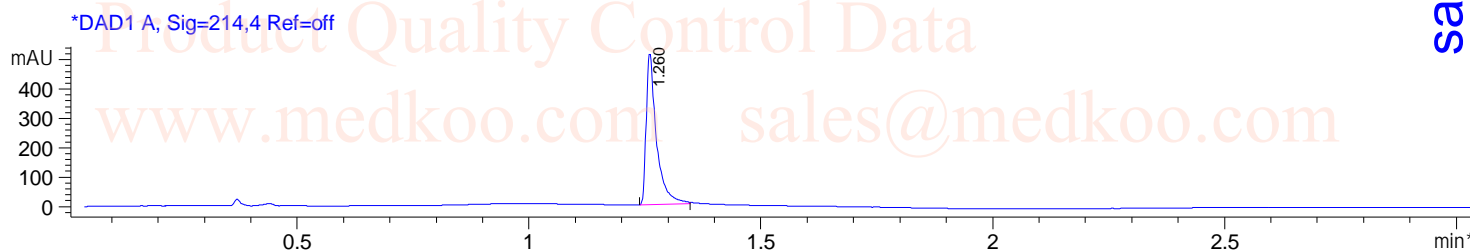
Signal 2: DAD1 B, Sig=254,4 Ref=off

Peak #	RetTime [min]	Type	Width [min]	Area [mAU*s]	Height [mAU]	Area %
1	5.179	BB	0.0250	379.14972	232.83490	100.0000

Totals : 379.14972 232.83490

Branaplam free base LC/MS Analysis

Sample Name : 1167421-25-1 Tgt Mass(EZX) :
Acq. Operator : Location : P1-A-07
Spec. Reported : MS Integration Inj : 1
Acq. Method : D:\METHODS\1-POS-3MIN.M Inj Volume : 2 ul
Analysis Method : D:\METHODS\1-POS-3MIN.M
Sample Info : Easy-Access Method: '1-POS-3MIN.M'
Method Info : Mobile Phase: A: water(0.01%TFA) B: ACN(0.01%TFA)
Gradient: 5%B increase to 95%B within 1.3 min, 95%B for 1.7 min.
Flow Rate: 2.0ml/min
Column: Sunfire C18, 4.6*50mm, 3.5um
Column Temperature: 50 C
Detection: UV(214,4nm) and MS(ESI, Pos mode, 110 to 1000 amu)



Ret. Time: 1.26 <<<< POSITIVE SPECTRA >>>>

