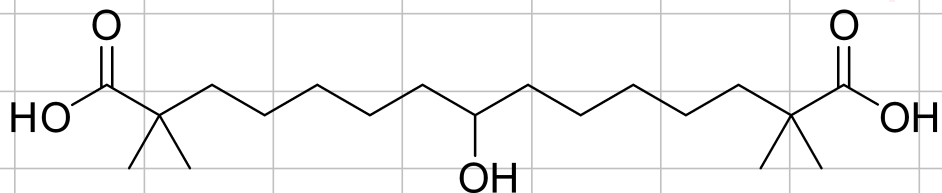
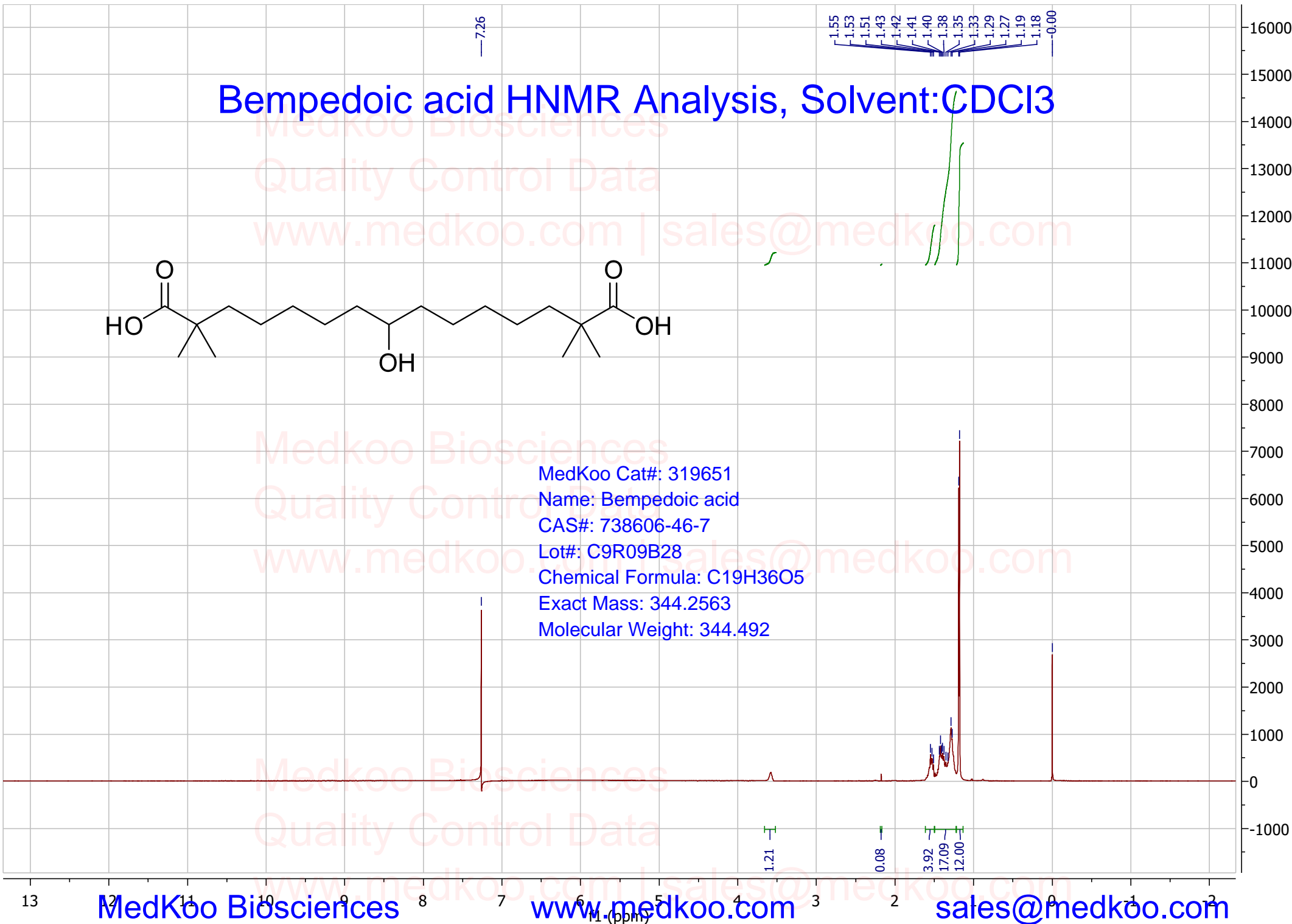


Bempedoic acid HNMR Analysis, Solvent:CDCl3



MedKoo Cat#: 319651
Name: Bempedoic acid
CAS#: 738606-46-7
Lot#: C9R09B28
Chemical Formula: C₁₉H₃₆O₅
Exact Mass: 344.2563
Molecular Weight: 344.492

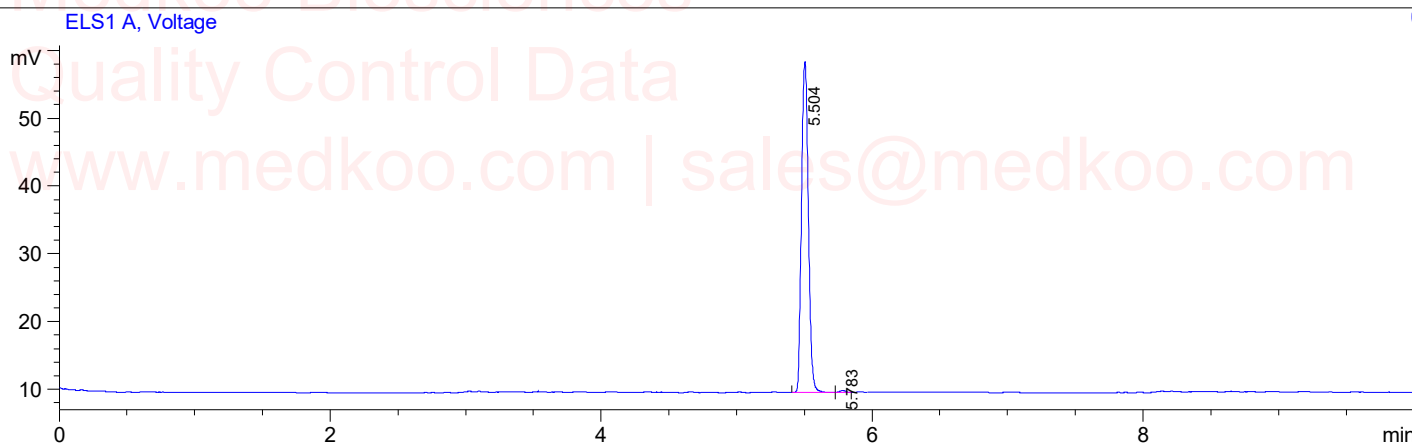


Bempedoic acid HPLC Analysis Report

Sample Name : 738606-46-7
Acq. Operator : 1
Spec. Reported : Integration

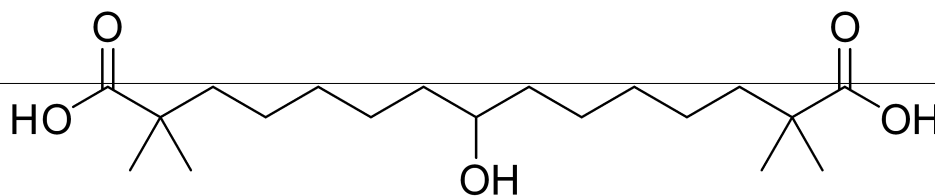
Location : P2-B-05
Inj : 0
Inj Volume : 9 ul

Medkoo Biosciences
Quality Control Data
www.medkoo.com | sales@medkoo.com



Integration Results for ELS1 A, Voltage

RetTim	Width	Area	Height	Area%
5.50	0.06	173.14	48.83	99.39
5.78	0.06	1.07	0.31	0.61



Medkoo Biosciences
Quality Control Data
www.medkoo.com | sales@medkoo.com

MedKoo Cat#: 319651
Name: Bempedoic acid
CAS#: 738606-46-7
Lot#: C9R09B28
Chemical Formula: C₁₉H₃₆O₅
Exact Mass: 344.2563
Molecular Weight: 344.492

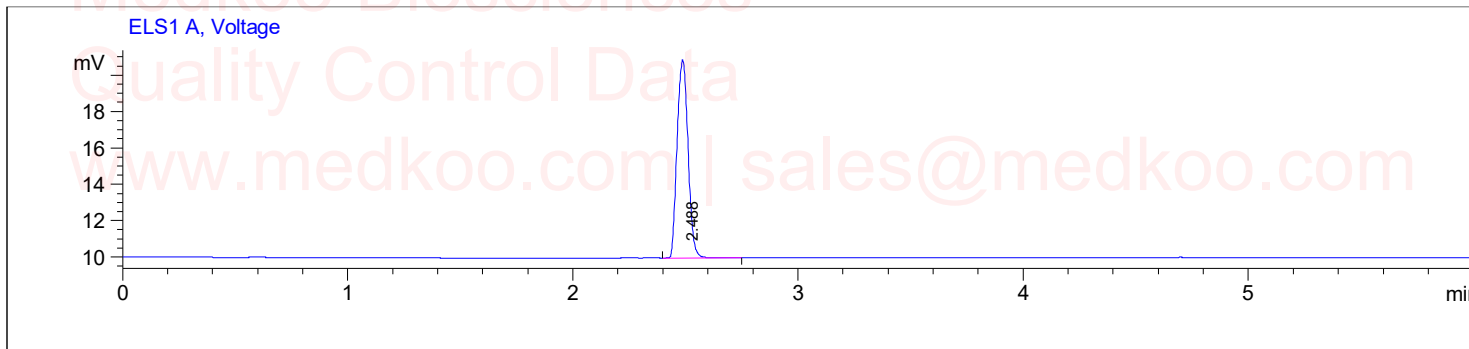
Bempedoic acid LC/MS Analysis Report

Sample Name : 738606-46-7
Acq. Operator : D
Spec. Reported : MS Integration

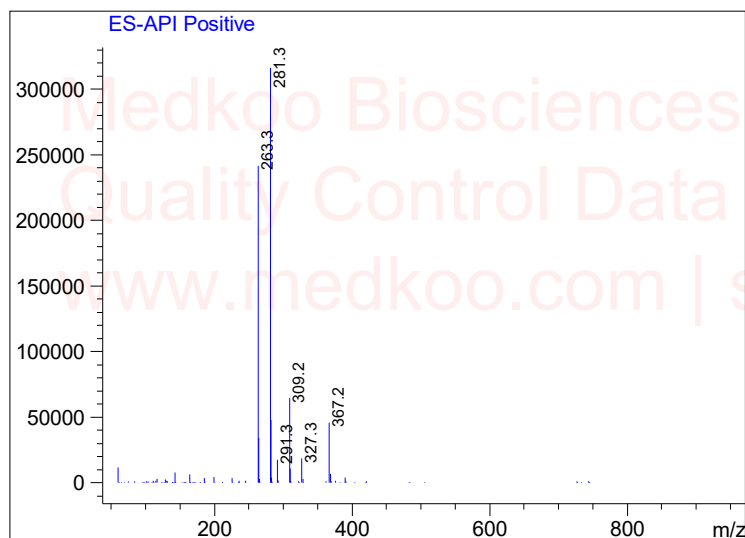
Location : P2-B-01

Inj : 1
Inj Volume : 7 ul

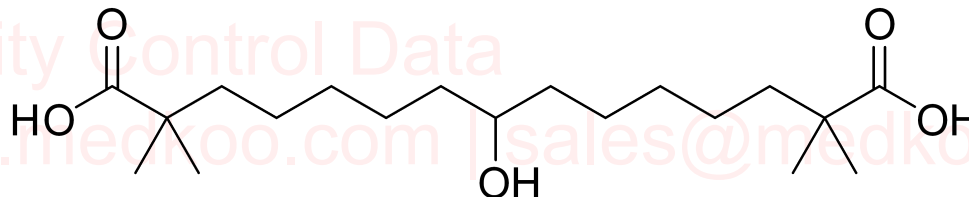
Medkoo Biosciences
Quality Control Data
www.medkoo.com | sales@medkoo.com



Ret. Time: 2.51 <<<< POSITIVE SPECTRA >>>>



MedKoo Cat#: 319651
Name: Bempedoic acid
CAS#: 738606-46-7
Lot#: C9R09B28
Chemical Formula: C₁₉H₃₆O₅
Exact Mass: 344.2563
Molecular Weight: 344.492



Medkoo Biosciences
Quality Control Data
www.medkoo.com | sales@medkoo.com

sales@medkoo.com
www.medkoo.com
MedKoo Biosciences