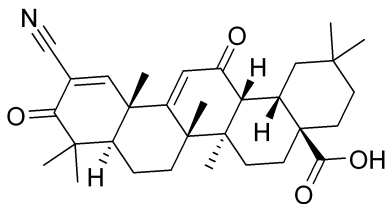
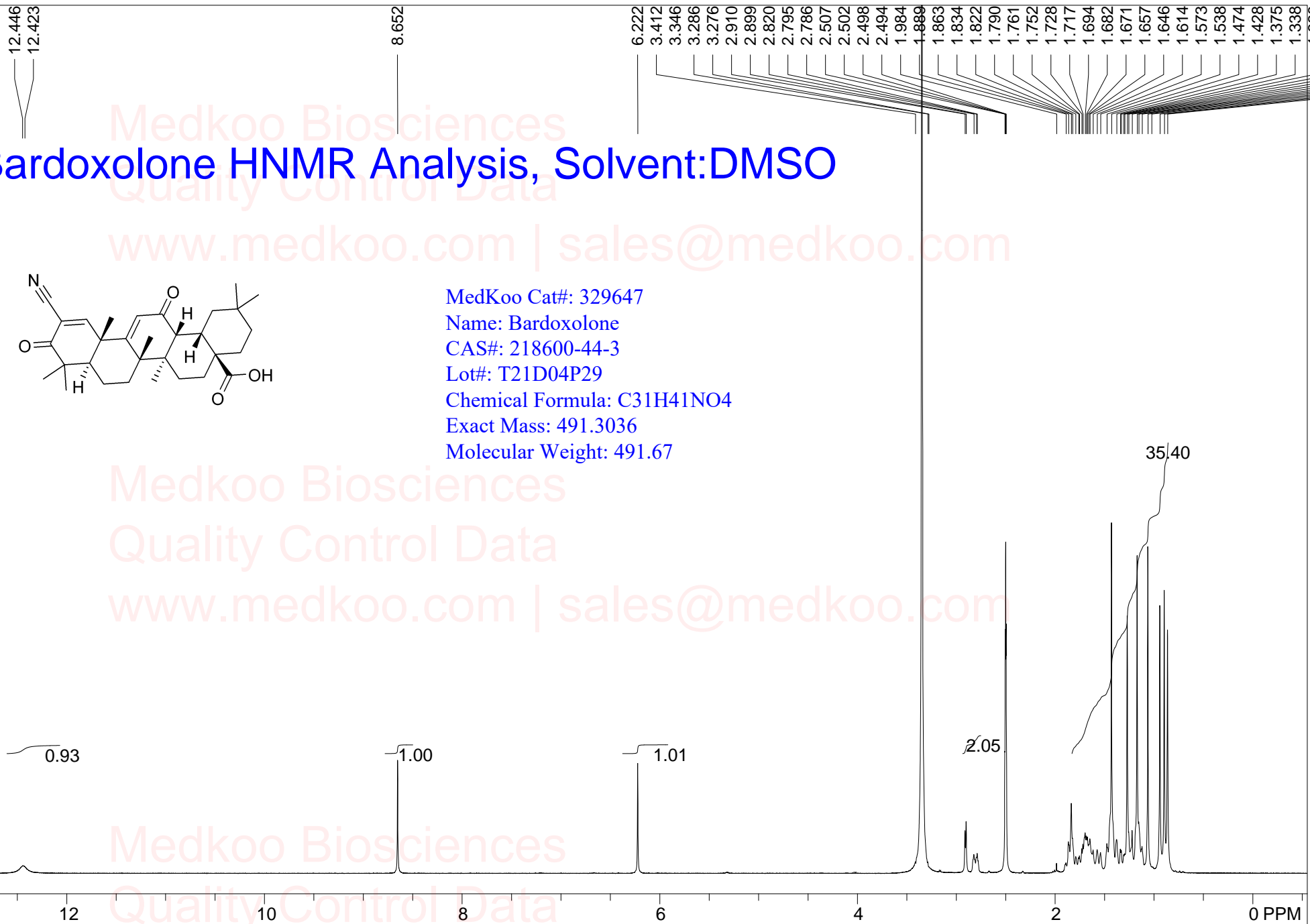


# Bardoxolone HNMR Analysis, Solvent:DMSO



MedKoo Cat#: 329647  
 Name: Bardoxolone  
 CAS#: 218600-44-3  
 Lot#: T21D04P29  
 Chemical Formula: C<sub>31</sub>H<sub>41</sub>NO<sub>4</sub>  
 Exact Mass: 491.3036  
 Molecular Weight: 491.67



Medkoo Biosciences  
 Quality Control Data  
 www.medkoo.com | sales@medkoo.com

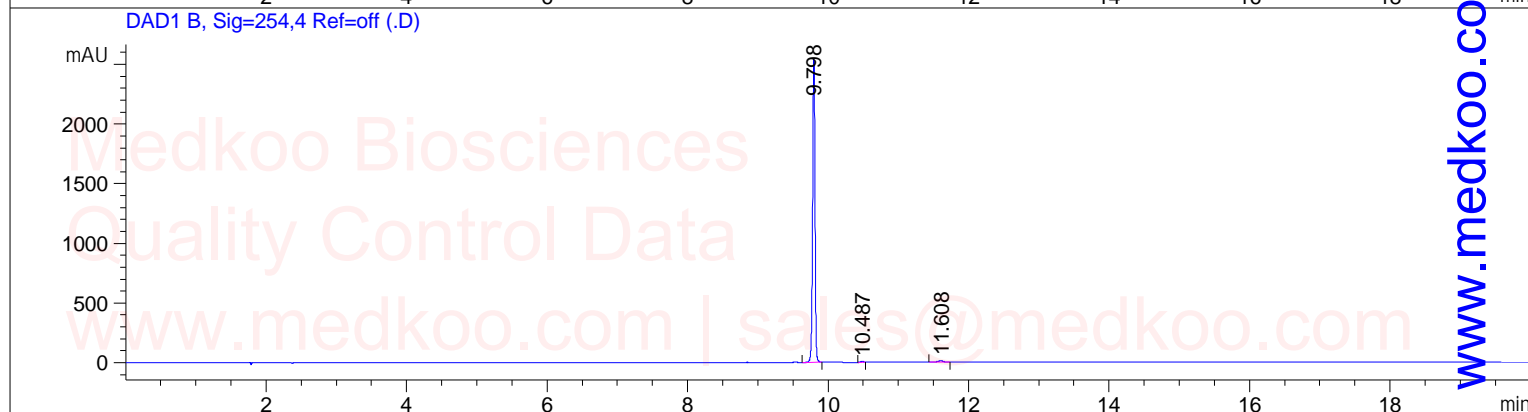
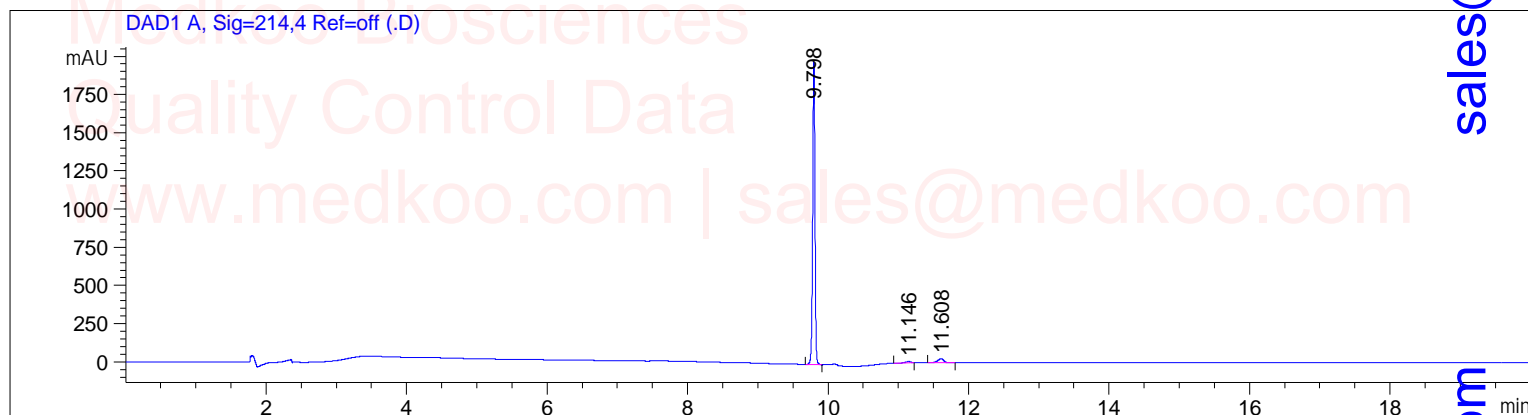
Medkoo Biosciences  
 Quality Control Data  
 www.medkoo.com | sales@medkoo.com

NMRB003, DMSO,

F1: 400.232	F2: 1.000	SW1: 8224	OF1: 2471.0	PTS1d: 32768
EX: zg30		PD: 1.00000000	LB: 0.0	Nuts - \$pdata

# Bardoxolone HPLC Analysis

=====  
 Acq. Operator :  
 Acq. Instrument : HPLC Location : P1-A-09  
 Sample Name : Bardoxolone Inj Volume : 3.3 µl  
 Method : C:\CHEM32\1\METHODS\2-HPLC-15MIN.M  
 Method Info : Mobile Phase: A: water(0.05%TFA) B: ACN(0.05%TFA)  
 Gradient: 5% increase to 95%B within 8 min, 95%B for 7 min.  
 Flow Rate: 1.0ml/min  
 Column: Sunfire C18, 4.6\*150mm, 3.5µm  
 Column Temperature: 40 C  
 Sample Info : Easy-Access Method: '2-HPLC-15MIN'



## Area Percent Report

Signal 1: DAD1 A, Sig=214,4 Ref=off

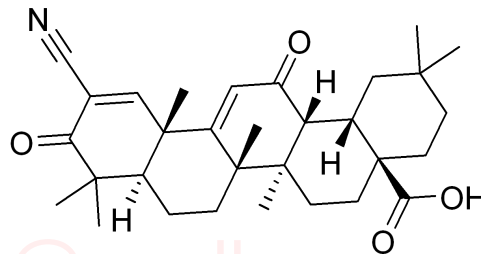
Peak #	RetTime [min]	Type	Width [min]	Area [mAU*s]	Height [mAU]	Area %
1	9.798	BB	0.0347	4460.00000	1982.39197	98.1357
2	11.146	BB	0.0661	40.25539	8.40644	0.8650
3	11.608	BB	0.0887	53.54088	8.16036	0.9993

Totals : 4653.79626 2016.95877

Signal 2: DAD1 B, Sig=254,4 Ref=off

Peak #	RetTime [min]	Type	Width [min]	Area [mAU*s]	Height [mAU]	Area %
1	9.798	BB	0.0365	5988.03516	2538.74438	98.6094
2	10.487	BB	0.0354	19.06842	8.41498	0.3140
3	11.608	BB	0.0860	65.37459	11.46763	1.0766

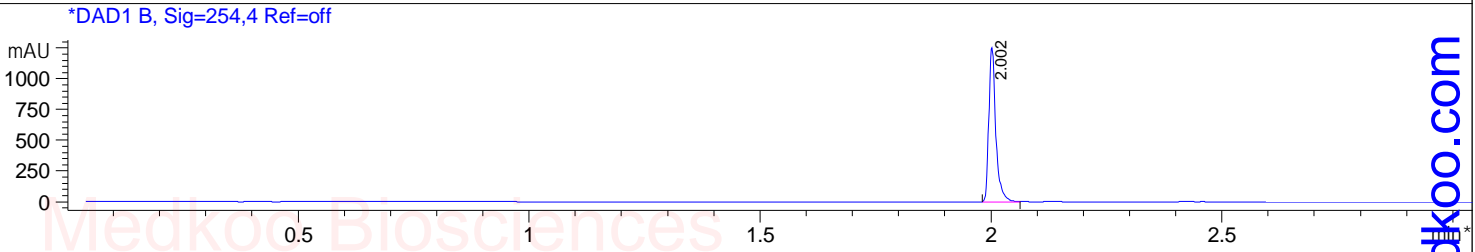
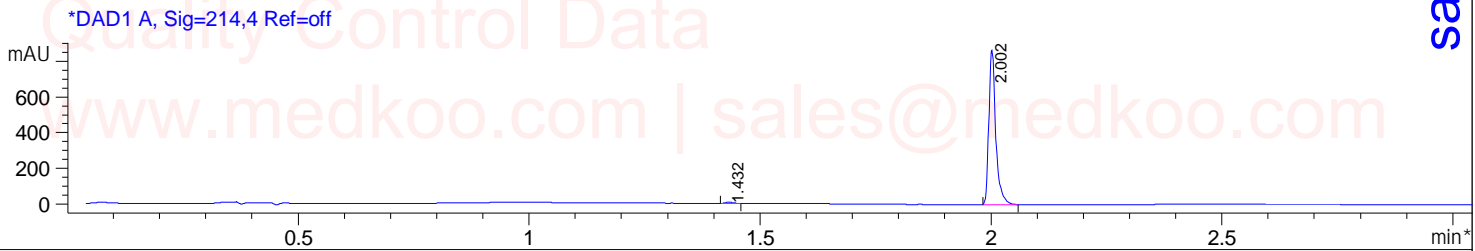
Totals : 6072.47817 2558.62700



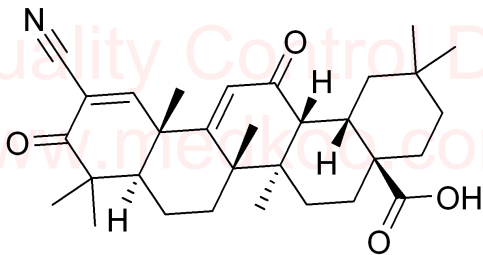
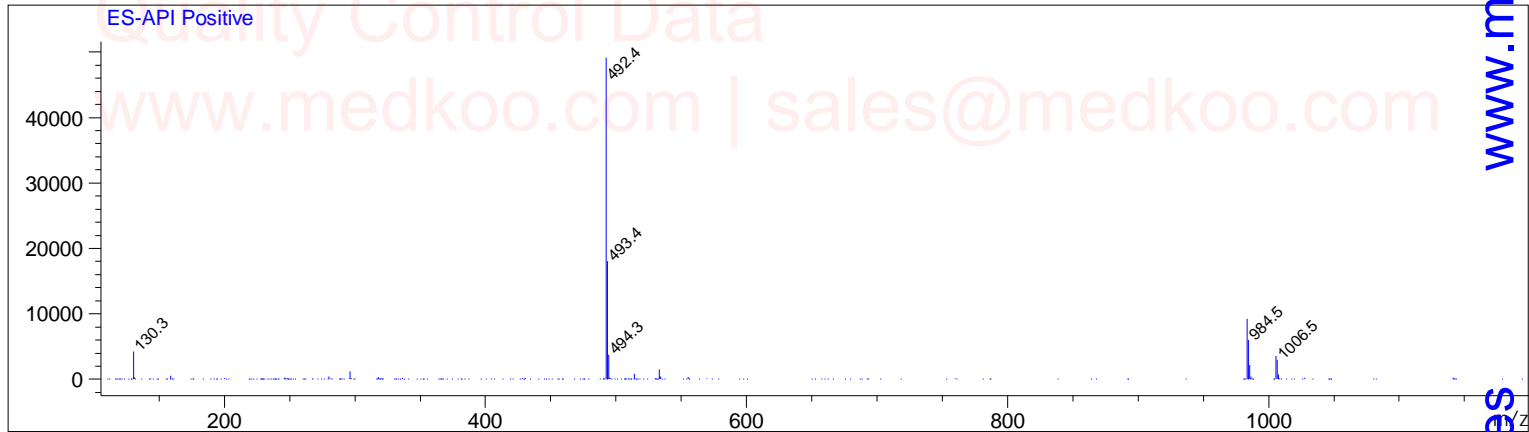
MedKoo Cat#: 329647  
 Name: Bardoxolone  
 CAS#: 218600-44-3  
 Lot#: T21D04P29  
 Chemical Formula: C<sub>31</sub>H<sub>41</sub>NO<sub>4</sub>  
 Exact Mass: 491.3036  
 Molecular Weight: 491.67

# Bardoxolone LC/MS Analysis

Sample Name : Bardoxolone Location : P2-E-03  
Acq. Operator : Inj : 1  
Spec. Reported : MS Integration Inj Volume : 2 ul  
Acq. Method : D:\METHODS\1-POS-3MIN.M  
Analysis Method : D:\METHODS\1-POS-3MIN.M  
Sample Info : Easy-Access Method: '1-POS-3MIN.M'  
Method Info : Mobile Phase: A: water(0.01%TFA) B: ACN(0.01%TFA)  
Gradient: 5%B increase to 95%B within 1.3 min, 95%B for 1.7 min.  
Flow Rate: 2.0ml/min  
Column: Sunfire C18, 4.6\*50mm, 3.5um  
Column Temperature: 50 C  
Detection: UV(214,4nm) and MS(ESI, Pos mode, 110 to 1200 amu)



Ret. Time: 2.00 <<<< POSITIVE SPECTRA >>>>



MedKoo Cat#: 329647  
Name: Bardoxolone  
CAS#: 218600-44-3  
Lot#: T21D04P29  
Chemical Formula: C<sub>31</sub>H<sub>41</sub>NO<sub>4</sub>  
Exact Mass: 491.3036  
Molecular Weight: 491.67