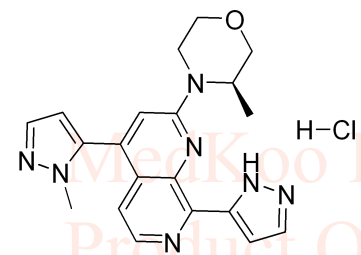


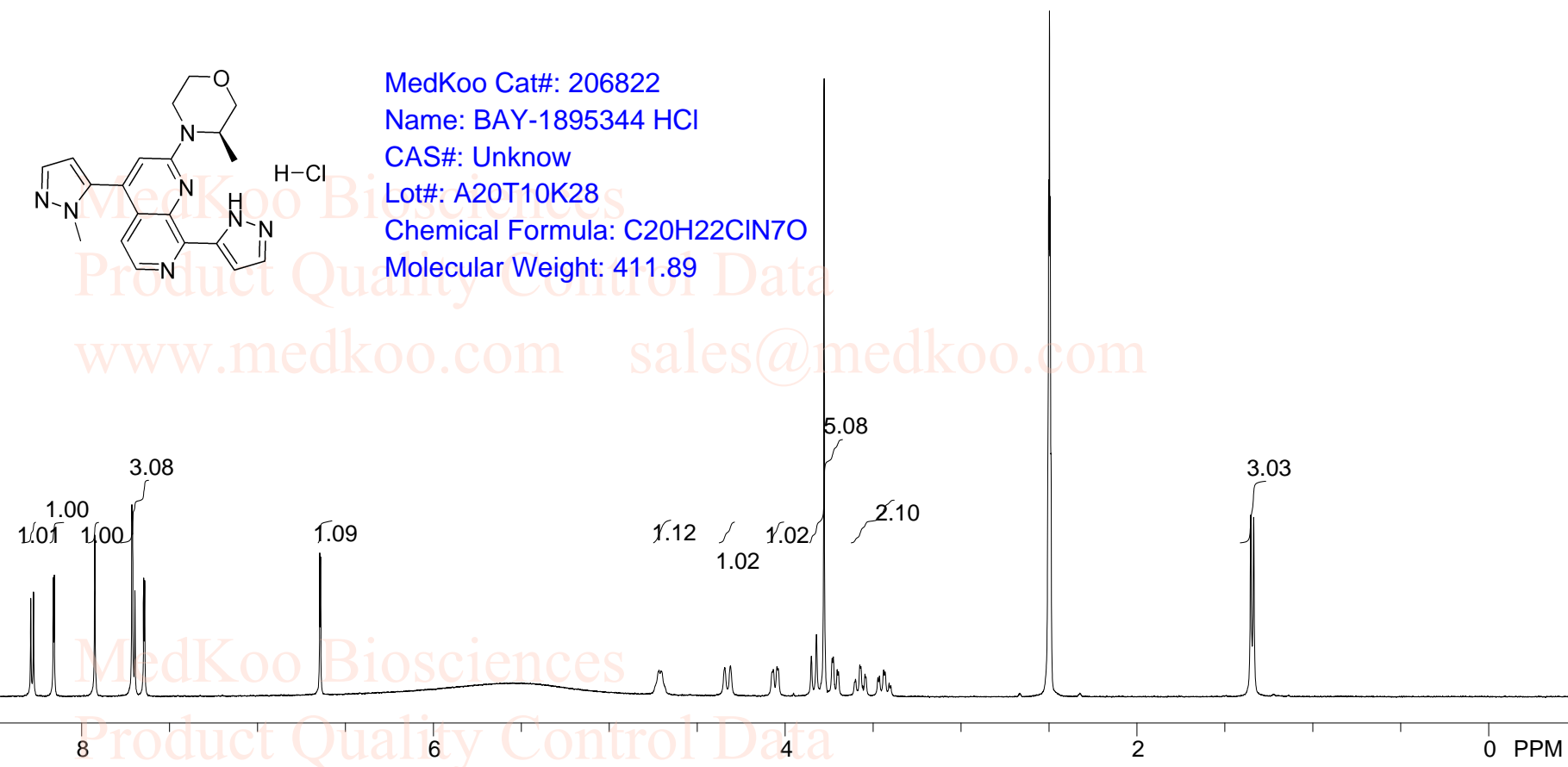
8.289 8.273 8.160 8.155 7.925 7.714 7.709 7.697 7.647 7.641 6.645 6.641 4.717 4.704 4.343 4.310 4.073 4.066 4.046 4.039 3.851 3.821 3.778 3.732 3.725 3.703 3.695 3.575 3.569 3.546 3.439 3.432 2.502 2.497 2.493 2.488 1.353 1.337

# BAY-1895344 HCl HNMR Analysis, Solvent: DMSO

MedKoo Biosciences  
 Product Quality Control Data  
 www.medkoo.com sales@medkoo.com



MedKoo Cat#: 206822  
 Name: BAY-1895344 HCl  
 CAS#: Unknow  
 Lot#: A20T10K28  
 Chemical Formula: C<sub>20</sub>H<sub>22</sub>CIN<sub>7</sub>O  
 Molecular Weight: 411.89



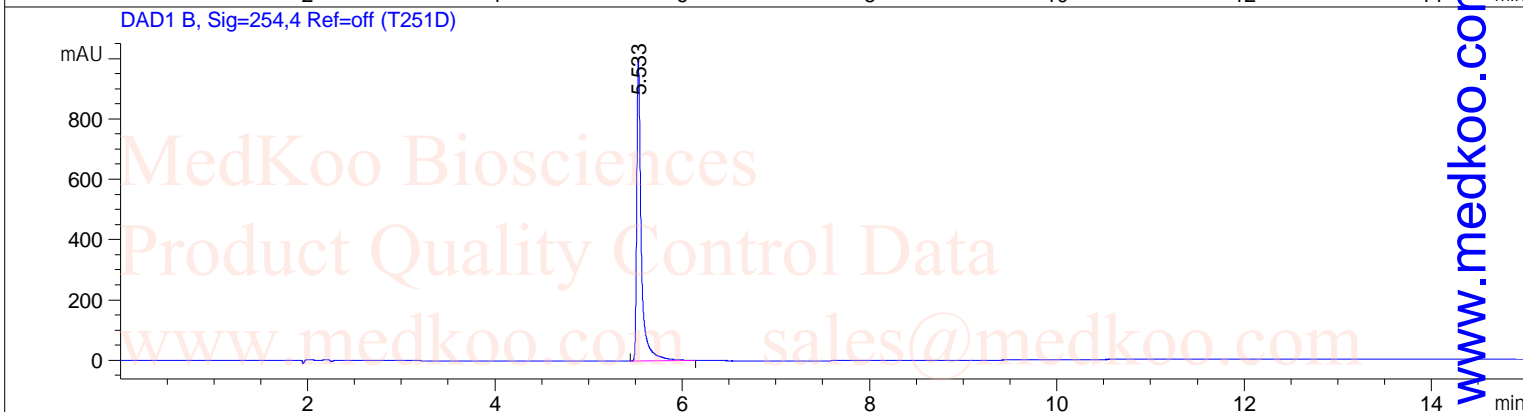
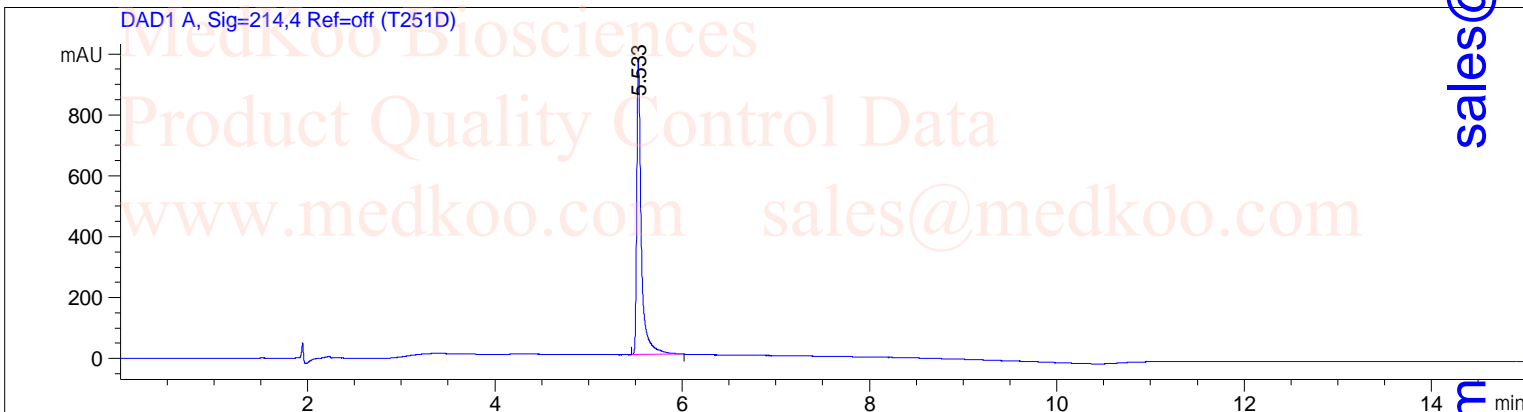
MedKoo Biosciences  
 Product Quality Control Data  
 www.medkoo.com sales@medkoo.com

NMRB003, DMSO, 10 8 6 4 2 0 PPM

F1: 400.232	F2: 1.000	SW1: 8224	OF1: 2471.0	PTS1d: 32768
EX: zg30		PD: 1.00 sec	LB: 0.0	Nuts - \$pdata

# BAY-1895344 HCl HPLC Analysis

=====  
 Acq. Operator : Location : P2-C-02  
 Acq. Instrument : HPLC Inj Volume : 1.0 µl  
 : C:\CHEM32\1\METHODS\2-HPLC-15MIN.M  
 Method Info : Mobile Phase: A: water(0.05%TFA) B: ACN(0.05%TFA)  
 Gradient: 5% increase to 95%B within 8 min, 95%B for 7 min.  
 Flow Rate: 1.0ml/min  
 Column: Luna C18(2), 4.6\*150mm, 5µm  
 Column Temperature: 40 C  
 Sample Info : Easy-Access Method: '2-HPLC-15MIN'



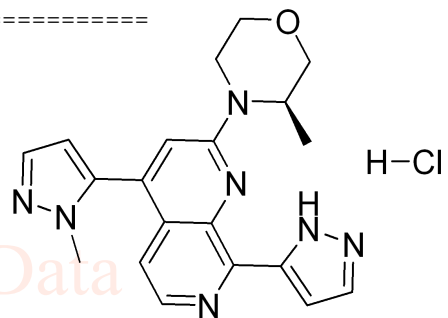
## Area Percent Report

=====  
 Sorted By : Signal  
 Multiplier : 1.0000  
 Dilution : 1.0000  
 Use Multiplier & Dilution Factor with ISTDs  
 Signal 1: DAD1 A, Sig=214,4 Ref=off

Peak #	RetTime [min]	Type	Width [min]	Area [mAU*s]	Height [mAU]	Area %
1	5.533	BB	0.0497	3325.20288	971.56348	100.0000
Totals :				3325.20288	971.56348	

Signal 2: DAD1 B, Sig=254,4 Ref=off

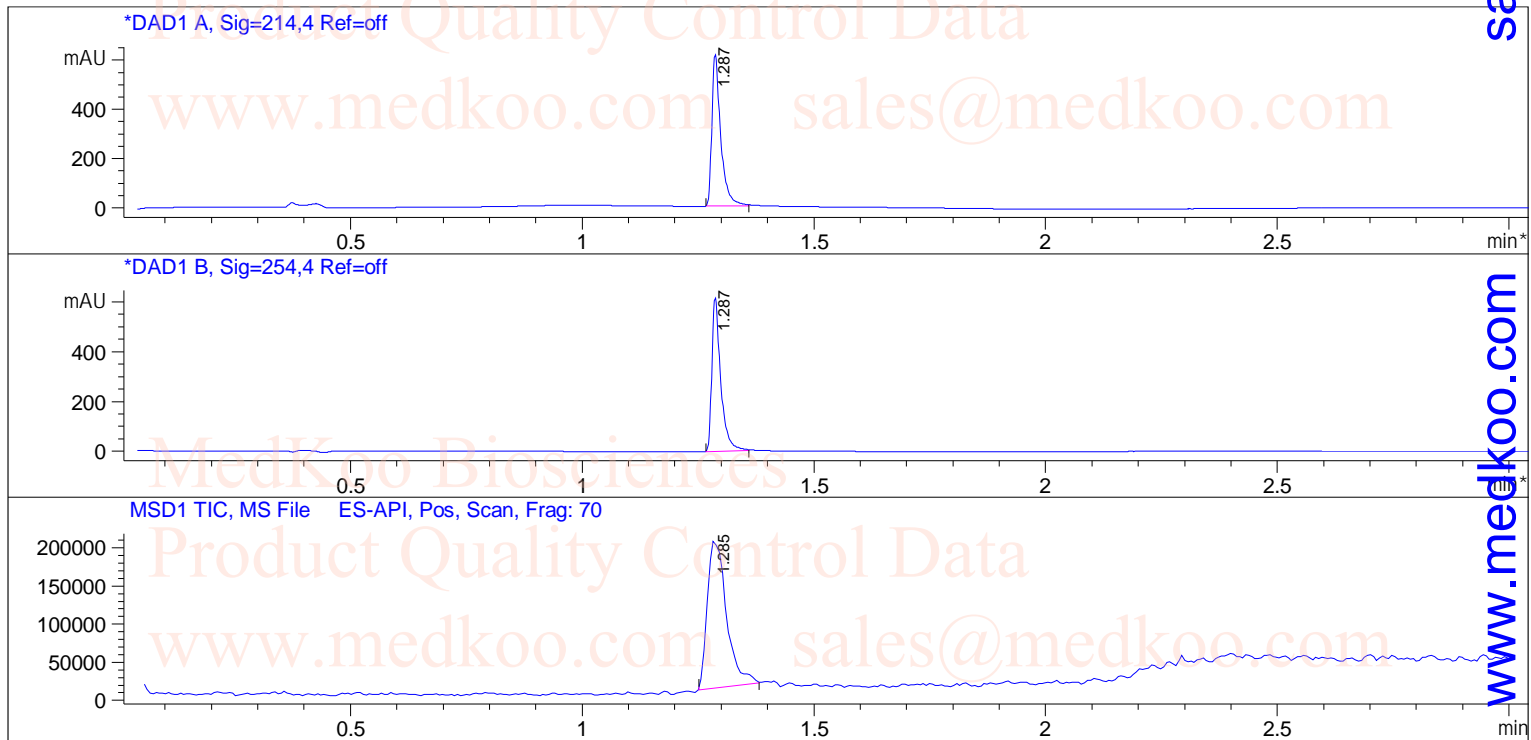
Peak #	RetTime [min]	Type	Width [min]	Area [mAU*s]	Height [mAU]	Area %
1	5.533	BB	0.0496	3427.51563	1003.02844	100.0000
Totals :				3427.51563	1003.02844	



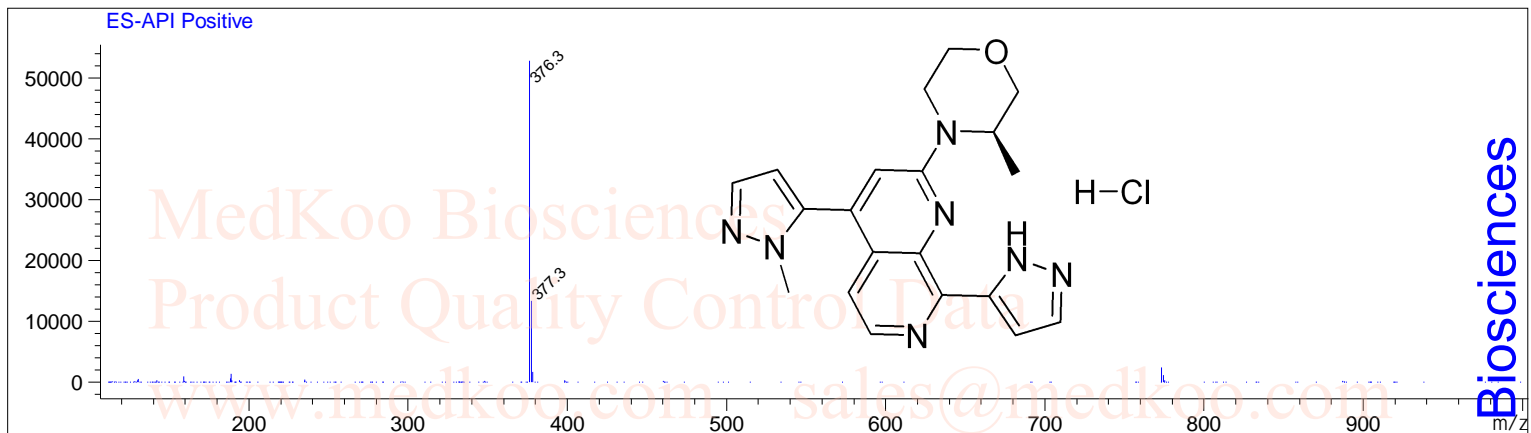
MedKoo Cat#: 206822  
 Name: BAY-1895344 HCl  
 CAS#: Unknow  
 Lot#: A20T10K28  
 Chemical Formula: C20H22ClN7O  
 Molecular Weight: 411.89

# BAY-1895344 HCl LC/MS Analysis

Sample Name : 1876467-74-1-B Tgt Mass(EZX) :  
Acq. Operator : Location : P2-B-07  
Spec. Reported : MS Integration Inj : 1  
Acq. Method : D:\METHODS\1-POS-3MIN.M Inj Volume : 1 ul  
Analysis Method : D:\METHODS\1-POS-3MIN.M  
Sample Info : Easy-Access Method: '1-POS-3MIN.M'  
Method Info : Mobile Phase: A: water(0.01%TFA) B: ACN(0.01%TFA)  
Gradient: 5%B increase to 95%B within 1.3 min, 95%B for 1.7 min.  
Flow Rate: 2.0ml/min  
Column:Sunfire C18,4.6\*50mm,3.5um  
Column Temperature: 50 C  
Detection:UV(214,4nm) and MS(ESI,Pos mode,110 to 1000 amu)



Ret. Time: 1.29 <<<< POSITIVE SPECTRA >>>>



MedKoo Cat#: 206822  
Name: BAY-1895344 HCl  
CAS#: Unknow  
Lot#: A20T10K28  
Chemical Formula: C20H22ClN7O  
Molecular Weight: 411.89