

Avadomide free base HNMR Analysis, Solvent = DMSO

— 10.984

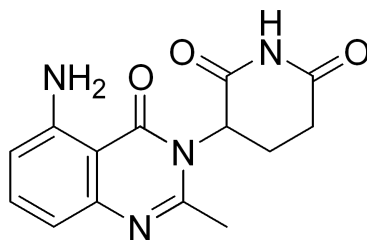
7.387
7.367
7.347
7.024
6.609
6.590
6.580
6.560
5.173
5.159
5.145
5.131
3.351
2.892
2.839
2.832
2.793
2.736
2.649
2.639
2.607
2.604
2.562
2.541
2.512
2.508
2.503
2.157
2.141
2.131
1.995

Current Data Parameters
NAME CC-122
EXPNO 10
PROCNO 1
F2 - Acquisition Parameters

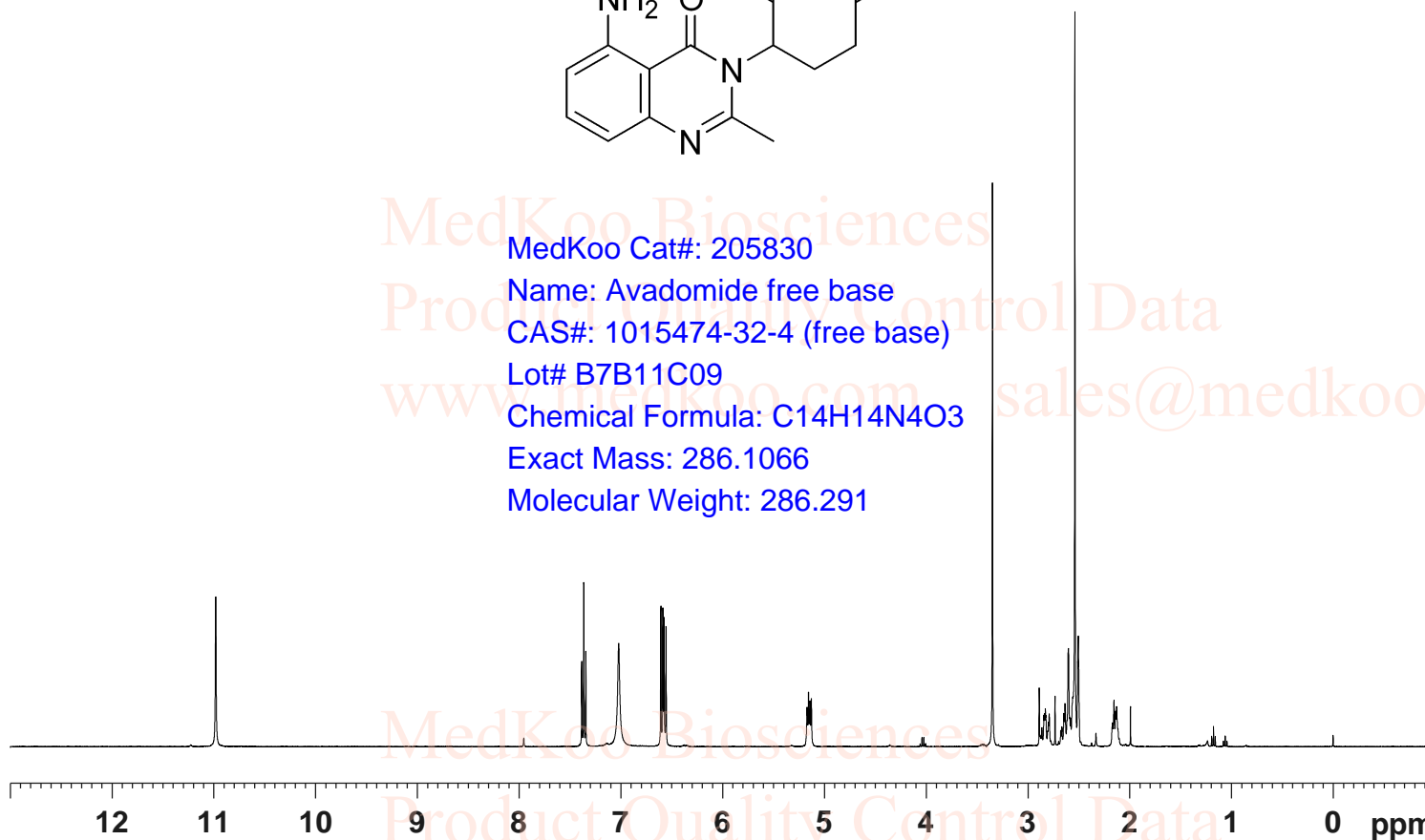
INSTRUM spect
PROBHD 5 mm PABBO BB-
PULPROG zg30
TD 65536
SOLVENT DMSO
NS 16
DS 2
SWH 8012.820 Hz
FIDRES 0.122266 Hz
AQ 4.0894465 sec
RG 114
DW 62.400 usec
DE 6.50 usec
TE 297.9 K
D1 1.00000000 sec
TD0 1

==== CHANNEL f1 =====
SFO1 400.1324710 MHz
NUC1 1H
P1 13.00 usec
PLW1 19.00000000 W

F2 - Processing parameters
SI 65536
SF 400.1300000 MHz
WDW no
SSB 0
LB 0 Hz
GB 0
PC 1.00

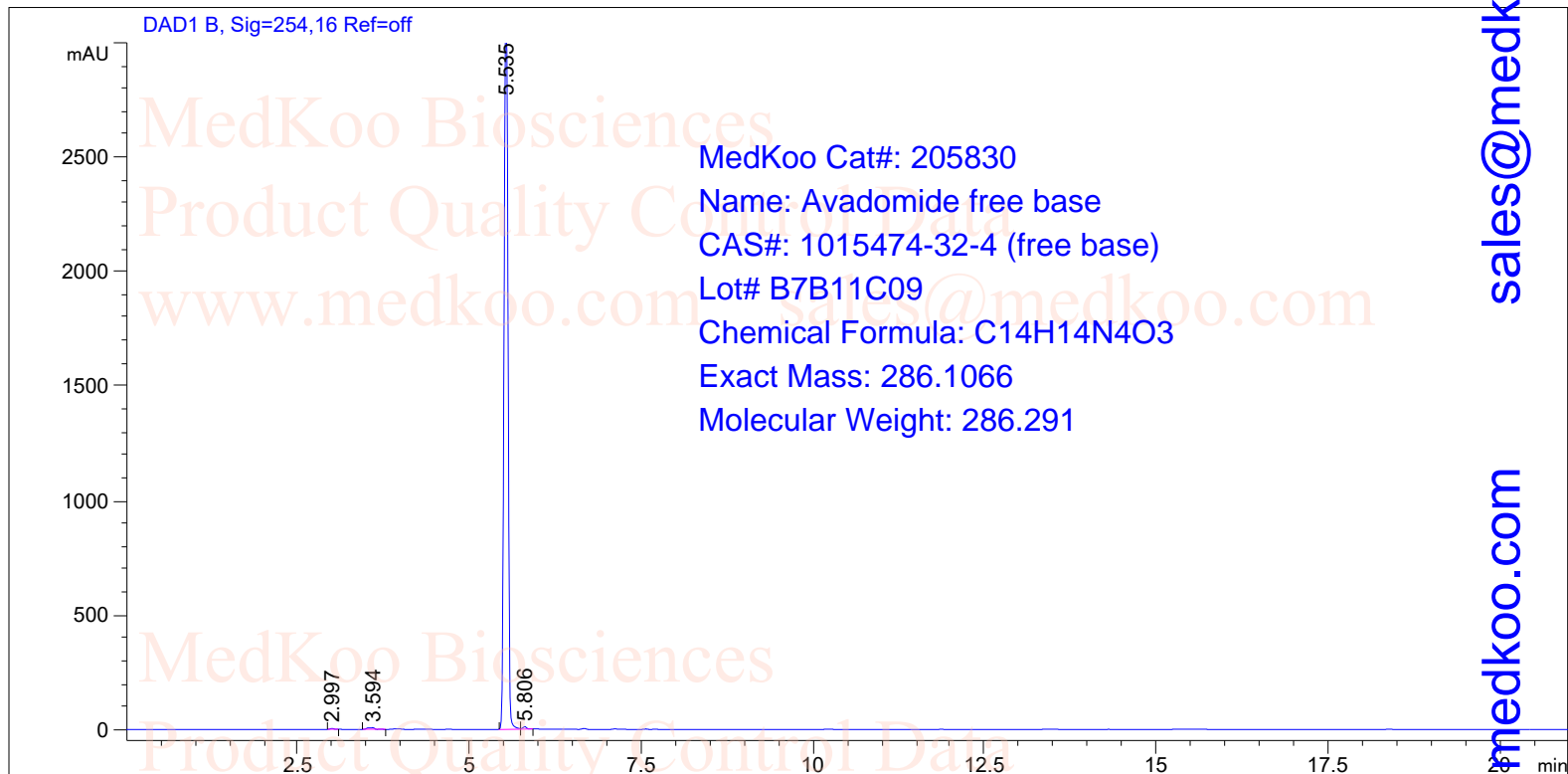


MedKoo Cat#: 205830
Name: Avadomide free base
CAS#: 1015474-32-4 (free base)
Lot# B7B11C09
Chemical Formula: C₁₄H₁₄N₄O₃
Exact Mass: 286.1066
Molecular Weight: 286.291



Avadomide free base HPLC Analysis

User : Sequence : 6
 Instrument : Instrument 1 Local : Vial 39
 Acq. Method : C:\CHEM32\1\DATA\Normal.M Injection # : 1
 Analysis Method : C:\CHEM32\1\METHODS\Normal.M Injection volume : 2.0 µl

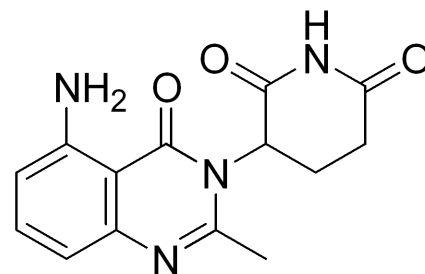


Integration Results

Signal 1: DAD1 B, Sig=254,16 Ref=off

Peak #	RetTime [min]	Type	Width [min]	Area [mAU*s]	Height [mAU]	Area %
1	2.997	BB	0.0577	13.64291	3.64057	0.1051
2	3.594	BB	0.0946	50.86407	7.18026	0.3920
3	5.535	BB	0.0624	1.28731e4	3384.21973	99.2127
4	5.806	BB	0.0559	37.64454	10.49358	0.2901

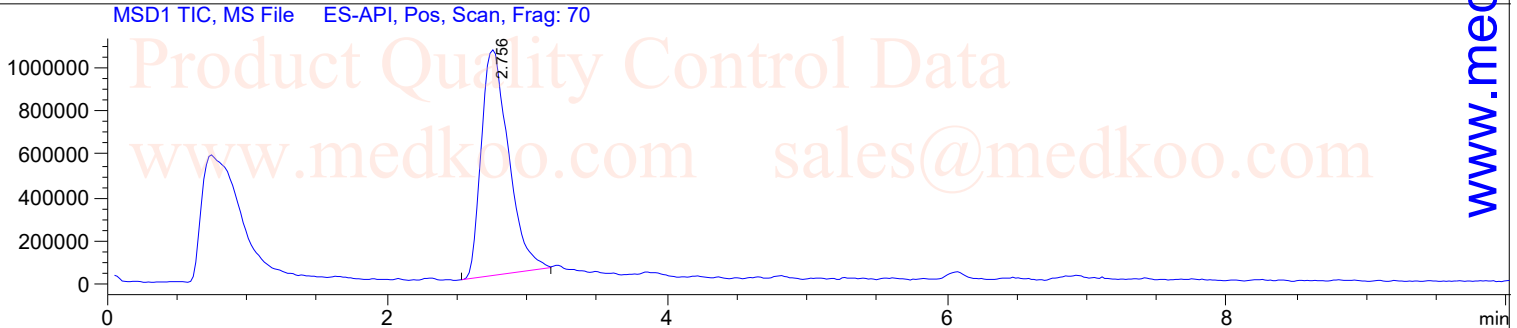
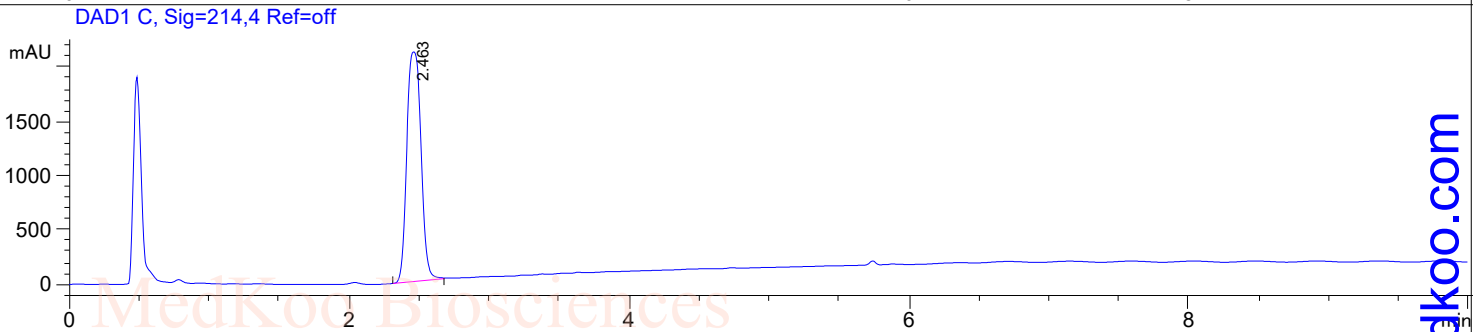
Total : 1.29753e4 3405.53413



Avadomide free base LC/MS Analysis

Sample Name : cc-122
Acq. Operator : sqb
Spec. Reported : MS Integration
Acq. Method : d:\Chem32\1\METHODS\TEST KR POS-B.M
Analysis Method : D:\CHEM32\1\METHODS\TEST KR POS-B.M

Tgt Mass (EZX) :
Location : Vial 82
Inj : 1
Inj Volume : 5 ul



Ret. Time: 2.76 <<<< POSITIVE SPECTRA >>>>

