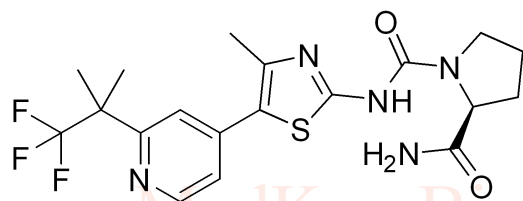


Alpelisib HNMR Analysis, Solvent = DMSO-d6

www.medkoo.com sales@medkoo.com



MedKoo Cat#: 204780

Name: Alpelisib

CAS#: 1217486-61-7

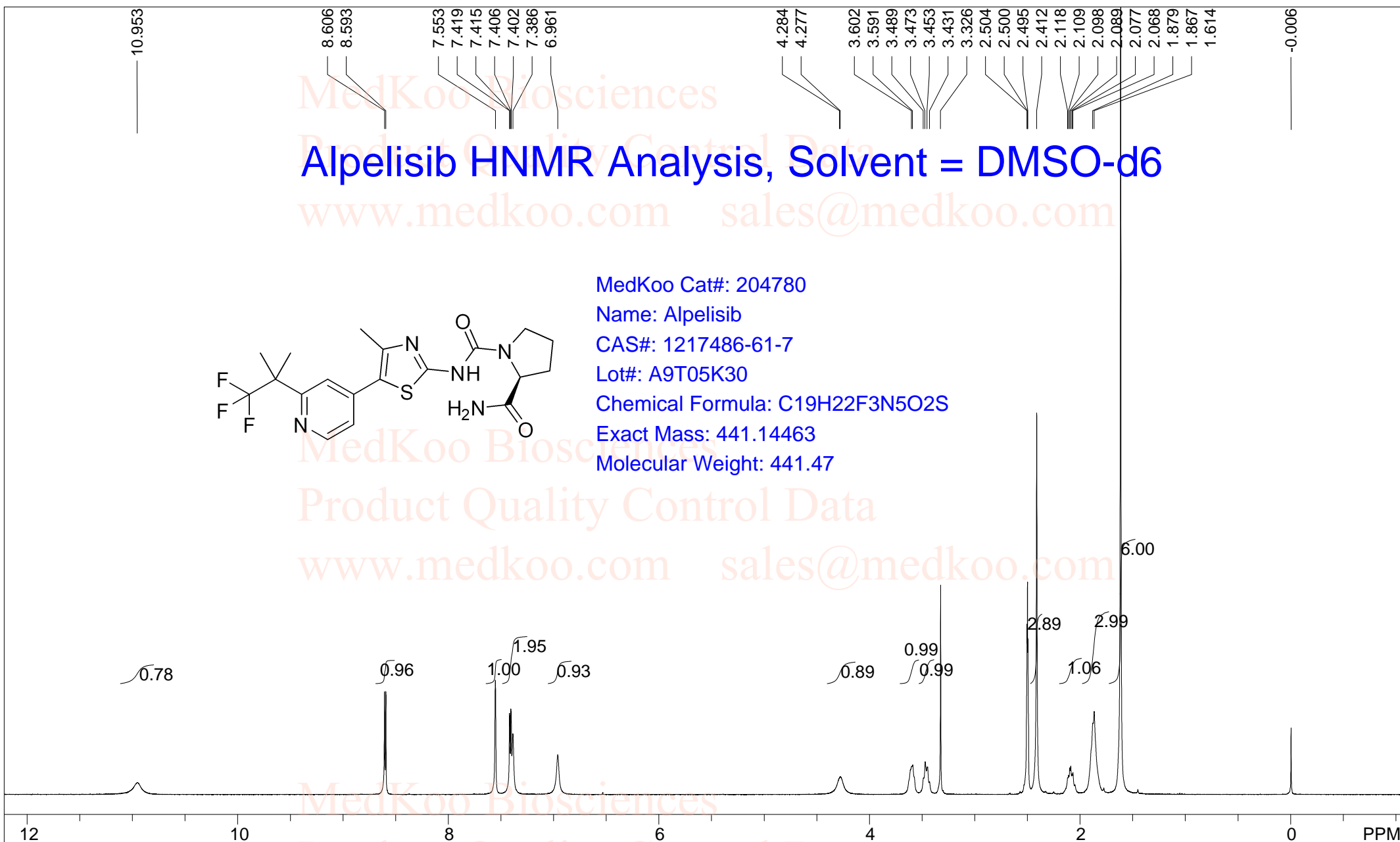
Lot#: A9T05K30

Chemical Formula: C₁₉H₂₂F₃N₅O₂S

Exact Mass: 441.14463

Molecular Weight: 441.47

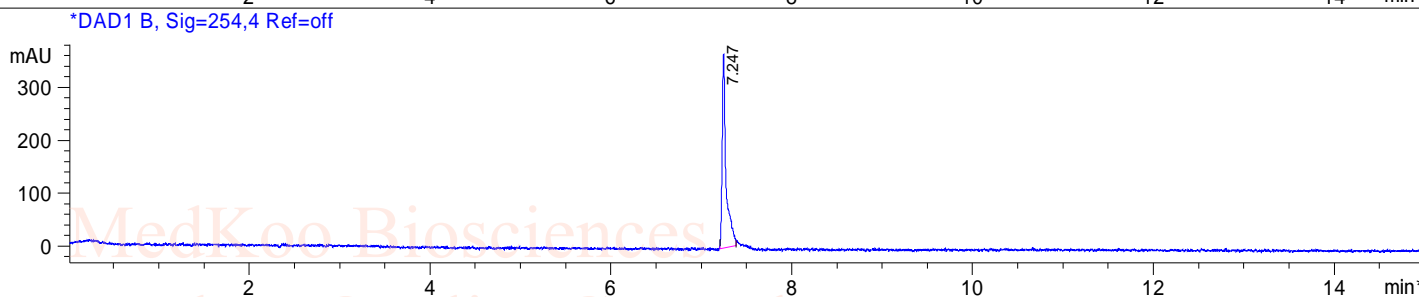
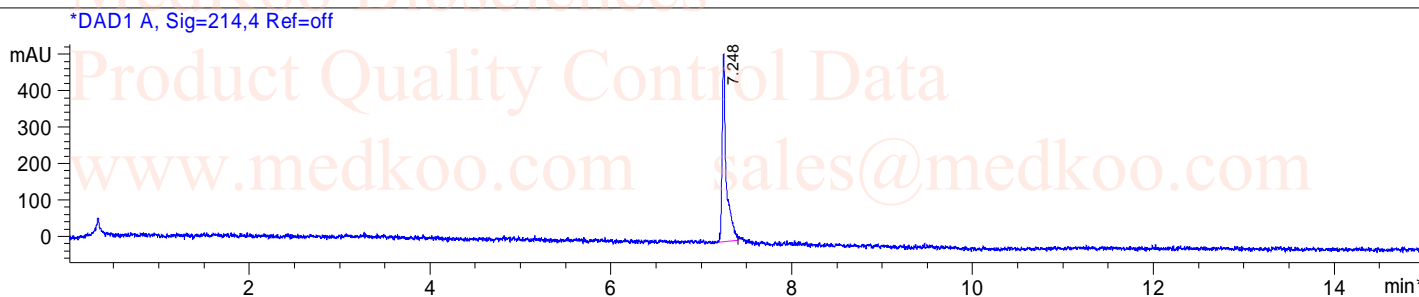
www.medkoo.com sales@medkoo.com



DMSO,							
F1: 400.132	F2: 1.000	SW1: 8224		OF1: 2467.6		PTS1d: 65536	
EX: zg30		PW: 15.0 usec	PD: 1.0 sec	NA: 8	LB: 0.0		Nuts - \$pdata

Alpelisib HPLC Analysis

Sample Name : 1217486-61-7
Acq. Method : D:\METHODS\1-POS-15MIN.M
Analysis Method : D:\METHODS\1-POS-15MIN.M
Sample Info : Easy-Access Method: '1-POS-15MIN.M'
Method Info : Mobile Phase: A: Water (0.01%TFA) B: ACN (0.01%TFA)
Gradient: 5%B increase to 95%B within 8 min,
hold for 7 min, back to 5%B within 0.01 min.
Flow Rate: 1 mL/min
Column: Xbridge C18, 4.6*150 mm, 3.5 µm
Column Temperature: 40 °C

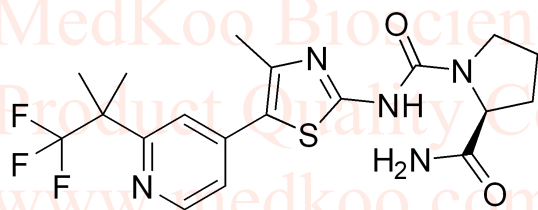


Integration Results for DAD1 A, Sig=214,4 Ref=off

RetTim	Width	Area	Height	Area%
7.25	0.04	1612.76	513.92	100.00

Integration Results for DAD1 B, Sig=254,4 Ref=off

RetTim	Width	Area	Height	Area%
7.25	0.04	1100.14	366.11	100.00



MedKoo Cat#: 204780

Name: Alpelisib

CAS#: 1217486-61-7

Lot#: A9T05K30

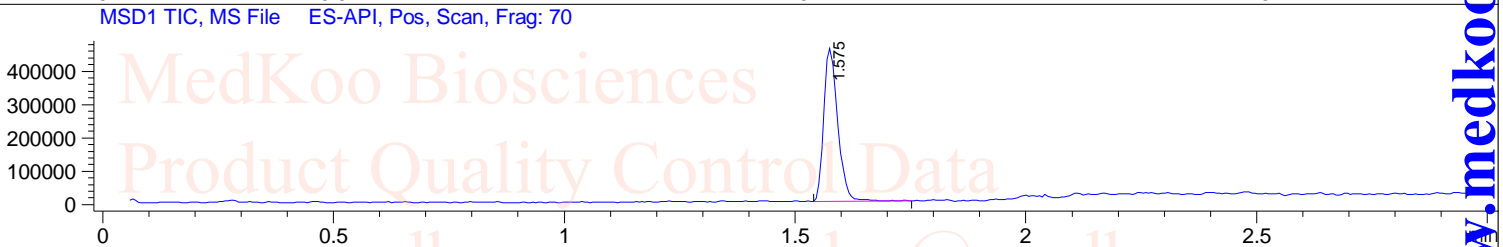
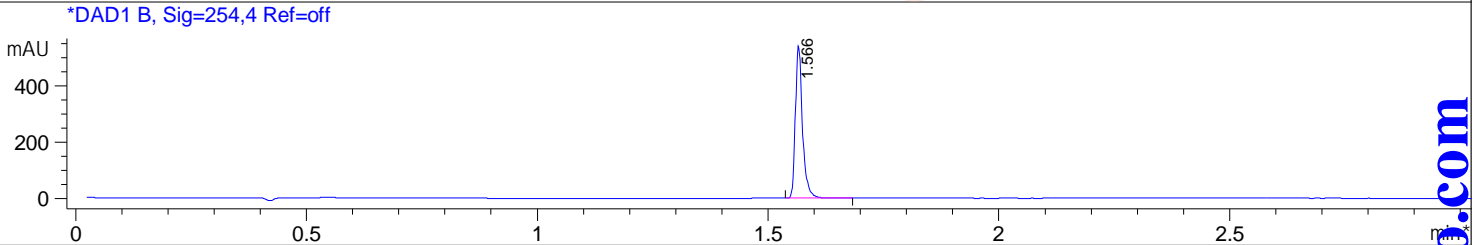
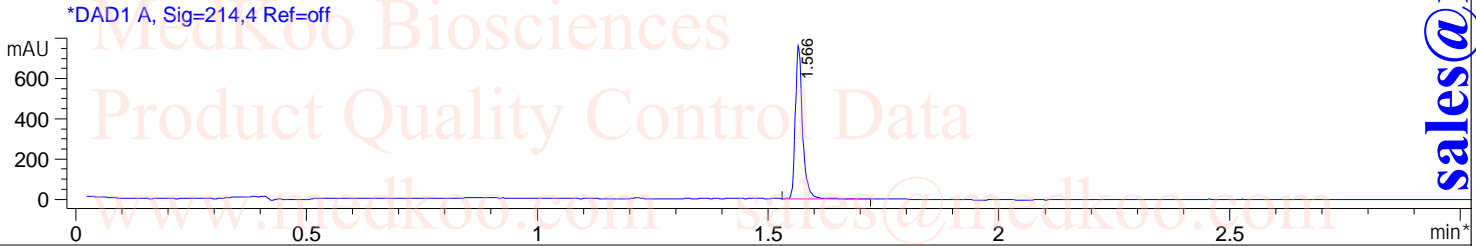
Chemical Formula: C₁₉H₂₂F₃N₅O₂S

Exact Mass: 441.14463

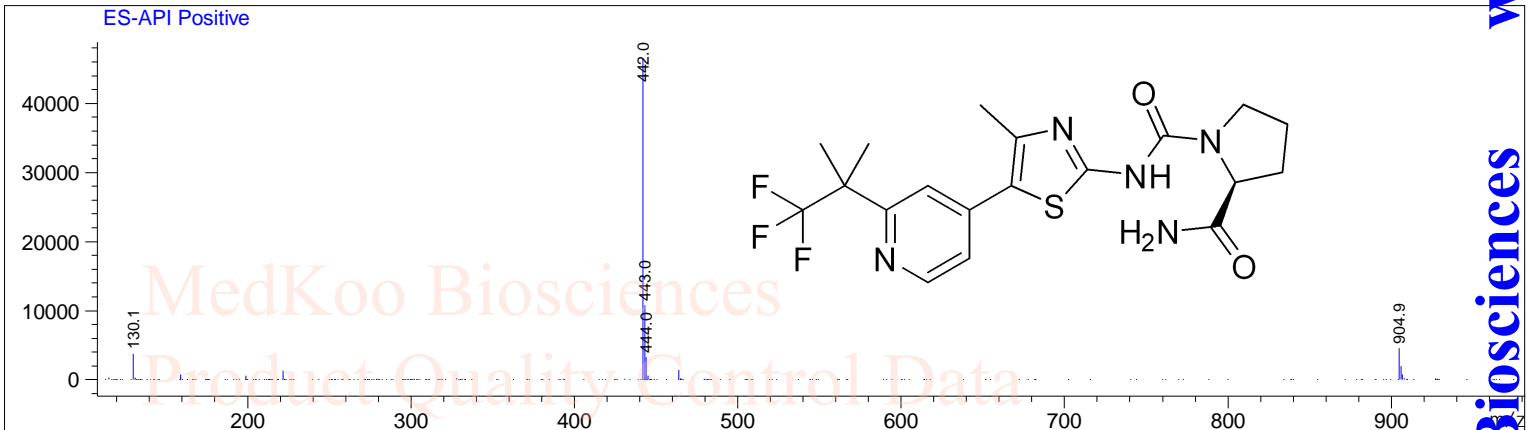
Molecular Weight: 441.47

Alpelisib LC/MS Analysis

Sample Name : 1217486-61-7
Analysis Method : D:\METHODS\1-POS-3MIN.M
Sample Info : Easy-Access Method: '1-POS-3MIN'
Method Info : Mobile Phase: A: water(0.01%TFA) B: ACN(0.01%TFA)
Gradient: 5% increase to 95%B within 1.3 min, 95%B for 1.7 min.
Flow Rate: 2.0ml/min
Column:Sunfire C18,4.6*50mm,3.5um
Column Temperature: 45 C
Detection:UV(214,4nm) and MS(ESI,Pos mode,110 to 1000 amu)



Ret. Time: 1.57 <<<< POSITIVE SPECTRA >>>>



MedKoo Cat#: 204780

Name: Alpelisib

CAS#: 1217486-61-7

Lot#: A9T05K30

Chemical Formula: C₁₉H₂₂F₃N₅O₂S

Exact Mass: 441.14463

Molecular Weight: 441.47