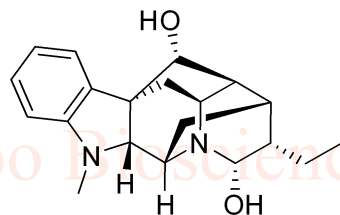


Ajmaline HNMR Analysis, Solvent: CDCl3

MedKoo Biosciences
Product Quality Control Data
www.medkoo.com sales@medkoo.com



MedKoo Cat#: 329405

Name: Ajmaline

CAS#: 4360-12-7 (free base)

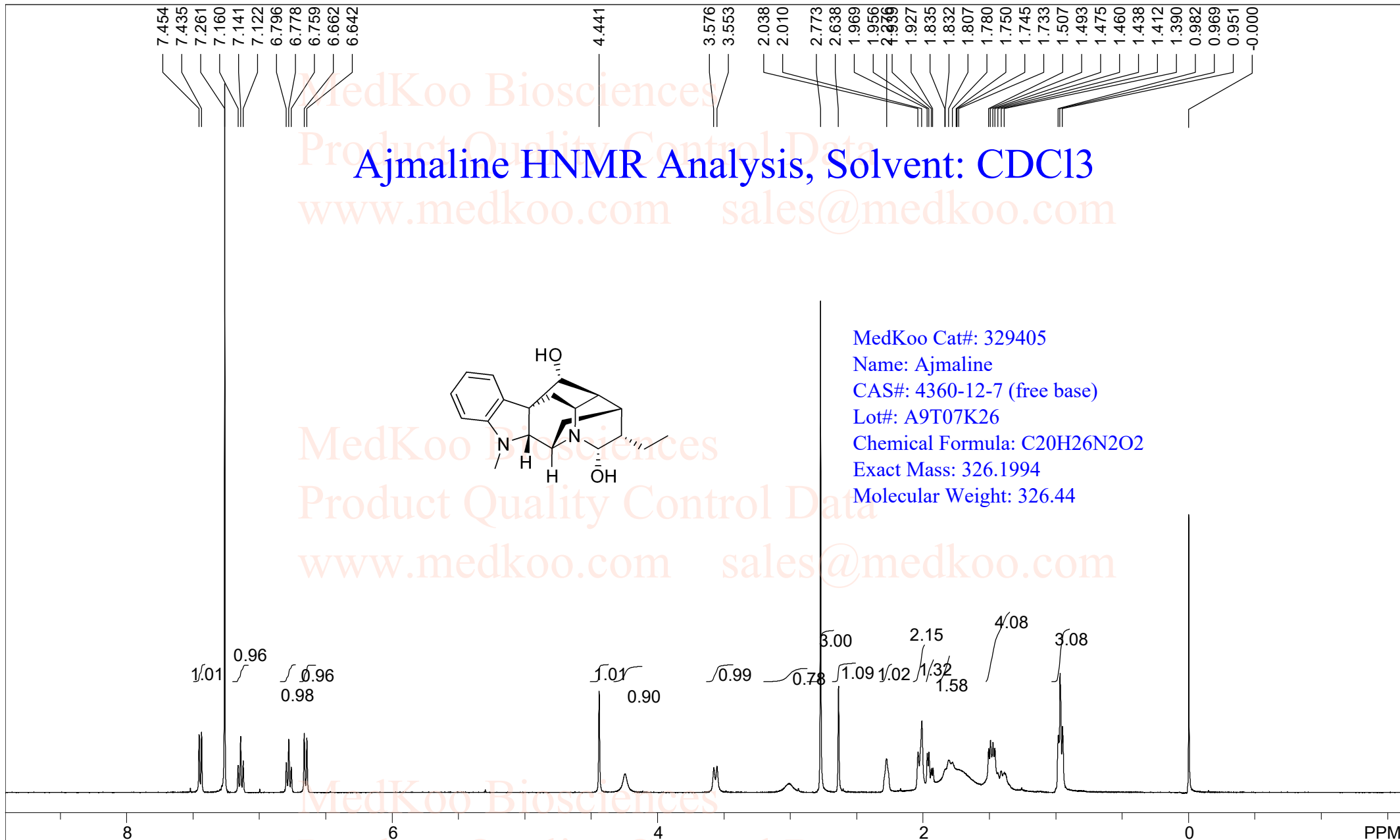
Lot#: A9T07K26

Chemical Formula: C₂₀H₂₆N₂O₂

Exact Mass: 326.1994

Molecular Weight: 326.44

MedKoo Biosciences
Product Quality Control Data
www.medkoo.com sales@medkoo.com



spect, CDCl3, 4360-12-7

F1: 400.132	F2: 1.000	SW1: 8224	PD: 1.0 sec	OF1: 2461.5	PTS1d: 65536	
EX: zg30		PW: 15.0 usec	NA: 8	LB: 0.0		Nuts - \$pdata

MedKoo Biosciences

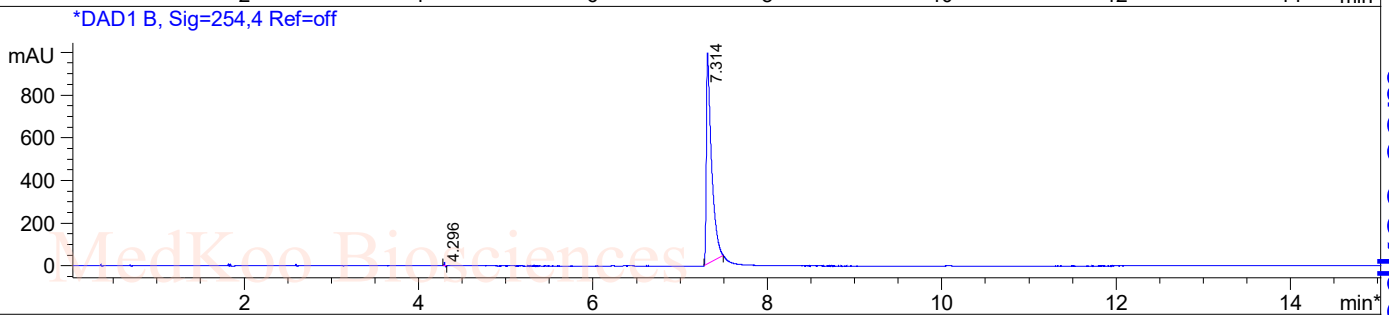
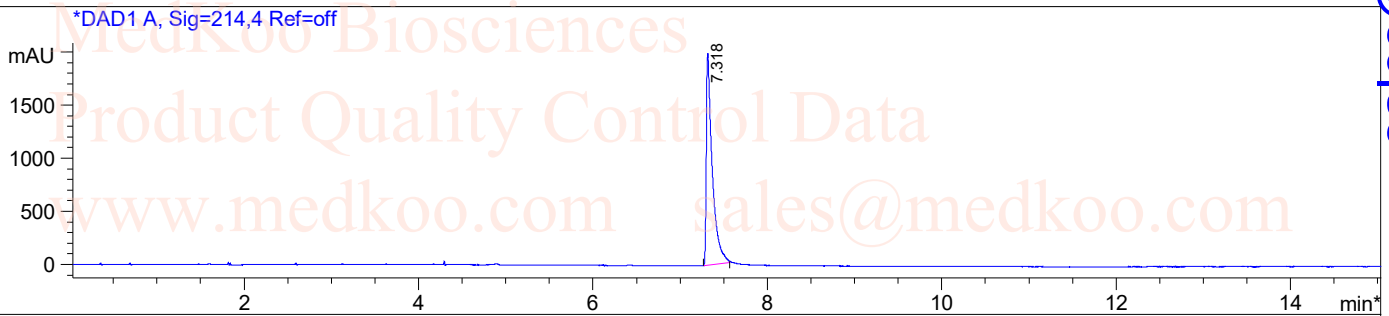
www.medkoo.com

sales@medkoo.com

Ajmaline HPLC Analysis Report

Sample Name : 4360-12-7

Method Info : Mobile Phase: A: water (10mM Ammonium hydrogen carbonate) B: ACN
 Gradient: 0min 5%B, 3min 5%B, 10min 95%B, 15min 95% B
 Flow Rate: 1ml/min
 Column: XBridge C18, 4.6*150mm, 3.5um
 Oven Temperature: 45 C
 MASS Range: 110-1000

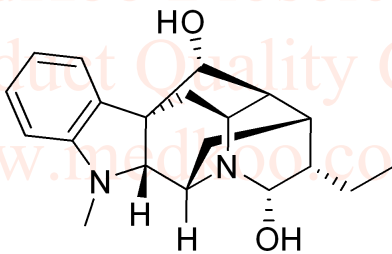


Integration Results for DAD1 A, Sig=214,4 Ref=off

RetTim	Width	Area	Height	Area%
7.32	0.06	9412.10	1993.46	100.00

Integration Results for DAD1 B, Sig=254,4 Ref=off

RetTim	Width	Area	Height	Area%
4.30	0.01	5.95	16.02	0.15
7.31	0.06	4076.81	986.09	99.85



MedKoo Cat#: 329405

Name: Ajmaline

CAS#: 4360-12-7 (free base)

Lot#: A9T07K26

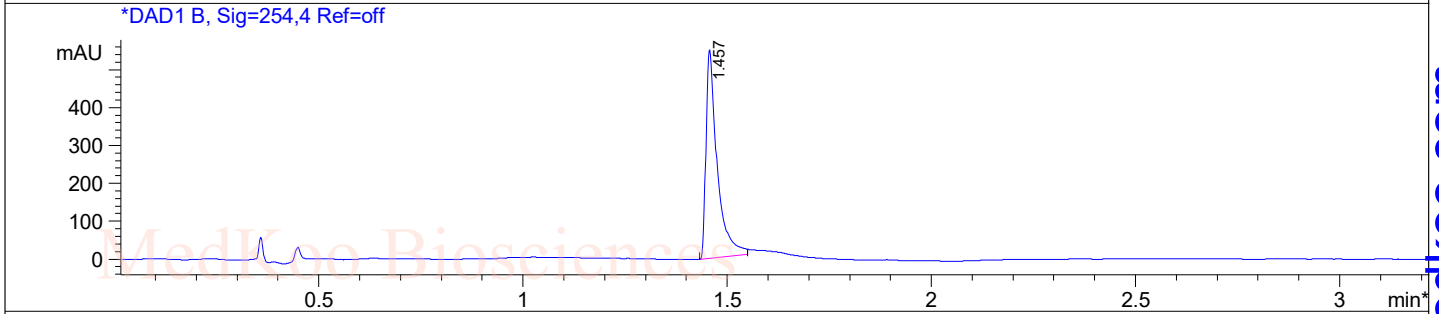
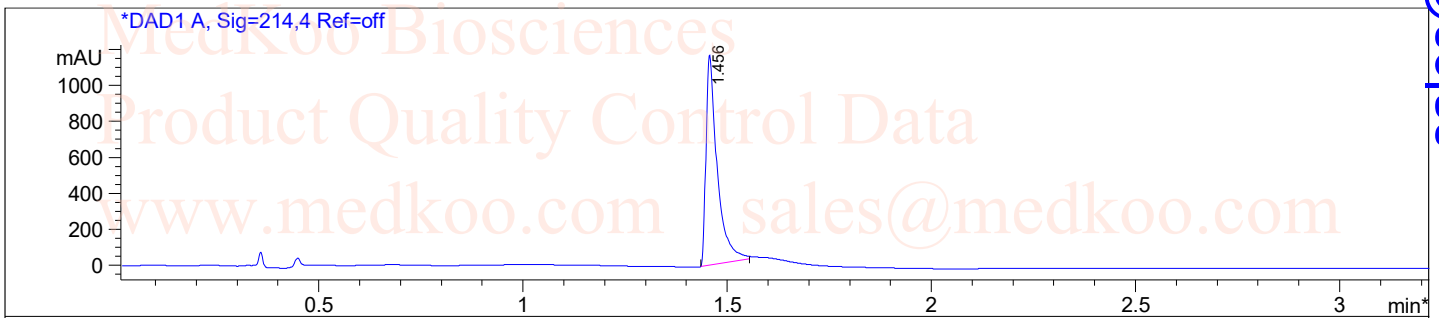
Chemical Formula: C₂₀H₂₆N₂O₂

Exact Mass: 326.1994

Molecular Weight: 326.44

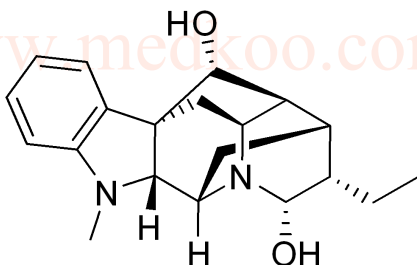
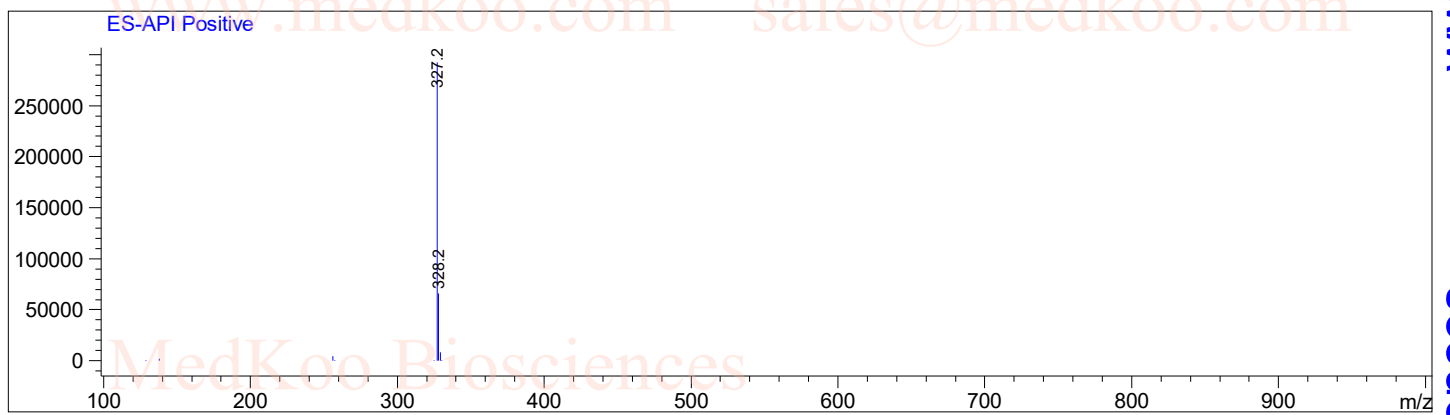
Ajmaline LC/MS Analysis Report

Sample Name : 4360-12-7
Method Info : Column: XBridge (4.6x 50 mm, 3.5um)
Mobile phase: H2O(10 mmol NH4HCO3) (A) / ACN(B)
Elution program: Gradient from 10 to 95% of B in 1.4min at 1.8ml/min
Temperature: 50 °C
Detection: UV (214 , 4 nm) and MS (ESI, Pos mode , 103 to 1000 amu)



Ret. Time: 1.47

<<<< POSITIVE SPECTRA >>>>



MedKoo Cat#: 329405

Name: Ajmaline

CAS#: 4360-12-7 (free base)

Lot#: A9T07K26

Chemical Formula: C₂₀H₂₆N₂O₂

Exact Mass: 326.1994

Molecular Weight: 326.44

sales@medkoo.com

www.medkoo.com

MedKoo Biosciences