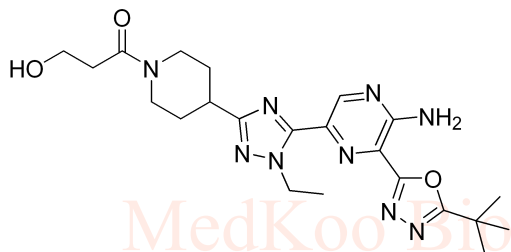


8.843

AZD-8835 HNMR Analysis, solvent: DMSO-d6

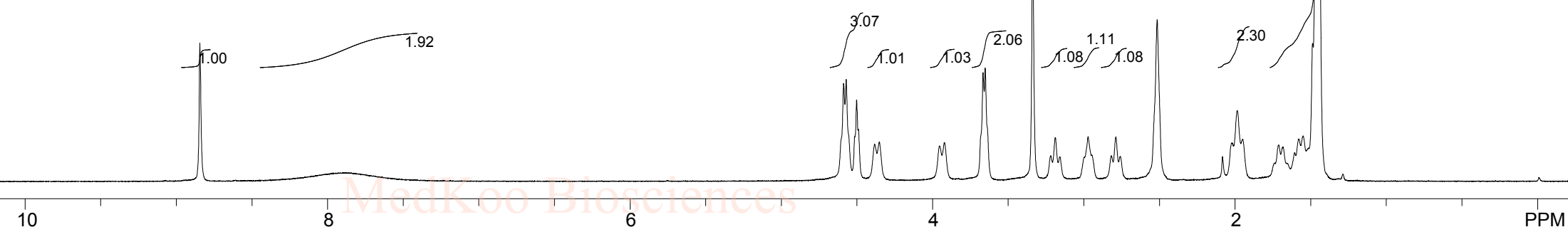
MedKoo Biosciences
Product Quality Control Data
www.medkoo.com sales@medkoo.com



MedKoo Cat#: 206479
 Name: AZD8835
 CAS#: 1620576-64-8
 Lot#: SSC70411
 Chemical Formula: C₂₂H₃₁N₉O₃
 Exact Mass: 469.25499
 Molecular Weight: 469.55

MedKoo Biosciences
Product Quality Control Data
www.medkoo.com sales@medkoo.com

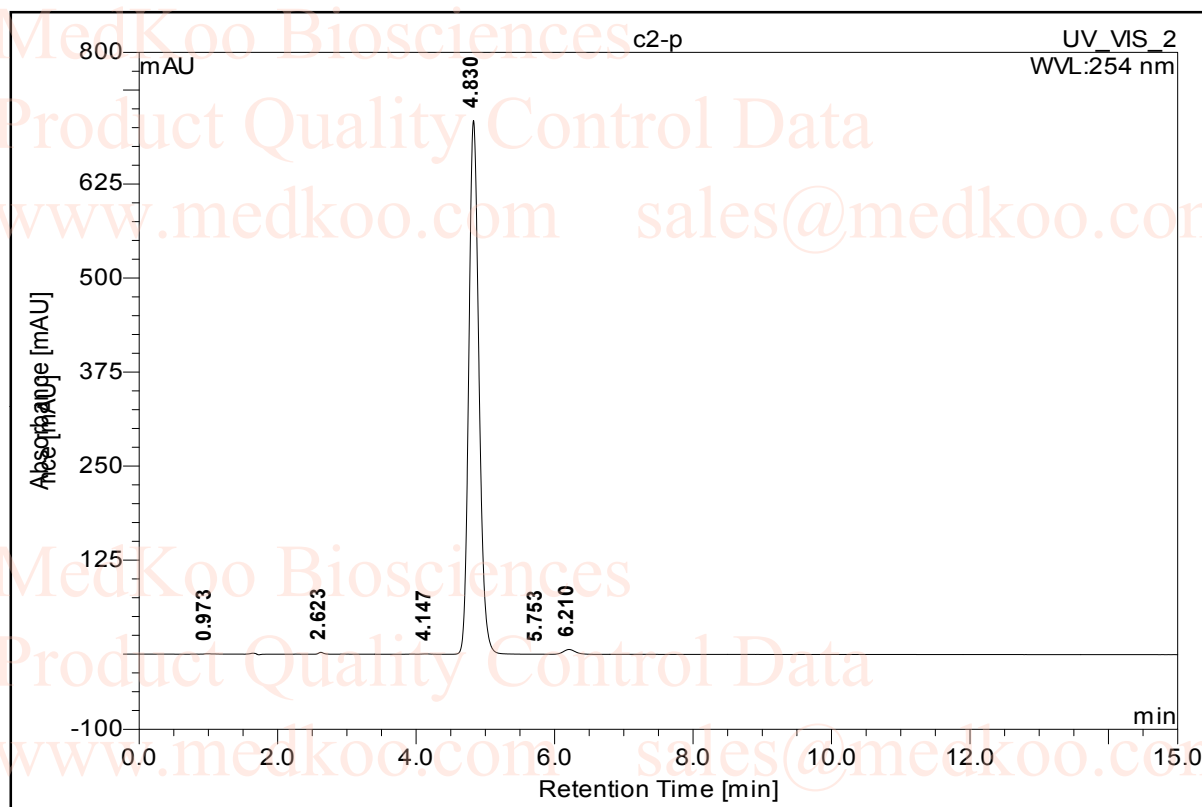
4.588
4.571
4.515
4.501
4.488
4.382
4.351
3.954
3.921
3.665
3.651
3.338
3.188
2.970
2.944
2.786
2.514
2.018
1.985
1.948
1.710
1.682
1.604
1.577
1.548
1.512
1.487
1.470
1.448



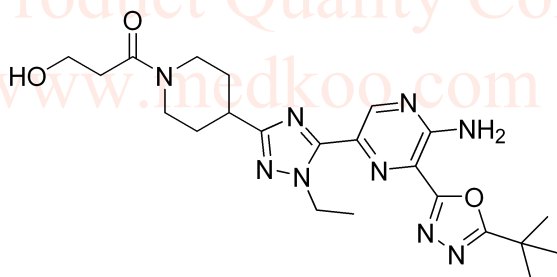
d6-DMSO, 400MHz							
F1: 399.796	F2: 100.538	SW1: 6410	OF1: 2416.9	PTS1d: 16384			
EX: s2pul	PW: 10.0 usec	PD: 1.0 sec	NA: 16	LB: 0.0			

AZD-8835 HPLC Analysis

Sample Name:	sun-shine01	Injection Volume:	10.0
Vial Number:	RE1	Channel:	UV_VIS_2
Sample Type:	unknown	Wavelength:	254
		Bandwidth:	4
Quantif. Method:	default	Dilution Factor:	1.0000
Run Time (min):	17.06	Sample Weight:	1.0000
		Sample Amount:	1.0000



No.	Ret.Time min	Peak Name	Height mAU	Area mAU*min	Rel.Area %	Amount n.a.	Type
1	0.97	n.a.	0.421	0.056	0.05	n.a.	BMB*
2	2.62	n.a.	2.444	0.201	0.16	n.a.	BMB*
3	4.15	n.a.	0.329	0.047	0.04	n.a.	BMB*
4	4.83	n.a.	709.694	121.008	98.70	n.a.	BMB*
5	5.75	n.a.	0.070	0.011	0.01	n.a.	bMB
6	6.21	n.a.	6.389	1.278	1.04	n.a.	BMB
Total:			719.347	122.600	100.00	0.000	



MedKoo Cat#: 206479

Name: AZD8835

CAS#: 1620576-64-8

Lot#: SSC70411

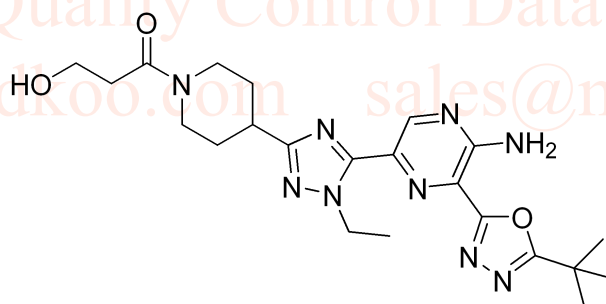
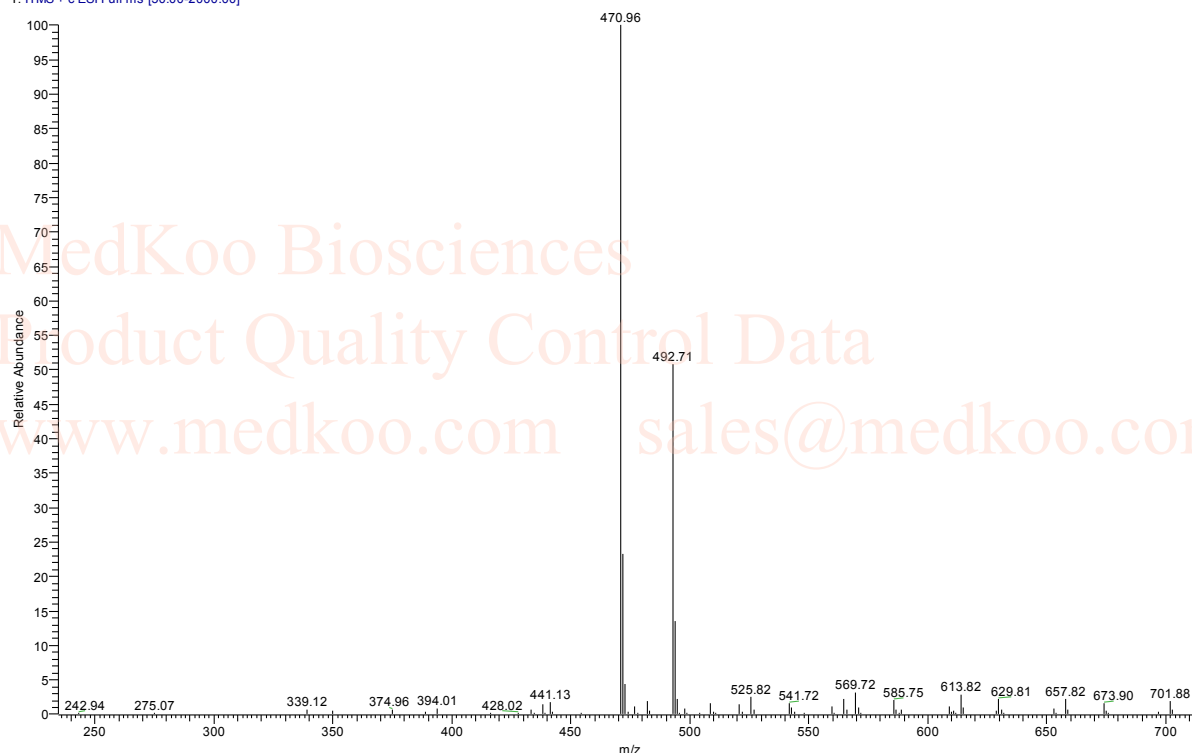
Chemical Formula: C₂₂H₃₁N₉O₃

Exact Mass: 469.25499

Molecular Weight: 469.55

AZD-8835 MS Analysis

A208835_170412120259 #94 RT: 0.92 AV: 1 NL: 1.32E5
T: ITMS + c ESI Full ms [50.00-2000.00]



MedKoo Cat#: 206479

Name: AZD8835

CAS#: 1620576-64-8

Lot#: SSC70411

Chemical Formula: C₂₂H₃₁N₉O₃

Exact Mass: 469.25499

Molecular Weight: 469.55