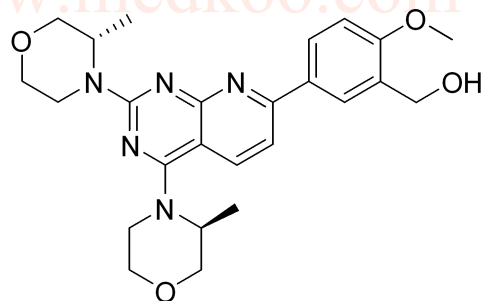
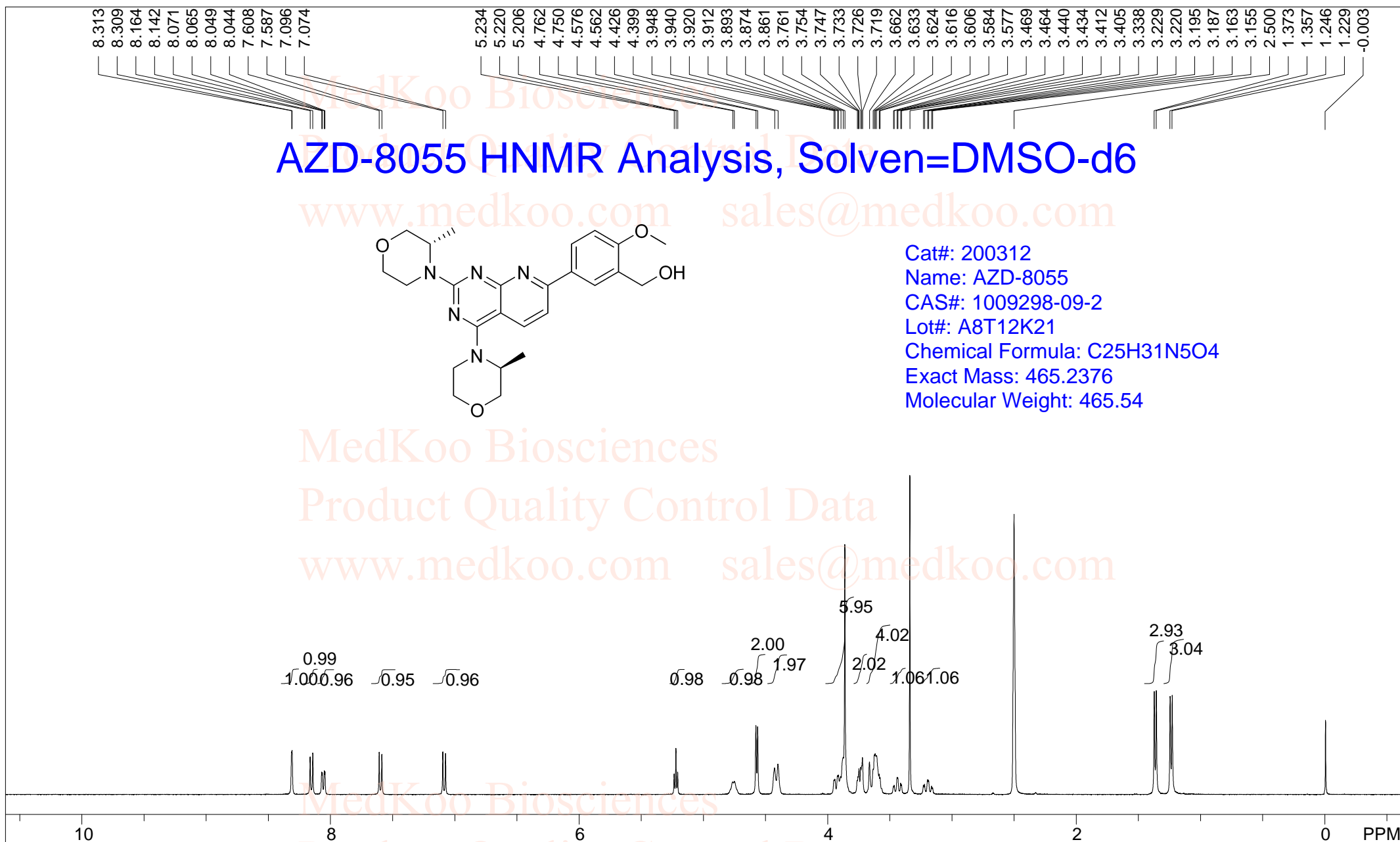


AZD-8055 HNMR Analysis, Solven=DMSO-d6



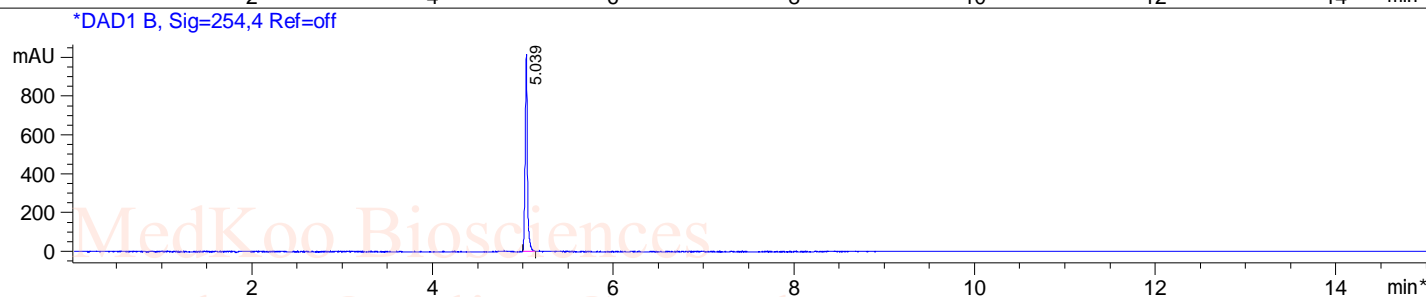
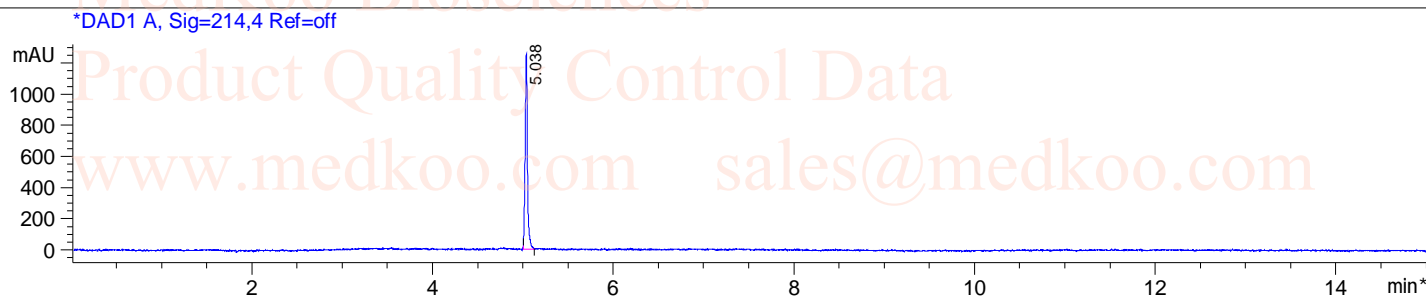
Cat#: 200312
 Name: AZD-8055
 CAS#: 1009298-09-2
 Lot#: A8T12K21
 Chemical Formula: C₂₅H₃₁N₅O₄
 Exact Mass: 465.2376
 Molecular Weight: 465.54



DMSO,							
F1: 400.132	F2: 1.000	SW1: 8224		OF1: 2467.8		PTS1d: 65536	
EX: zg30		PW: 15.0 usec	PD: 1.0 sec	NA: 8	LB: 0.0		Nuts - \$pdata

AZD-8055 HPLC Analysis

Sample Name : 1009298-09-2
Analysis Method : D:\METHODS\2-POS-15MIN.M
Sample Info : Easy-Access Method: '2-POS-15MIN'
Method Info : Mobile Phase : A:water(0.01%TFA) B:ACN(0.01%TFA)
GGradient
Time 0 7.5 15
B % 5 95 100
Flow Rate :1ml/min
Column :SUNFIRE, 150*4.6mm,3.5um

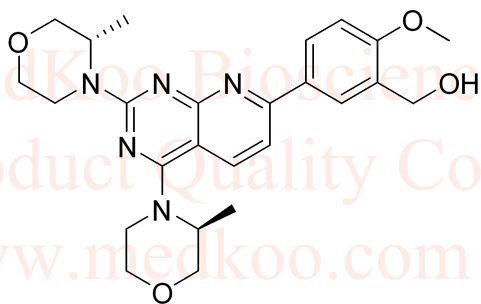


Integration Results for DAD1 A, Sig=214,4 Ref=off

RetTim	Width	Area	Height	Area%
5.04	0.03	2243.78	1231.68	100.00

Integration Results for DAD1 B, Sig=254,4 Ref=off

RetTim	Width	Area	Height	Area%
5.04	0.03	1756.58	1016.24	100.00



Cat#: 200312
Name: AZD-8055
CAS#: 1009298-09-2
Lot#: A8T12K21
Chemical Formula: C₂₅H₃₁N₅O₄
Exact Mass: 465.2376
Molecular Weight: 465.54

AZD-8055 LCMS Analysis

Sample Name : 1009298-09-2
Analysis Method : D:\METHODS\1-POS-3MIN.M
Sample Info : Easy-Access Method: '1-POS-3MIN'
Method Info : Mobile Phase : A:water(0.01%TFA) B:ACN(0.01%TFA)
Gradient:5%B for 0.2min,increase to 95%B within 1.5min,95%B for 1.5min,back to 5% within 0.01min
Flow Rate :2ml/min
Column :Sunfire, 50*4.6mm,3.5um
Column Temperature:50C

MedKoo Cat#: 200312

Name: AZD-8055

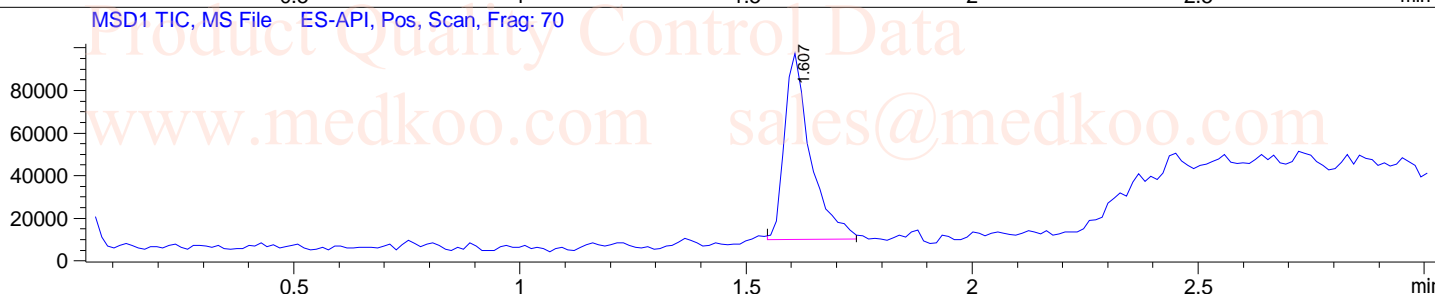
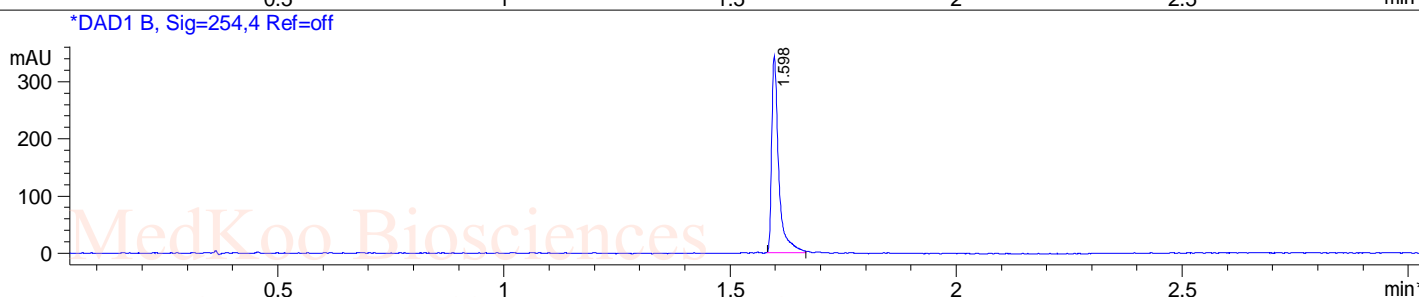
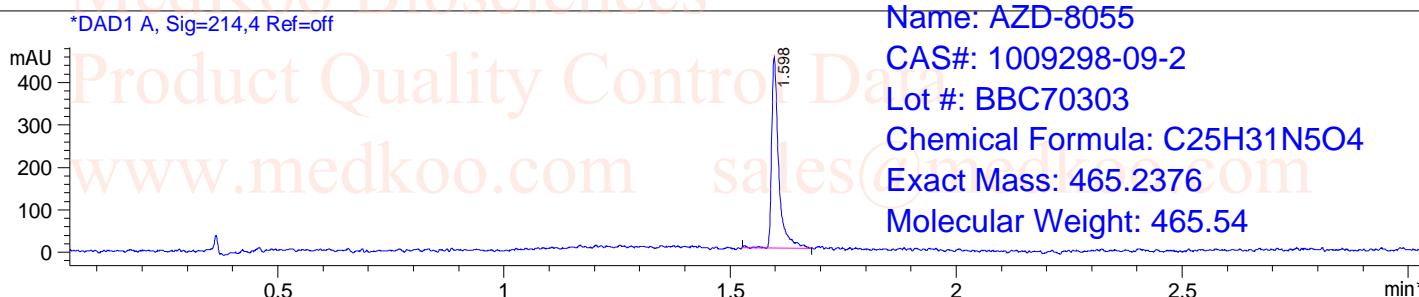
CAS#: 1009298-09-2

Lot #: BBC70303

Chemical Formula: C₂₅H₃₁N₅O₄

Exact Mass: 466.2376

Molecular Weight: 465.54



Ret. Time: 1.61

<<<< POSITIVE SPECTRA >>>>

