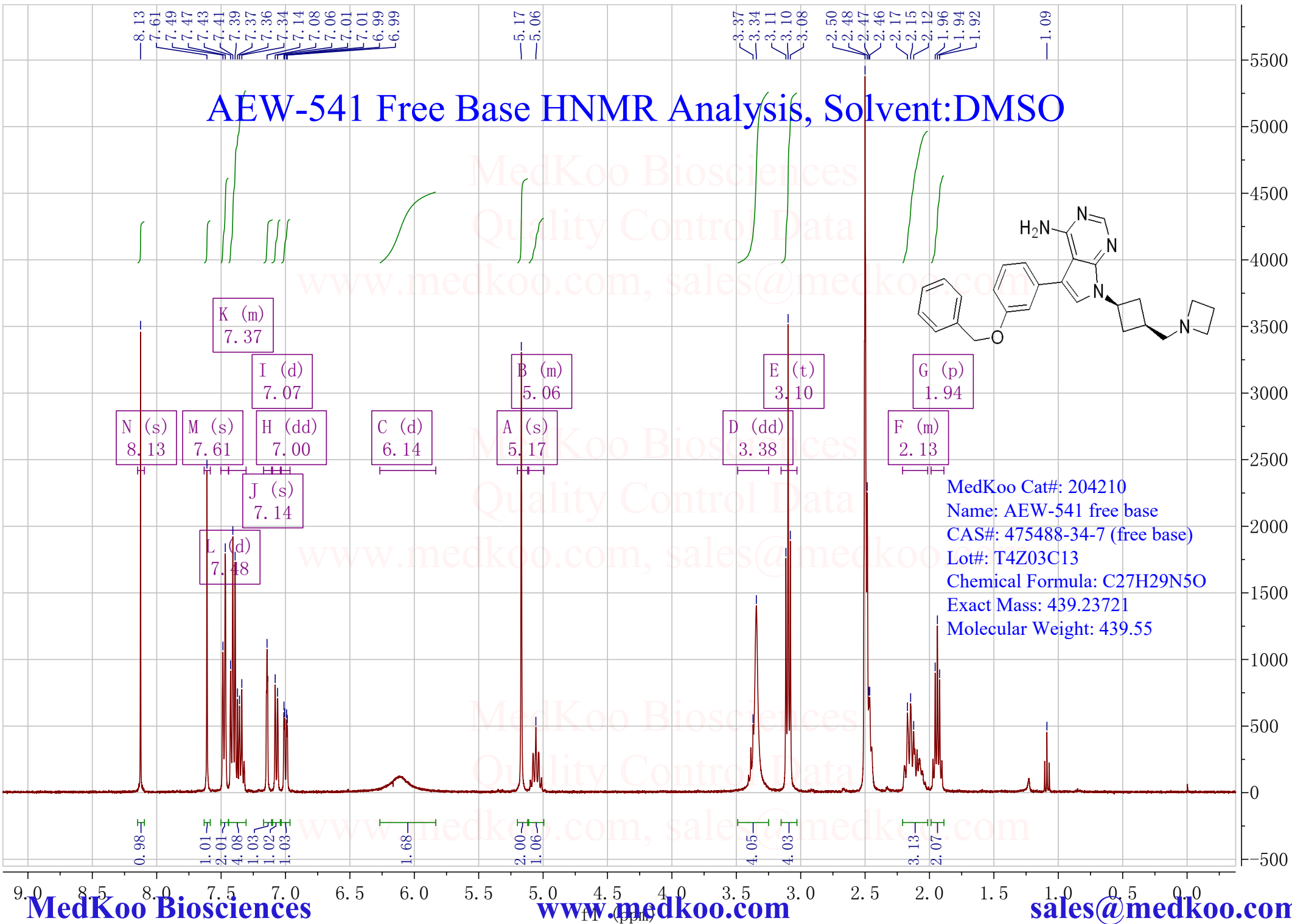


AEW-541 Free Base HNMR Analysis, Solvent:DMSO



N (s) 8.13
M (s) 7.61
H (dd) 7.00
J (s) 7.14
L (d) 7.48
K (m) 7.37
I (d) 7.07

C (d) 6.14

A (s) 5.17
B (m) 5.06

D (dd) 3.38
E (t) 3.10

F (m) 2.13
G (p) 1.94

MedKoo Cat#: 204210
Name: AEW-541 free base
CAS#: 475488-34-7 (free base)
Lot#: T4Z03C13
Chemical Formula: C₂₇H₂₉N₅O
Exact Mass: 439.23721
Molecular Weight: 439.55

8.13
7.61
7.49
7.47
7.43
7.41
7.39
7.37
7.36
7.34
7.14
7.08
7.06
7.01
7.01
6.99
6.99

5.17
5.06

3.37
3.34
3.11
3.10
3.08
2.50
2.48
2.47
2.46
2.17
2.15
2.12
1.96
1.94
1.92

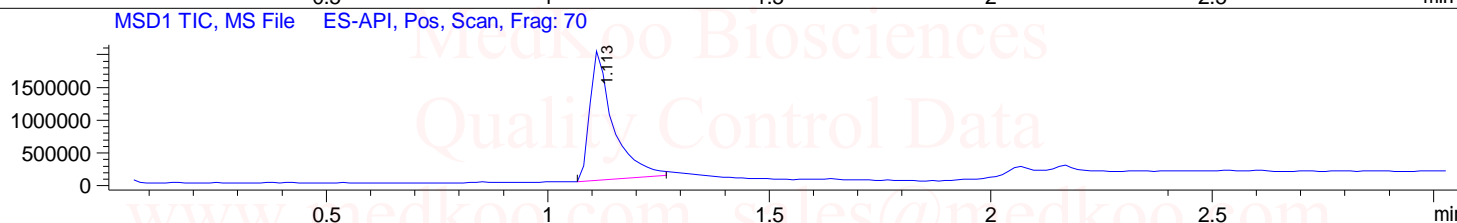
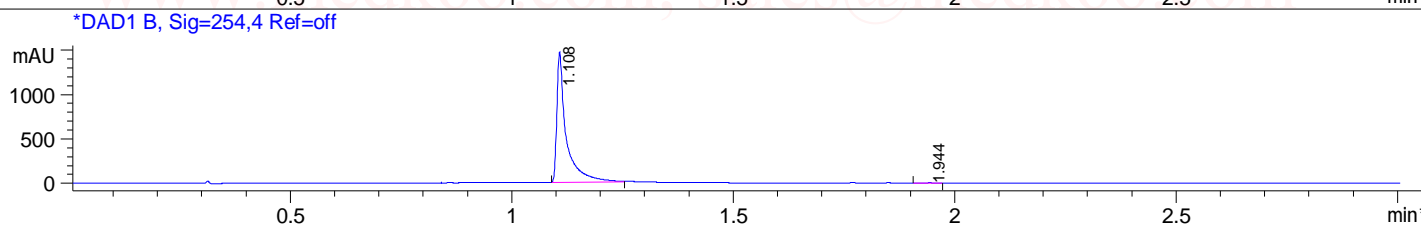
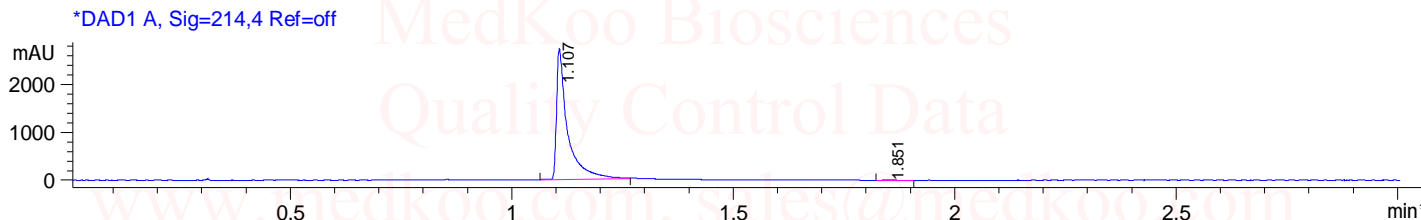
1.09

0.98
1.01
2.01
4.08
1.03
1.02
1.03
1.68
2.00
1.06
4.05
4.03
3.13
2.07

AEW-541 Free Base LC/MS Analysis Report

Sample Name : CHP10003-A **Tgt Mass(EZX)** :
Acq. Operator : A01-Monitor **Location** : P2-A-03
Spec. Reported : MS Integration **Inj** : 1
Acq. Method : D:\METHODS\1-POS-MON.M **Inj Volume** : 1 ul

Analysis Method : D:\METHODS\1-POS-MON.M
Sample Info : Easy-Access Method: '1-POS-MON'
Method Info : Mobile Phase: A: water(0.01%TFA) B: ACN(0.01%TFA)
Gradient: 5%-95% B in 1.3min
Flow Rate: 2ml/min
Column: Sunfire C18, 4.6*50mm,3.5um
Oven Temperature: 50 C
MS" ESI-POS Mass 103-1000



Integration Results for DAD1 A, Sig=214,4 Ref=off

RetTim	Width	Area	Height	Area%
1.11	0.02	4746.90	2734.92	99.56
1.85	0.03	21.02	10.83	0.44

MedKoo Cat#: 204210

Name: AEW-541 free base

CAS#: 475488-34-7 (free base)

Lot#: T4Z03C13

Chemical Formula: C27H29N5O

Exact Mass: 439.23721

Molecular Weight: 439.55

Integration Results for DAD1 B, Sig=254,4 Ref=off

RetTim	Width	Area	Height	Area%
1.11	0.02	2165.52	1470.02	99.67
1.94	0.02	7.07	5.08	0.33

Ret. Time: 1.11

<<<< POSITIVE SPECTRA >>>>

