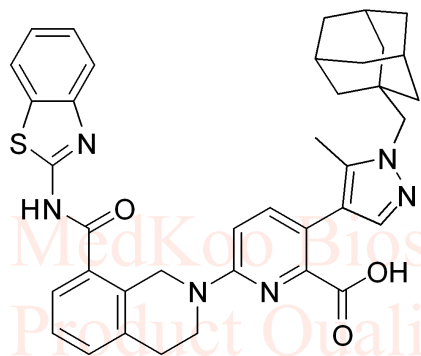


A-1331852 HNMR Analysis, solvent = DMSO-d6



MedKoo Cat#: 406841

Name: A-1331852

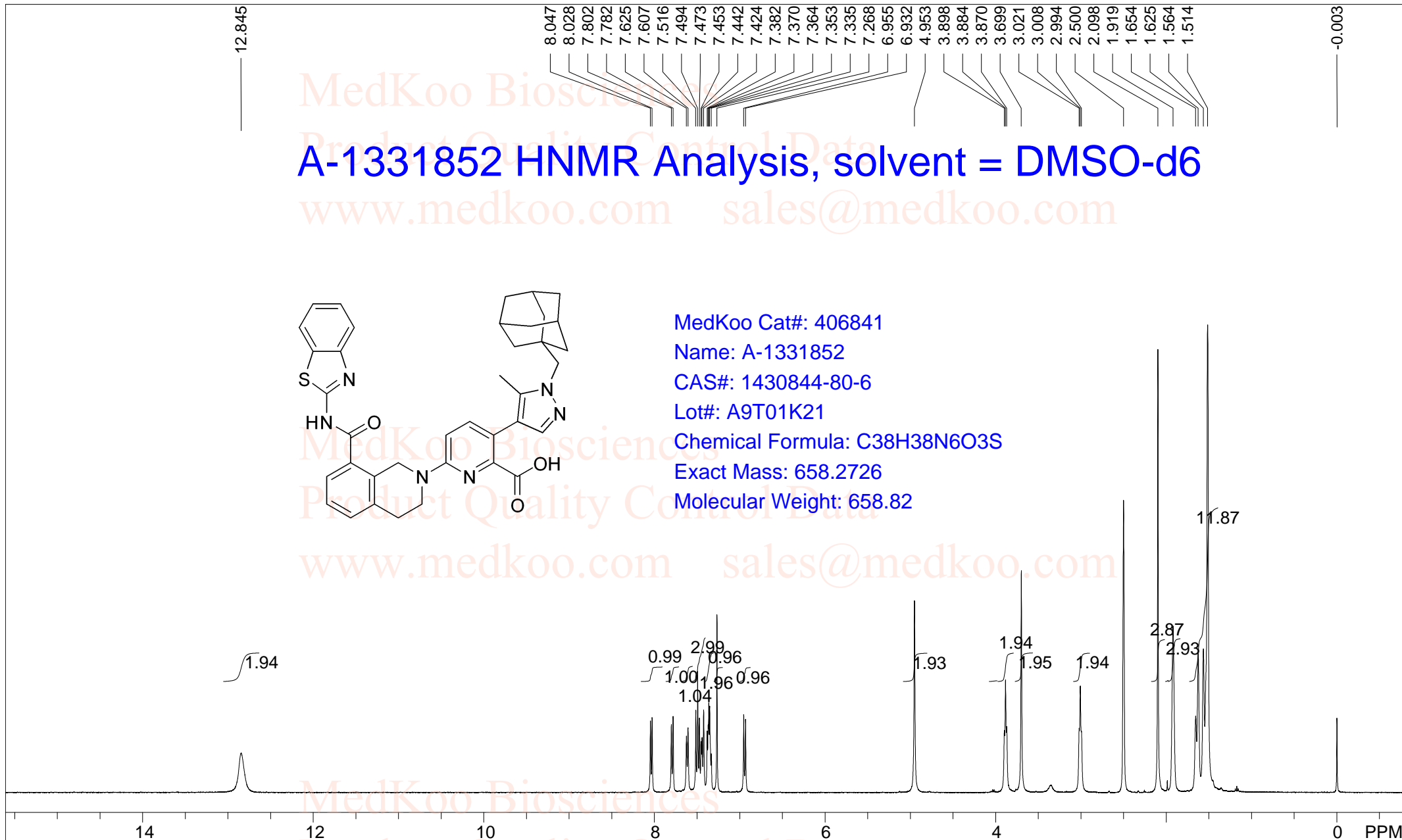
CAS#: 1430844-80-6

Lot#: A9T01K21

Chemical Formula: C38H38N6O3S

Exact Mass: 658.2726

Molecular Weight: 658.82

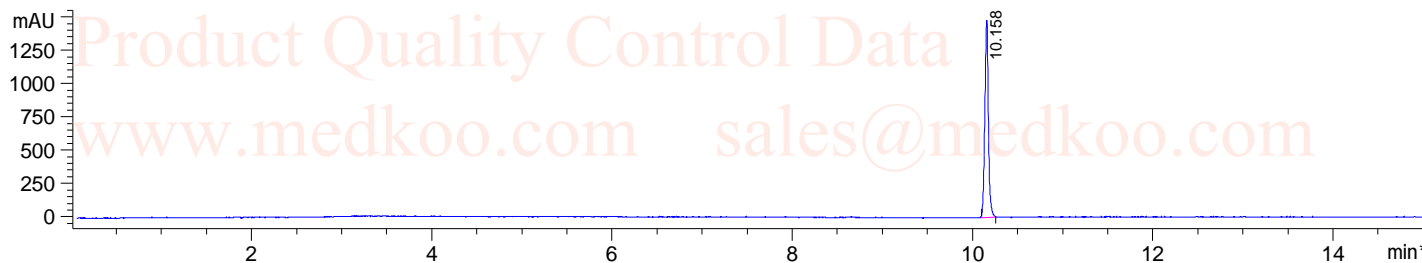


DMSO,							
F1: 400.132	F2: 1.000	SW1: 8224		OF1: 2468.3		PTS1d: 32768	
EX: zg30		PW: 13.0 usec	PD: 1.0 sec	NA: 8	LB: 0.0		Nuts - \$pdata

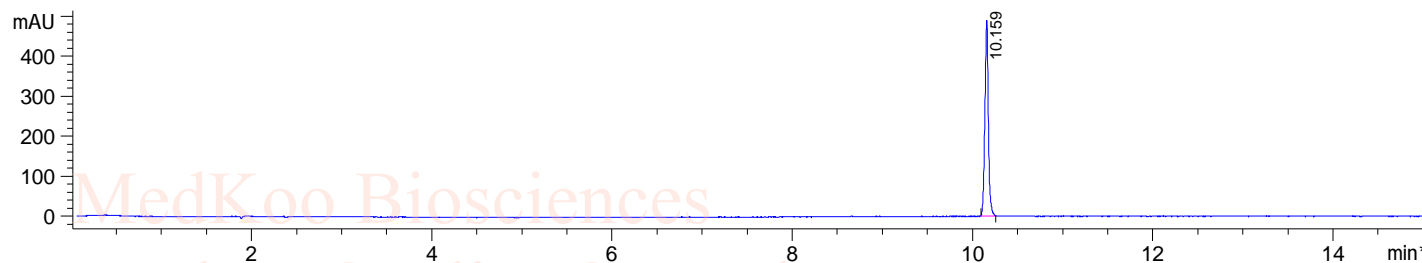
A-1331852 HPLC Analysis

Sample Name : 140844-80-6
Acq. Method : D:\METHODS\2-POS-15MIN.M
Analysis Method : D:\METHODS\2-POS-15MIN.M
Sample Info : Easy-Access Method: '2-POS-15MIN'
Method Info : Mobile Phase : A:water(0.01%TFA) B:ACN(0.01%TFA)
GGradient
Time 0 7.5 15
B % 5 95 95
Flow Rate :1ml/min
Column :SUNFIRE, 150*4.6mm,3.5um

*DAD1 A, Sig=214,4 Ref=off



*DAD1 B, Sig=254,4 Ref=off

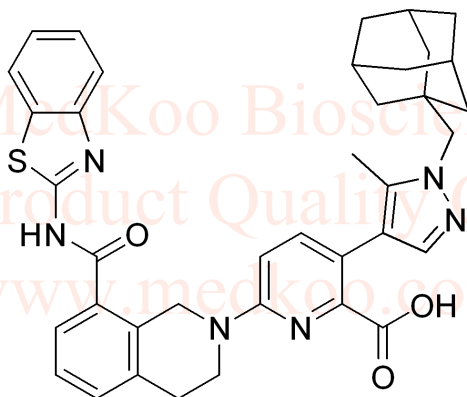


Integration Results for DAD1 A, Sig=214,4 Ref=off

RetTim	Width	Area	Height	Area%
10.16	0.04	4049.84	1479.72	100.00

Integration Results for DAD1 B, Sig=254,4 Ref=off

RetTim	Width	Area	Height	Area%
10.16	0.04	1302.86	490.19	100.00



MedKoo Cat#: 406841

Name: A-1331852

CAS#: 1430844-80-6

Lot#: A9T01K21

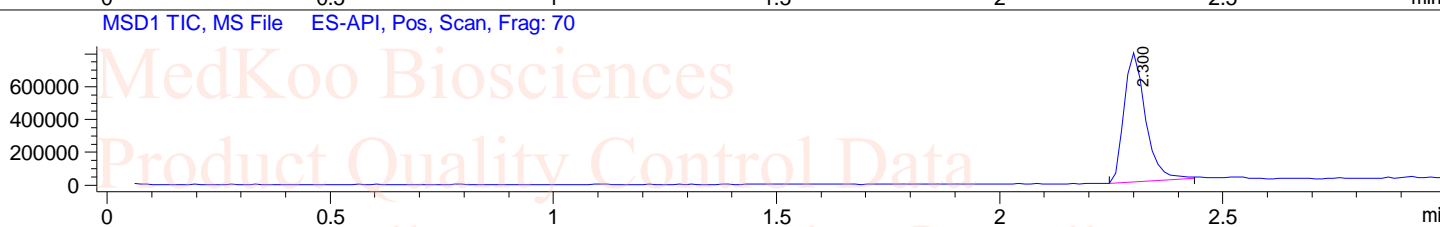
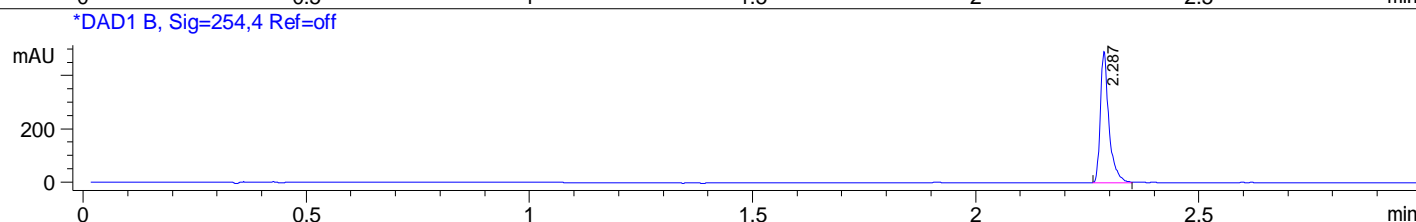
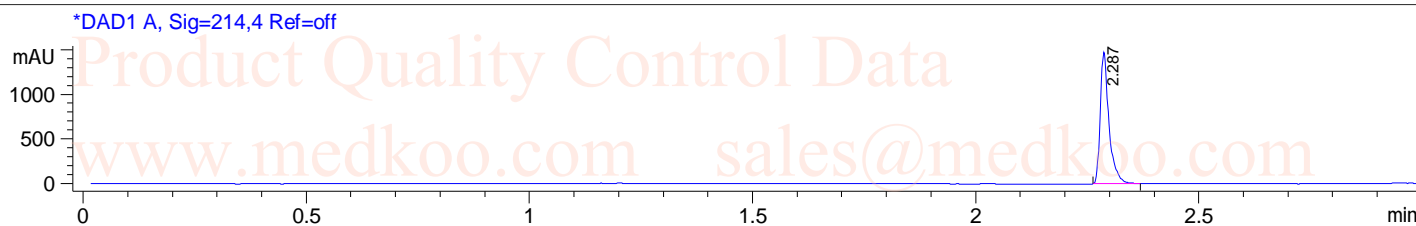
Chemical Formula: C₃₈H₃₈N₆O₃S

Exact Mass: 658.2726

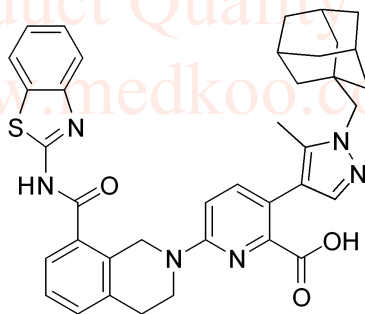
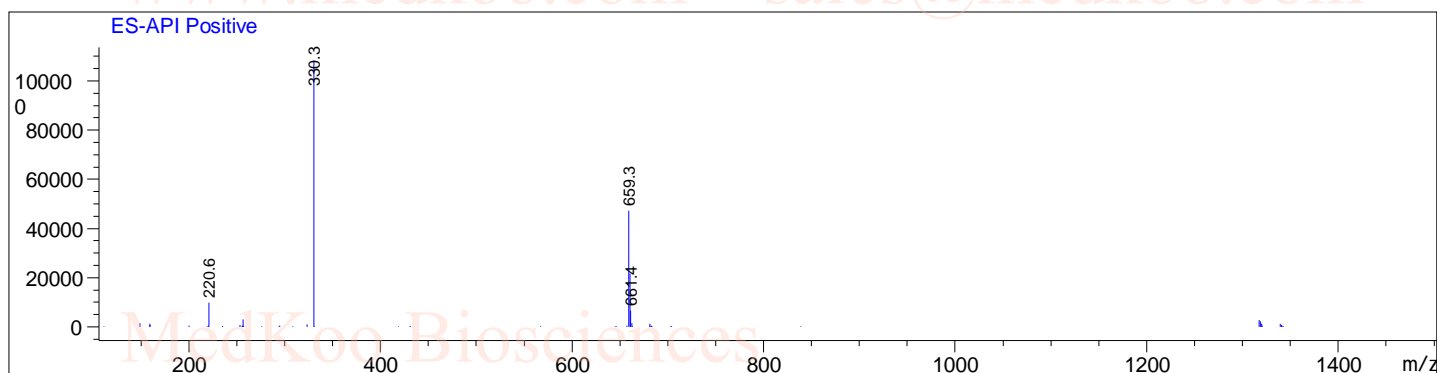
Molecular Weight: 658.82

A-1331852 LC/MS Analysis

Sample Name : 1430844-80-6
Acq. Method : D:\METHODS\1-POS-3MIN.M
Analysis Method : D:\METHODS\1-POS-3MIN.M
Sample Info : Easy-Access Method: '1-POS-3MIN'
Method Info : Mobile Phase : A:water(0.01%TFA) B:ACN(0.01%TFA)
Gradient:5%B for 0.2min,increase to 95%B within 1.5min,95%B for 1.5min,back within 0.01min
Flow Rate :2ml/min
Column :Sunfire, 50*4.6mm,3.5um
Column Temperature:50C



Ret. Time: 2.30 <<<< POSITIVE SPECTRA



MedKoo Cat#: 406841

Name: A-1331852

CAS#: 1430844-80-6

Lot#: A9T01K21

Chemical Formula: C₃₈H₃₈N₆O₃S

Exact Mass: 658.2726

Molecular Weight: 658.82